

CDC20 Antibody

Rabbit Polyclonal

Antigen Affinity Purified	RefSeq ID	NP_001246.2
Catalog No. A301-180A	Uniprot ID	Q12834
Lot No. 3	GenID	991

APPLICATIONS	WB, IP, IHC
SPECIES REACTIVITY	Human, Mouse
PRESUMED REACTIVITY	Based on 100% sequence identity, this antibody is predicted to react with Pig
AMOUNT	100 µl
CONCENTRATION	1000 µg/ml
STORAGE/SHELF LIFE	2 – 8°C / 1 year from date of receipt
PHYSICAL STATE	Liquid
BUFFER	Tris-citrate/phosphate buffer, pH 7 to 8 containing 0.09% Sodium Azide
ISOTYPE	IgG
ORIGIN	USA
PRODUCTION PROCEDURES	Antibody was affinity purified using an epitope specific to CDC20 immobilized on solid support.

The epitope recognized by A301-180A maps to a region between residue 449 and 499 of human cell division cycle 20 using the numbering given in entry NP_001246.2 (GenID 991).

Immunoglobulin concentration was determined using Beer's Law where 1mg/mL IgG has an A280 of 1.4.

APPLICATIONS Centrifuge tube to remove product from lid. Optimal working dilutions should be determined experimentally by the investigator. Prepare working dilution immediately before use.

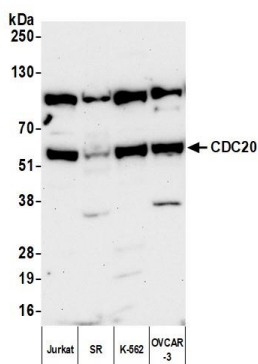
Western Blot	1:2000 – 1:10,000
Immunoprecipitation	6 µg/mg lysate
Immunohistochemistry	1:500 – 1:2000. Epitope retrieval with citrate buffer pH 6.0 is recommended for FFPE tissue sections.

IHC HUMAN CONTROLS Breast Carcinoma, Prostate Carcinoma

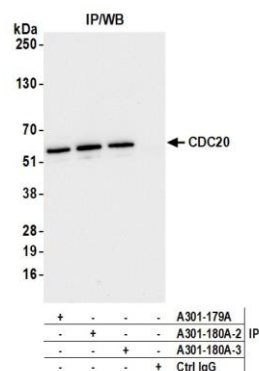
IHC MOUSE CONTROLS Plasmacytoma, Teratoma

ADDITIONAL INFO <https://www.fortislife.com/p/A301-180A>
Use the link above to view SDS, a current list of citations, and other product specific information.

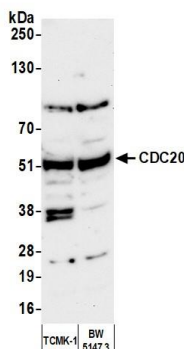
This document certifies that this product has met all of the quality control standards defined by Bethyl Laboratories, Inc.
Michael Spencer, PhD Date: February 27, 2024



Detection of human CDC20 by western blot. *Samples:* Whole cell lysate (50 µg) from Jurkat, SR, K-562, and OVCAR-3 cells prepared using NETN lysis buffer. *Antibody:* Affinity purified rabbit anti-CDC20 antibody (A301-180A lot 3) used for WB at 0.2 µg/ml. *Detection:* Chemiluminescence with an exposure time of 3 minutes.



Detection of human CDC20 by western blot of immunoprecipitates. *Samples:* Whole cell lysate (1 mg per IP; 10% of IP loaded) from K-562 cells prepared using NETN lysis buffer. *Antibody:* Affinity purified rabbit anti-CDC20 antibody (A301-180A lot 3) used for IP at 6 µg per reaction. CDC20 was also immunoprecipitated by a previous lot of this antibody (A301-180A lot 2) and a second antibody against a different epitope of CDC20 (A301-179A). For blotting immunoprecipitated CDC20, A301-180A was used at 0.2 µg/ml. *Detection:* Chemiluminescence with an exposure time of 30 seconds.



Detection of mouse CDC20 by western blot. *Samples:* Whole cell lysate (50 µg) from TCMK-1 and BW5147.3 cells prepared using NETN lysis buffer. *Antibody:* Affinity purified rabbit anti-CDC20 antibody (A301-180A lot 3) used for WB at 0.2 µg/ml. *Detection:* Chemiluminescence with an exposure time of 3 minutes.