

CDC20 Antibody

Rabbit Polyclonal

Antigen Affinity Purified

Protein ID NP_001246.2

Catalog No. A301-179A

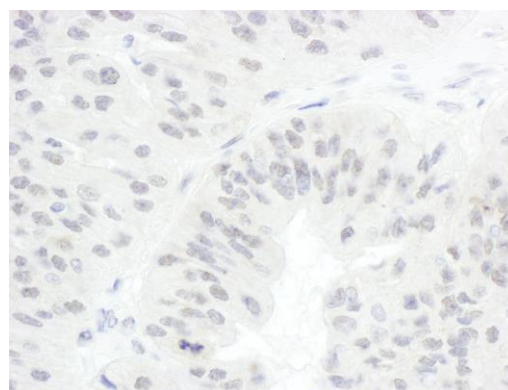
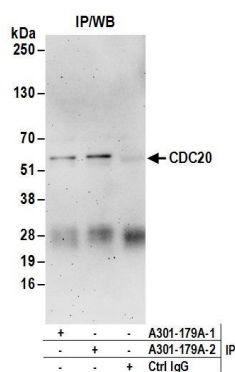
GeneID 991

Lot No. A301-179A-2



APPLICATIONS	IP, IHC
SPECIES REACTIVITY	Human
PRESUMED REACTIVITY	Based on 100% sequence identity, this antibody is predicted to react with Pig
AMOUNT	100 µl
CONCENTRATION	1000 µg/ml
STORAGE/SHELF LIFE	2 - 8° C / 1 year from date of receipt
PHYSICAL STATE	Liquid
BUFFER	Tris-citrate/phosphate buffer, pH 7 to 8 containing 0.09% Sodium Azide
ISOTYPE	IgG
ORIGIN	USA
PRODUCTION PROCEDURES	<p>Antibody was affinity purified using an epitope specific to CDC20 immobilized on solid support.</p> <p>The epitope recognized by A301-179A maps to a region between residue 50 and 100 of human cell division cycle 20 using the numbering given in entry NP_001246.2 (GeneID 991).</p> <p>Immunoglobulin concentration was determined by extinction coefficient: absorbance at 280 nm of 1.4 equals 1.0 mg of IgG.</p>
APPLICATIONS	<p>Centrifuge tube to remove product from lid. Optimal working dilutions should be determined experimentally by the investigator. Prepare working dilution immediately before use.</p> <p>Western Blot Not recommended. Use rabbit anti-CDC20 antibody A301-180A.</p> <p>Immunoprecipitation 2 - 10 µg/mg lysate</p> <p>Immunohistochemistry 1:200 - 1:1,000. Epitope retrieval with Tris-EDTA pH 9.0 is recommended for FFPE tissue sections.</p>
APPLICATION NOTES	Western blot of immunoprecipitates performed using Normal Pig Serum (Cat. No. S100-020), Goat anti-Rabbit Light Chain HRP Conjugate (Cat. No. A120-113P) and 4-20% SDS-PAGE (link to IP-western blot protocol in Additional Info section below).
IHC HUMAN CONTROLS	Ovarian Carcinoma, Prostate Carcinoma, Testicular Seminoma
ADDITIONAL INFO	<p>https://www.bethyl.com/product/A301-179A</p> <p>Use the link above to view SDS, a current list of citations, and other product specific information.</p> <p>IP-western blot protocol: https://www.bethyl.com/content/protocol_IP_WB</p>

This document certifies that this product has met all of the quality control standards defined by Bethyl Laboratories, Inc.
Eric McIntush, PhD | Chief Scientific Officer Date: June 21, 2019



Detection of human CDC20 by western blot of immunoprecipitates. *Samples:* Whole cell lysate (1 mg for IP; 20% of IP loaded) from HeLa cells. *Antibodies:* Affinity purified rabbit anti-CDC20 antibody A301-179A (lot A301-179A-2) used for IP at 6 µg/mg lysate. CDC20 was also immunoprecipitated by a previous lot (lot A301-179A-1) of this antibody. For blotting immunoprecipitated CDC20, A301-179A was used at 1 µg/ml. *Detection:* Chemiluminescence with an exposure time of 3 minutes.

Detection of human CDC20 by immunohistochemistry. *Sample:* FFPE section of human ovarian carcinoma. *Antibody:* Affinity purified rabbit anti-CDC20 (Cat. No. A301-179A Lot2) used at a dilution of 1:500 (2µg/ml). *Detection:* DAB.