

CTDP1 /FCP1 Antibody

Rabbit Polyclonal

Antigen Affinity Purified

Protein ID NP_004706.3

Catalog No. A301-172A

GeneID 9150

Lot No. A301-172A-1



APPLICATIONS	WB, IP
SPECIES REACTIVITY	Human, Mouse
AMOUNT	100 µl
CONCENTRATION	200 µg/ml
STORAGE/SHELF LIFE	2 - 8° C / 1 year from date of receipt
PHYSICAL STATE	Liquid
BUFFER	Tris-buffered Saline containing 0.1% BSA and 0.09% Sodium Azide
ISOTYPE	IgG
ORIGIN	USA
PRODUCTION PROCEDURES	Antibody was affinity purified using an epitope specific to CTDP1 /FCP1 immobilized on solid support.

The epitope recognized by A301-172A maps to a region between residue 911 and 961 of human CTD (carboxy-terminal domain, RNA polymerase II, polypeptide A) phosphatase, subunit 1 (TFIIF-associated CTD phosphatase 1) using the numbering given in entry NP_004706.3 (GeneID 9150).

Immunoglobulin concentration was determined by extinction coefficient: absorbance at 280 nm of 1.4 equals 1.0 mg of IgG.

APPLICATIONS Centrifuge tube to remove product from lid. Optimal working dilutions should be determined experimentally by the investigator. Prepare working dilution immediately before use.

Western Blot 1:2,000 - 1:10,000

Immunoprecipitation 2 - 5 µg/mg lysate

APPLICATION NOTES Western blot of immunoprecipitates performed using Normal Pig Serum (Cat. No. S100-020), Goat anti-Rabbit Light Chain HRP Conjugate (Cat. No. A120-113P) and 4-8% SDS-PAGE (link to IP-western blot protocol in Additional Info section below).

Western blot of lysates performed using standard western blot reagents and 4-8% SDS-PAGE.

ADDITIONAL INFO <https://www.bethyl.com/product/A301-172A>

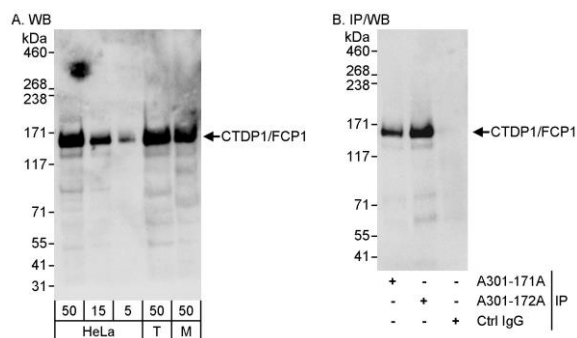
Use the link above to view SDS, a current list of citations, and other product specific information.

IP-western blot protocol: https://www.bethyl.com/content/protocol_IP_WB

This document certifies that this product has met all of the quality control standards defined by Bethyl Laboratories, Inc.

Eric McIntush, PhD | Chief Scientific Officer

Date: June 21, 2019



Detection of human and mouse CTD1/FCP1 by western blot (h&m) and immunoprecipitation (h). *Samples:* Whole cell lysate from HeLa (5, 15, and 50 μ g for WB; 1 mg for IP, 20% of IP loaded), HEK293T (T; 50 μ g), and mouse NIH 3T3 (M; 50 μ g) cells. *Antibodies:* Affinity purified rabbit anti-CTD1/FCP1 antibody A301-172A used for WB at 0.04 μ g/ml (A) and 1.0 μ g/ml (B) and used for IP at 3 μ g/mg lysate. CTD1/FCP1 was also immunoprecipitated by rabbit anti-CTD1/FCP1 antibody A301-171A, which recognizes an upstream epitope. *Detection:* Chemiluminescence with exposure times of 10 seconds (A) and 3 seconds (B).