

# CTDP1 /FCP1 Antibody

Rabbit Polyclonal

Antigen Affinity Purified

Protein ID NP\_004706.3

Catalog No. A301-171A

GeneID 9150

Lot No. A301-171A-1



<b>APPLICATIONS</b>	IP
<b>SPECIES REACTIVITY</b>	Human
<b>AMOUNT</b>	100 µl
<b>CONCENTRATION</b>	1000 µg/ml
<b>STORAGE/SHELF LIFE</b>	2 - 8° C / 1 year from date of receipt
<b>PHYSICAL STATE</b>	Liquid
<b>BUFFER</b>	Tris-citrate/phosphate buffer, pH 7 to 8 containing 0.09% Sodium Azide
<b>ISOTYPE</b>	IgG
<b>ORIGIN</b>	USA
<b>PRODUCTION PROCEDURES</b>	Antibody was affinity purified using an epitope specific to CTDP1 /FCP1 immobilized on solid support.

The epitope recognized by A301-171A maps to a region between residue 500 and 550 of human CTD (carboxy-terminal domain, RNA polymerase II, polypeptide A) phosphatase, subunit 1 (TFIIF-associated CTD phosphatase 1) using the numbering given in entry NP\_004706.3 (GeneID 9150).

Immunoglobulin concentration was determined by extinction coefficient: absorbance at 280 nm of 1.4 equals 1.0 mg of IgG.

**APPLICATIONS** Centrifuge tube to remove product from lid. Optimal working dilutions should be determined experimentally by the investigator. Prepare working dilution immediately before use.

Western Blot Not recommended. Use rabbit anti-CTDP1 /FCP1 antibody A301-172A.

Immunoprecipitation 2 - 5 µg/mg lysate

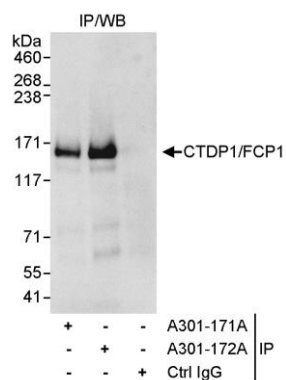
**APPLICATION NOTES** Western blot of immunoprecipitates performed using Normal Pig Serum (Cat. No. S100-020), Goat anti-Rabbit Light Chain HRP Conjugate (Cat. No. A120-113P) and 4-8% SDS-PAGE (link to IP-western blot protocol in Additional Info section below).

**ADDITIONAL INFO** <https://www.bethyl.com/product/A301-171A>

Use the link above to view SDS, a current list of citations, and other product specific information.

IP-western blot protocol: [https://www.bethyl.com/content/protocol\\_IP\\_WB](https://www.bethyl.com/content/protocol_IP_WB)

This document certifies that this product has met all of the quality control standards defined by Bethyl Laboratories, Inc.  
Eric McIntush, PhD | Chief Scientific Officer Date: June 21, 2019



**Detection of human CTDP1/FCP1 by western blot of immunoprecipitates.** *Samples:* Whole cell lysate (1 mg for IP, 20% of IP loaded) from HeLa cells. *Antibodies:* Affinity purified rabbit anti-CTDP1/FCP1 antibody A301-171A used for IP at 3 µg/mg lysate. CTDP1/FCP1 was also immunoprecipitated by rabbit anti-CTDP1/FCP1 antibody A301-172A, which recognizes a downstream epitope. For blotting immunoprecipitated CTDP1/FCP1, A301-172A was used at 1.0 µg/ml. *Detection:* Chemiluminescence with an exposure time of 3 seconds.