

PML Antibody

Rabbit Polyclonal

Antigen Affinity Purified

Protein ID NP_150241.2

Catalog No. A301-167A

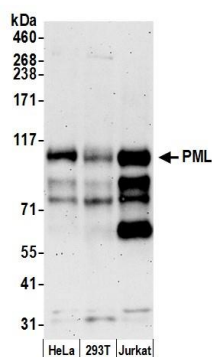
GeneID 5371

Lot No. A301-167A-3

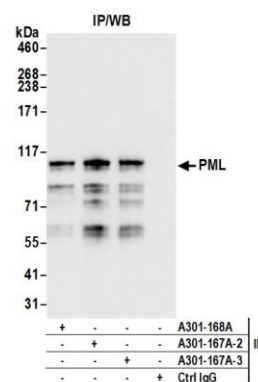


| | |
|------------------------------|--|
| APPLICATIONS | WB, IP, IHC |
| SPECIES REACTIVITY | Human |
| AMOUNT | 100 µl |
| CONCENTRATION | 200 µg/ml |
| STORAGE/SHELF LIFE | 2 – 8° C / 1 year from date of receipt |
| PHYSICAL STATE | Liquid |
| BUFFER | Tris-buffered Saline containing 0.1% BSA and 0.09% Sodium Azide |
| ISOTYPE | IgG |
| ORIGIN | USA |
| PRODUCTION PROCEDURES | <p>Antibody was affinity purified using an epitope specific to PML immobilized on solid support.</p> <p>The epitope recognized by A301-167A maps to a region between residue 375 and 425 of promyelocytic leukemia using the numbering given in entry NP_150241.2 (GeneID 5371).</p> <p>Immunoglobulin concentration was determined by extinction coefficient: absorbance at 280 nm of 1.4 equals 1.0 mg of IgG.</p> |
| APPLICATIONS | <p>Centrifuge tube to remove product from lid. Optimal working dilutions should be determined experimentally by the investigator. Prepare working dilution immediately before use.</p> <p>Western Blot 1:2,000 – 1:10,000</p> <p>Immunoprecipitation 2 – 10 µg/mg lysate</p> <p>Immunohistochemistry 1:500 to 1:2,000. Epitope retrieval with citrate buffer pH6.0 is recommended for FFPE tissue sections.</p> |
| APPLICATION NOTES | <p>Western blot of immunoprecipitates performed using Normal Pig Serum (Cat. No. S100-020), Goat anti-Rabbit Light Chain HRP Conjugate (Cat. No. A120-113P) and 4-8% SDS-PAGE (link to IP-western blot protocol in Additional Info section below).</p> <p>Western blot of lysates performed using standard western blot reagents and 4-8% SDS-PAGE.</p> |
| IHC HUMAN CONTROLS | Breast Carcinoma, Colon Carcinoma, Ovarian Carcinoma, Prostate Carcinoma |
| ADDITIONAL INFO | <p>https://www.bethyl.com/product/A301-167A</p> <p>Use the link above to view SDS, a current list of citations, and other product specific information.</p> <p>IP-western blot protocol: https://www.bethyl.com/content/protocol_IP_WB</p> |

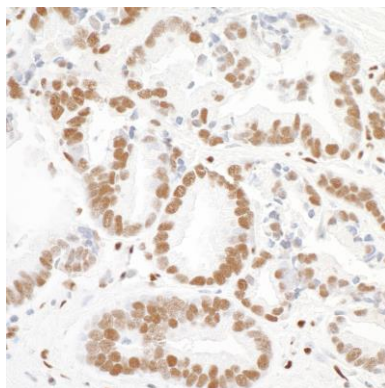
This document certifies that this product has met all of the quality control standards defined by Bethyl Laboratories, Inc.
Eric McIntush, PhD | Chief Scientific Officer Date: June 21, 2019



Detection of human PML by western blot. *Samples:* Whole cell lysate (50 µg) from HeLa, 293T, and Jurkat cells prepared using NETN lysis buffer. *Antibody:* Affinity purified rabbit anti-PML antibody A301-167A (lot A301-167A-3) used for WB at 0.04 µg/ml. *Detection:* Chemiluminescence with an exposure time of 3 minutes.



Detection of human PML by western blot of immunoprecipitates. *Samples:* Whole cell lysate (1.0 mg per IP reaction; 20% of IP loaded) from Jurkat cells prepared using NETN lysis buffer. *Antibodies:* Affinity purified rabbit anti-PML antibody A301-167A (lot A301-167A-3) used for IP at 6 µg per reaction. PML was also immunoprecipitated by a previous lot of this antibody (lot A301-167A-2) and rabbit anti-PML antibody A301-168A. For blotting immunoprecipitated PML, A301-167A was used at 0.2 µg/ml. *Detection:* Chemiluminescence with an exposure time of 1 second.



Detection of human PML by immunohistochemistry.

Sample: FFPE section of human prostate carcinoma.

Antibody: Affinity purified rabbit anti-PML (Cat. No. A301-167A Lot3) used at a dilution of 1:1,000 (0.2 µg/ml).

Detection: DAB