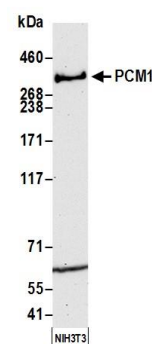
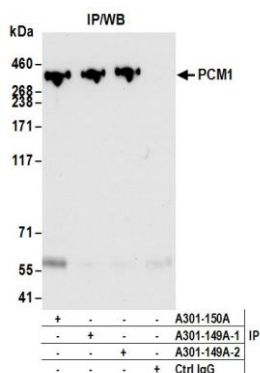


Detection of human PCM1 by western blot. Samples: Whole cell lysate (50 µg) from HEK293T, A-549, and K-562 cells prepared using NETN lysis buffer. **Antibody:** Affinity purified rabbit anti-PCM1 antibody A301-149A (lot A301-149A-2) used for WB at 0.1 µg/ml. **Detection:** Chemiluminescence with an exposure time of 75 seconds.



Detection of mouse PCM1 by western blot. Samples: Whole cell lysate (50 µg) from NIH 3T3 cells prepared using NETN lysis buffer. **Antibody:** Affinity purified rabbit anti-PCM1 antibody A301-149A (lot A301-149A-2) used for WB at 0.1 µg/ml. **Detection:** Chemiluminescence with an exposure time of 3 minutes.



Detection of human PCM1 by western blot of immunoprecipitates. Samples: Whole cell lysate (1.0 mg per IP reaction; 20% of IP loaded) from HEK293T cells prepared using NETN lysis buffer. **Antibodies:** Affinity purified rabbit anti-PCM1 antibody A301-149A (lot A301-149A-2) used for IP at 6 µg per reaction. PCM1 was also immunoprecipitated by a previous lot of this antibody (lot A301-149A-1) and rabbit anti-PCM1 antibody A301-150A. For blotting immunoprecipitated PCM1, A301-149A was used at 0.1 µg/ml. **Detection:** Chemiluminescence with an exposure time of 10 seconds.