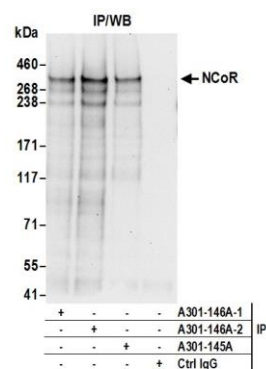


Detection of human NCoR by western blot. *Samples:* Whole cell lysate (5, 15 and 50 μ g) from HeLa cells prepared using NETN lysis buffer. *Antibody:* Affinity purified rabbit anti-NCoR antibody A301-146A (lot A301-146A-2) used for WB at 0.1 μ g/ml. *Detection:* Chemiluminescence with an exposure time of 30 seconds.



Detection of human NCoR by western blot of immunoprecipitates. *Samples:* Whole cell lysate (0.5 or 1.0 mg per IP reaction; 20% of IP loaded) from HeLa cells prepared using NETN lysis buffer. *Antibodies:* Affinity purified rabbit anti-NCoR antibody A301-146A (lot A301-146A-2) used for IP at 6 μ g per reaction. NCoR was also immunoprecipitated by a previous lot of this antibody (lot A301-146A-1) and rabbit anti-NCoR antibody A301-145A. For blotting immunoprecipitated NCoR, A301-146A was used at 1 μ g/ml. *Detection:* Chemiluminescence with an exposure time of 30 seconds.