

# Filamin A Antibody

Rabbit Polyclonal

Antigen Affinity Purified

Protein ID NP\_001447.1

Catalog No. A301-135A

GeneID 2316

Lot No. A301-135A-1



<b>APPLICATIONS</b>	WB, IP, IHC
<b>SPECIES REACTIVITY</b>	Human, Mouse
<b>AMOUNT</b>	100 µl
<b>CONCENTRATION</b>	200 µg/ml
<b>STORAGE/SHELF LIFE</b>	2 – 8° C / 1 year from date of receipt
<b>PHYSICAL STATE</b>	Liquid
<b>BUFFER</b>	Tris-buffered Saline containing 0.1% BSA and 0.09% Sodium Azide
<b>ISOTYPE</b>	IgG
<b>ORIGIN</b>	USA
<b>PRODUCTION PROCEDURES</b>	Antibody was affinity purified using an epitope specific to Filamin A immobilized on solid support.

The epitope recognized by A301-135A maps to a region between residue 2597 and 2647 of human Filamin A using the numbering given in entry NP\_001447.1 (GeneID 2316).

Immunoglobulin concentration was determined by extinction coefficient: absorbance at 280 nm of 1.4 equals 1.0 mg of IgG.

**APPLICATIONS** Centrifuge tube to remove product from lid. Optimal working dilutions should be determined experimentally by the investigator. Prepare working dilution immediately before use.

Western Blot 1:2,000 – 1:10,000

Immunoprecipitation 2 – 5 µg/mg lysate

Immunohistochemistry 1:500 – 1:2,000. Epitope retrieval with citrate buffer pH 6.0 is recommended for FFPE tissue sections.

**APPLICATION NOTES** Western blot of immunoprecipitates performed using Normal Pig Serum (Cat. No. S100-020), Goat anti-Rabbit Light Chain HRP Conjugate (Cat. No. A120-113P) and 4-8% SDS-PAGE (link to IP-western blot protocol in Additional Info section below).

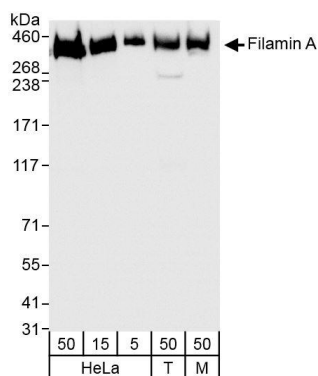
Western blot of lysates performed using standard western blot reagents and 4-8% SDS-PAGE.

**ADDITIONAL INFO** <https://www.bethyl.com/product/A301-135A>

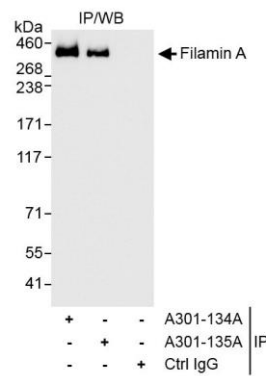
Use the link above to view SDS, a current list of citations, and other product specific information.

IP-western blot protocol [https://www.bethyl.com/content/protocol\\_IP\\_WB](https://www.bethyl.com/content/protocol_IP_WB)

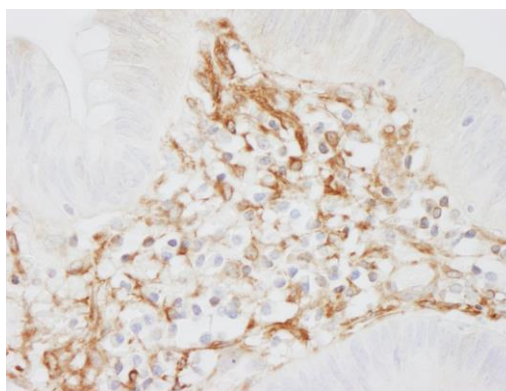
This document certifies that this product has met all of the quality control standards defined by Bethyl Laboratories, Inc.  
Eric McIntush, PhD | Chief Scientific Officer Date: October 18, 2019



**Detection of human and mouse Filamin A by western blot.** *Samples:* Whole cell lysate from HeLa (5, 15 and 50 µg), HEK293T (T; 50 µg) and mouse NIH 3T3 (M; 50 µg) cells. *Antibodies:* Affinity purified rabbit anti-Filamin A antibody A301-135A (lot A301-135A-1) used for WB at 0.04 µg/ml. *Detection:* Chemiluminescence with exposure time of 1 second.



**Detection of human Filamin A by western blot of immunoprecipitates.** *Samples:* Whole cell lysate (1 mg for IP, 20% of IP loaded) from HeLa cells. *Antibodies:* Affinity purified rabbit anti-Filamin A antibody A301-135A (lot A301-135A-1) used for IP at 3 µg/mg lysate. Filamin A was also immunoprecipitated by rabbit anti-Filamin A antibody A301-134A, which recognizes an upstream epitope. For blotting immunoprecipitated Filamin A, A301-135A was used at 0.1 µg/ml. *Detection:* Chemiluminescence with exposure time of 1 second.



**Detection of human Filamin A by immunohistochemistry.** *Sample:* FFPE section of human colon carcinoma. *Antibody:* Affinity purified rabbit anti-Filamin A (Cat. No. A301-135A lot 1) used at a dilution of 1:1,000 (0.2µg/ml). *Detection:* DAB