

Filamin A Antibody

Rabbit Polyclonal

Antigen Affinity Purified

Protein ID NP_001447.1

Catalog No. A301-134A

GeneID 2316

Lot No. A301-134A-1



| | |
|------------------------------|---|
| APPLICATIONS | WB, IP, IHC |
| SPECIES REACTIVITY | Human, Mouse |
| AMOUNT | 100 µl |
| CONCENTRATION | 200 µg/ml |
| STORAGE/SHELF LIFE | 2 – 8° C / 1 year from date of receipt |
| PHYSICAL STATE | Liquid |
| BUFFER | Tris-buffered Saline containing 0.1% BSA and 0.09% Sodium Azide |
| ISOTYPE | IgG |
| ORIGIN | USA |
| PRODUCTION PROCEDURES | Antibody was affinity purified using an epitope specific to Filamin A immobilized on solid support. |

The epitope recognized by A301-134A maps to a region between residue 1725 and 1775 of human Filamin A using the numbering given in entry NP_001447.1 (GeneID 2316).

Immunoglobulin concentration was determined by extinction coefficient: absorbance at 280 nm of 1.4 equals 1.0 mg of IgG.

APPLICATIONS Centrifuge tube to remove product from lid. Optimal working dilutions should be determined experimentally by the investigator. Prepare working dilution immediately before use.

Western Blot 1:2,000 – 1:10,000

Immunoprecipitation 2 – 5 µg/mg lysate

Immunohistochemistry 1:500 – 1:2,000. Epitope retrieval with citrate buffer pH 6.0 is recommended for FFPE tissue sections.

APPLICATION NOTES Western blot of immunoprecipitates performed using Normal Pig Serum (Cat. No. S100-020), Goat anti-Rabbit Light Chain HRP Conjugate (Cat. No. A120-113P) and 4-8% SDS-PAGE (link to IP-western blot protocol in Additional Info section below).

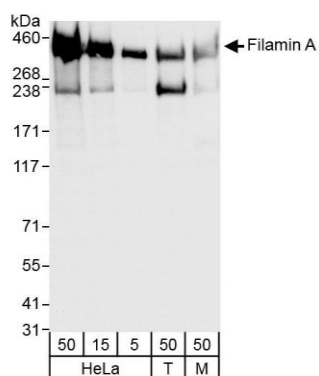
Western blot of lysates performed using standard western blot reagents and 4-8% SDS-PAGE.

ADDITIONAL INFO <https://www.bethyl.com/product/A301-134A>

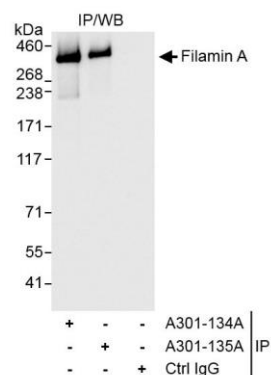
Use the link above to view SDS, a current list of citations, and other product specific information.

IP-western blot protocol https://www.bethyl.com/content/protocol_IP_WB

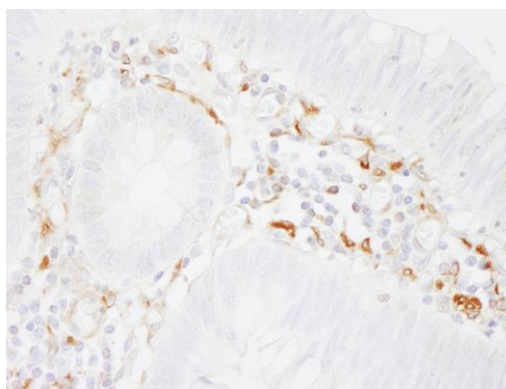
This document certifies that this product has met all of the quality control standards defined by Bethyl Laboratories, Inc.
Eric McIntush, PhD | Chief Scientific Officer Date: October 18, 2019



Detection of human and mouse Filamin A by western blot. *Samples:* Whole cell lysate from HeLa (5, 15 and 50 µg), HEK293T (T; 50 µg) and mouse NIH 3T3 (M; 50 µg) cells. *Antibodies:* Affinity purified rabbit anti-Filamin A antibody A301-134A (lot A301-134A-1) used for WB at 0.04 µg/ml. *Detection:* Chemiluminescence with exposure time of 1 second.



Detection of human Filamin A by western blot of immunoprecipitates. *Samples:* Whole cell lysate (1 mg for IP, 20% of IP loaded) from HeLa cells. *Antibodies:* Affinity purified rabbit anti-Filamin A antibody A301-134A (lot A301-134A-1) used for IP at 3 µg/mg lysate. Filamin A was also immunoprecipitated by rabbit anti-Filamin A antibody A301-135A, which recognizes an upstream epitope. For blotting immunoprecipitated Filamin A, A301-134A was used at 0.1 µg/ml. *Detection:* Chemiluminescence with exposure time of 1 second.



Detection of human Filamin A by immunohistochemistry. *Sample:* FFPE section of human colon carcinoma. *Antibody:* Affinity purified rabbit anti-Filamin A (Cat. No. A301-134A lot 1) used at a dilution of 1:1,000 (0.2µg/ml). *Detection:* DAB