

# UBE1 Antibody

Rabbit Polyclonal

Antigen Affinity Purified

Protein ID NP\_003325.2

Catalog No. A301-128A

GeneID 7317

Lot No. A301-128A-1



<b>APPLICATIONS</b>	WB, IHC
<b>SPECIES REACTIVITY</b>	Human, Mouse
<b>PRESUMED REACTIVITY</b>	Based on 100% sequence identity, this antibody is predicted to react with Rat, Bovine and Rabbit
<b>AMOUNT</b>	100 µl
<b>CONCENTRATION</b>	200 µg/ml
<b>STORAGE/SHELF LIFE</b>	2 - 8° C / 1 year from date of receipt
<b>PHYSICAL STATE</b>	Liquid
<b>BUFFER</b>	Tris-buffered Saline containing 0.1% BSA and 0.09% Sodium Azide
<b>ISOTYPE</b>	IgG
<b>ORIGIN</b>	USA
<b>PRODUCTION PROCEDURES</b>	Antibody was affinity purified using an epitope specific to UBE1 immobilized on solid support.

The epitope recognized by A301-128A maps to a region between residue 1008 and 1058 of human ubiquitin-activating enzyme E1 using the numbering given in entry NP\_003325.2 (GeneID 7317).

Immunoglobulin concentration was determined by extinction coefficient: absorbance at 280 nm of 1.4 equals 1.0 mg of IgG.

**APPLICATIONS** Centrifuge tube to remove product from lid. Optimal working dilutions should be determined experimentally by the investigator. Prepare working dilution immediately before use.

Western Blot 1:2,000 – 1:10,000

Immunoprecipitation Not recommended. Use rabbit anti-UBE1 antibody A301-125A.

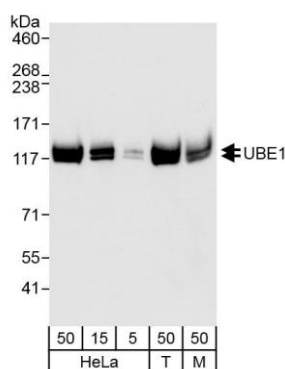
Immunohistochemistry 1:100 – 1:500. Epitope retrieval with citrate buffer pH 6.0 is recommended for FFPE tissue sections.

**IHC HUMAN CONTROLS** Breast Carcinoma, Ovarian Carcinoma, Prostate Carcinoma

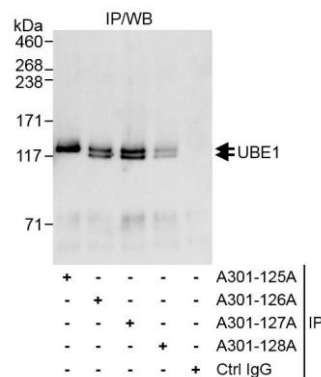
**ADDITIONAL INFO** <https://www.bethyl.com/product/A301-128A>

Use the link above to view SDS, a current list of citations, and other product specific information.

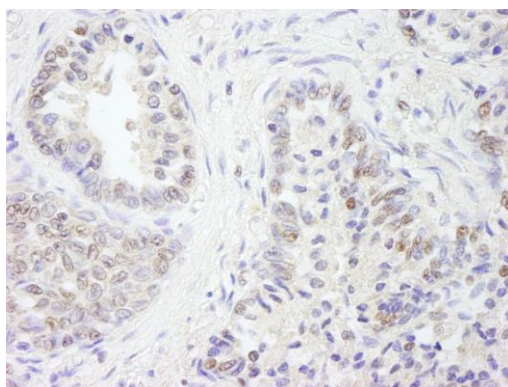
This document certifies that this product has met all of the quality control standards defined by Bethyl Laboratories, Inc.  
Eric McIntush, PhD | Chief Scientific Officer Date: April 24, 2020



**Detection of human and mouse UBE1 by western blot.**  
*Samples:* Whole cell lysate from HeLa (5, 15 and 50 µg), HEK293T (T; 50 µg) and mouse NIH 3T3 (M; 50 µg) cells.  
*Antibodies:* Affinity purified rabbit anti-UBE1 antibody A301-128A (lot A301-128A-1) used for WB at 0.04 µg/ml.  
*Detection:* Chemiluminescence with exposure time of 10 seconds.



**Detection of human UBE1 by western blot of immunoprecipitates.** *Samples:* Whole cell lysate (1 mg for IP, 20% of IP loaded) from HeLa cells. *Antibodies:* Affinity purified rabbit anti-UBE1 antibody A301-128A (lot A301-128A-1) used for IP at 3 µg/mg lysate. UBE1 was immunoprecipitated more efficiently by rabbit anti-UBE1 antibodies A301-125A, A301-126A and A301-127A, which recognize upstream epitopes. For blotting immunoprecipitated UBE1, A301-128A was used at 1.0 µg/ml. *Detection:* Chemiluminescence with exposure time of 10 seconds.



**Detection of human UBE1 by immunohistochemistry.**  
*Sample:* FFPE section of human prostate carcinoma.  
*Antibody:* Affinity purified rabbit anti-UBE1 (Cat. No. A301-128A lot 1) used at a dilution of 1:200 (1 µg/ml).  
*Detection:* DAB