

# UBE1 Antibody

Rabbit Polyclonal

Antigen Affinity Purified

Protein ID NP\_003325.2

Catalog No. A301-125A

GeneID 7317

Lot No. A301-125A-1



<b>APPLICATIONS</b>	WB, IP
<b>SPECIES REACTIVITY</b>	Human, Mouse
<b>PRESUMED REACTIVITY</b>	Based on 100% sequence identity, this antibody is predicted to react with Rat, Bovine and Rabbit
<b>AMOUNT</b>	100 µl
<b>CONCENTRATION</b>	200 µg/ml
<b>STORAGE/SHELF LIFE</b>	2 - 8° C / 1 year from date of receipt
<b>PHYSICAL STATE</b>	Liquid
<b>BUFFER</b>	Tris-buffered Saline containing 0.1% BSA and 0.09% Sodium Azide
<b>ISOTYPE</b>	IgG
<b>ORIGIN</b>	USA
<b>PRODUCTION PROCEDURES</b>	Antibody was affinity purified using an epitope specific to UBE1 immobilized on solid support.

The epitope recognized by A301-125A maps to a region between residue 1 and 50 of human ubiquitin-activating enzyme E1 using the numbering given in entry NP\_003325.2 (GeneID 7317).

Immunoglobulin concentration was determined by extinction coefficient: absorbance at 280 nm of 1.4 equals 1.0 mg of IgG.

**APPLICATIONS** Centrifuge tube to remove product from lid. Optimal working dilutions should be determined experimentally by the investigator. Prepare working dilution immediately before use.

Western Blot 1:2,000 – 1:10,000

Immunoprecipitation 2 – 5 µg/mg lysate

**APPLICATION NOTES** Western blot of immunoprecipitates performed using Normal Pig Serum (Cat. No. S100-020), Goat anti-Rabbit Light Chain HRP Conjugate (Cat. No. A120-113P) and 4-8% SDS-PAGE (link to IP-western blot protocol in Additional Info section below).

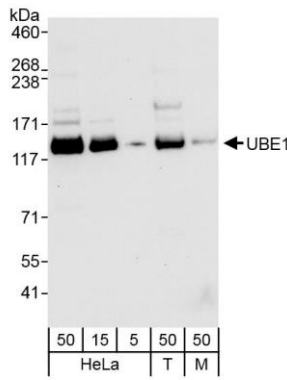
Western blot of lysates performed using standard western blot reagents and 4-8% SDS-PAGE.

**ADDITIONAL INFO** <https://www.bethyl.com/product/A301-125A>

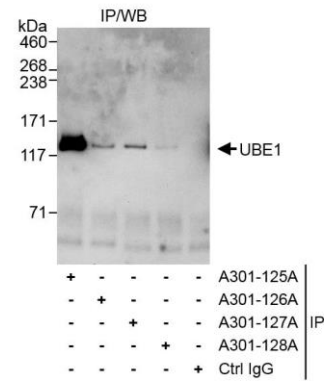
Use the link above to view SDS, a current list of citations, and other product specific information.

IP-western blot protocol [https://www.bethyl.com/content/protocol\\_IP\\_WB](https://www.bethyl.com/content/protocol_IP_WB)

This document certifies that this product has met all of the quality control standards defined by Bethyl Laboratories, Inc.  
Eric McIntush, PhD | Chief Scientific Officer Date: October 18, 2019



**Detection of human and mouse UBE1 by western blot.**  
*Samples:* Whole cell lysate from HeLa (5, 15 and 50 µg), HEK293T (T; 50 µg) and mouse NIH 3T3 (M; 50 µg) cells.  
*Antibodies:* Affinity purified rabbit anti-UBE1 antibody A301-125A (lot A301-125A-1) used for WB at 0.04 µg/ml.  
*Detection:* Chemiluminescence with exposure time of 30 seconds.



**Detection of human UBE1 by western blot of immunoprecipitates.** *Samples:* Whole cell lysate (1 mg for IP, 20% of IP loaded) from HeLa cells. *Antibodies:* Affinity purified rabbit anti-UBE1 antibody A301-125A (lot A301-125A-1) used for IP at 3 µg/mg lysate. UBE1 was also immunoprecipitated efficiently by rabbit anti-UBE1 antibodies A301-126A and A301-127A, which recognize downstream epitopes. For blotting immunoprecipitated UBE1, A301-125A was used at 1.0 µg/ml. *Detection:* Chemiluminescence with exposure time of 30 seconds.