

# UBE4B Antibody

Rabbit Polyclonal

Antigen Affinity Purified

Protein ID AAD02233.1

Catalog No. A301-123A

GeneID 10277

Lot No. A301-123A-3



<b>APPLICATIONS</b>	WB, IP
<b>SPECIES REACTIVITY</b>	Human, Mouse
<b>AMOUNT</b>	100 µl
<b>CONCENTRATION</b>	200 µg/ml
<b>STORAGE/SHELF LIFE</b>	2 – 8° C / 1 year from date of receipt
<b>PHYSICAL STATE</b>	Liquid
<b>BUFFER</b>	Tris-buffered Saline containing 0.1% BSA and 0.09% Sodium Azide
<b>ISOTYPE</b>	IgG
<b>ORIGIN</b>	USA
<b>PRODUCTION PROCEDURES</b>	Antibody was affinity purified using an epitope specific to UBE4B immobilized on solid support.

The epitope recognized by A301-123A maps to a region between residue 125 and 175 of human ubiquitination factor E4B using the numbering given in entry AAD02233.1 (GeneID 10277).

Immunoglobulin concentration was determined by extinction coefficient: absorbance at 280 nm of 1.4 equals 1.0 mg of IgG.

**APPLICATIONS** Centrifuge tube to remove product from lid. Optimal working dilutions should be determined experimentally by the investigator. Prepare working dilution immediately before use.

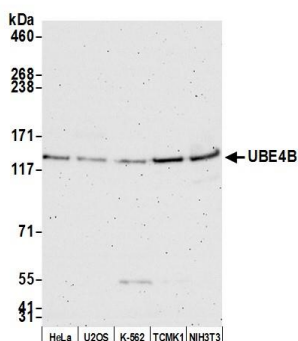
Western Blot 1:2,000 – 1:10,000

Immunoprecipitation 2 – 10 µg/mg lysate

**ADDITIONAL INFO** <https://www.bethyl.com/product/A301-123A>

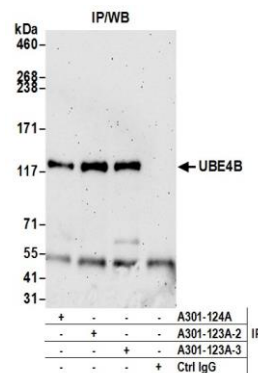
Use the link above to view SDS, a current list of citations, and other product specific information. IP-western blot protocol: [https://www.bethyl.com/content/protocol\\_IP\\_WB](https://www.bethyl.com/content/protocol_IP_WB)

This document certifies that this product has met all of the quality control standards defined by Bethyl Laboratories, Inc.  
Eric McIntush, PhD | Chief Scientific Officer Date: May 29, 2020



**Detection of human and mouse UBE4B by western blot.**

*Samples:* Whole cell lysate (50 µg) from HeLa, U2OS, K-562, TCMK-1, and NIH 3T3 cells prepared using NETN lysis buffer. *Antibody:* Affinity purified rabbit anti-UBE4B antibody A301-123A (lot A301-123A-3) used for WB at 0.1 µg/ml. *Detection:* Chemiluminescence with an exposure time of 3 minutes.



**Detection of human UBE4B by western blot of immunoprecipitates.**

*Samples:* Whole cell lysate (1.0 mg per IP reaction; 20% of IP loaded) from HeLa cells prepared using NETN lysis buffer. *Antibodies:* Affinity purified rabbit anti-UBE4B antibody A301-123A (lot A301-123A-3) used for IP at 6 µg per reaction. UBE4B was also immunoprecipitated by a previous lot of this antibody (lot A301-123A-2) and rabbit anti-UBE4B antibody A301-124A. For blotting immunoprecipitated UBE4B, A301-123A was used at 0.1 µg/ml. *Detection:* Chemiluminescence with an exposure time of 3 minutes.