

KIF22/KID Antibody

Rabbit Polyclonal

Antigen Affinity Purified

Protein ID NP_015556.1

Catalog No. A301-114A

GeneID 3835

Lot No. A301-114A-1



APPLICATIONS	IP
SPECIES REACTIVITY	Human
PRESUMED REACTIVITY	Based on 100% sequence identity, this antibody is predicted to react with Orangutan
AMOUNT	100 µl
CONCENTRATION	1000 µg/ml
STORAGE/SHELF LIFE	2 - 8° C / 1 year from date of receipt
PHYSICAL STATE	Liquid
BUFFER	Tris-citrate/phosphate buffer, pH 7 to 8 containing 0.09% Sodium Azide
ISOTYPE	IgG
ORIGIN	USA
PRODUCTION PROCEDURES	Antibody was affinity purified using an epitope specific to KIF22/KID immobilized on solid support.

The epitope recognized by A301-114A maps to a region between residue 375 and 425 of human kinesin family member 22 (Kinesin-like DNA-binding protein) using the numbering given in entry NP_015556.1 (GeneID 3835).

Immunoglobulin concentration was determined by extinction coefficient: absorbance at 280 nm of 1.4 equals 1.0 mg of IgG.

APPLICATIONS Centrifuge tube to remove product from lid. Optimal working dilutions should be determined experimentally by the investigator. Prepare working dilution immediately before use.

Western Blot Not recommended. Use rabbit anti-KIF22/KID antibody A301-115A.

Immunoprecipitation 2 - 5 µg/mg lysate

APPLICATION NOTES Western blot of immunoprecipitates performed using Normal Pig Serum (Cat. No. S100-020), Goat anti-Rabbit Light Chain HRP Conjugate (Cat. No. A120-113P) and 4-8% SDS-PAGE (link to IP-western blot protocol in Additional Info section below).

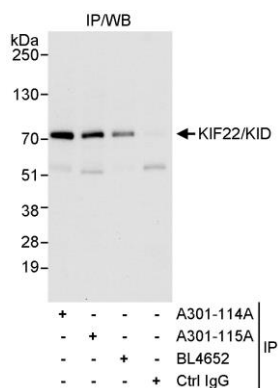
ADDITIONAL INFO <https://www.bethyl.com/product/A301-114A>

Use the link above to view SDS, a current list of citations, and other product specific information.

IP-western blot protocol: https://www.bethyl.com/content/protocol_IP_WB

This document certifies that this product has met all of the quality control standards defined by Bethyl Laboratories, Inc.
Eric McIntush, PhD | Chief Scientific Officer

Date: June 21, 2019



Detection of human KIF22/KID by western blot of immunoprecipitates. *Samples:* Whole cell lysate (1 mg for IP, 20% of IP loaded) from HeLa cells. *Antibodies:* Affinity purified rabbit anti-KIF22/KID antibody A301-114A used for IP at 3 µg/mg lysate. KIF22/KID was also immunoprecipitated by rabbit anti-KIF22/KID antibodies A301-115A and BL4652, which recognize downstream epitopes. For blotting immunoprecipitated KIF22/KID, A301-115A was used at 1 µg/ml. *Detection:* Chemiluminescence with an exposure time of 30 seconds.