

# Senataxin Antibody

Rabbit Polyclonal

Antigen Affinity Purified

Catalog No. A301-105A

Lot No. A301-105A-4

Protein ID NP\_055861.2

GeneID 23064



**APPLICATIONS** WB, IP

**SPECIES REACTIVITY** Human

**AMOUNT** 100 µl

**CONCENTRATION** 1000 µg/ml

**STORAGE/SHELF LIFE** 2 – 8° C / 1 year from date of receipt

**PHYSICAL STATE** Liquid

**BUFFER** Tris-citrate/phosphate buffer, pH 7 to 8 containing 0.09% Sodium Azide

**ISOTYPE** IgG

**ORIGIN** USA

**PRODUCTION PROCEDURES** Antibody was affinity purified using an epitope specific to Senataxin immobilized on solid support.

The epitope recognized by A301-105A maps to a region between residue 2627 and 2677 of human senataxin using the numbering given in entry NP\_055861.2 (GeneID 23064).

Immunoglobulin concentration was determined by extinction coefficient: absorbance at 280 nm of 1.4 equals 1.0 mg of IgG.

**APPLICATIONS** Centrifuge tube to remove product from lid. Optimal working dilutions should be determined experimentally by the investigator. Prepare working dilution immediately before use.

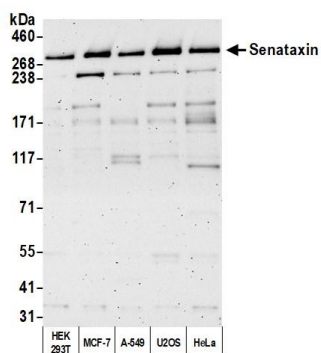
Western Blot 1:2,000 – 1:10,000

Immunoprecipitation 2 – 10 µg/mg lysate

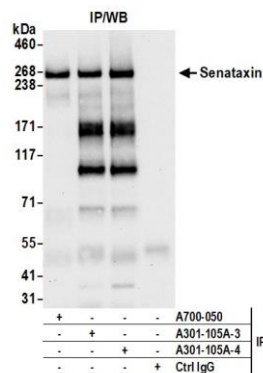
**ADDITIONAL INFO** <https://www.bethyl.com/product/A301-105A>

Use the link above to view SDS, a current list of citations, and other product specific information. IP-western blot protocol: [https://www.bethyl.com/content/protocol\\_IP\\_WB](https://www.bethyl.com/content/protocol_IP_WB)

This document certifies that this product has met all of the quality control standards defined by Bethyl Laboratories, Inc.  
Eric McIntush, PhD | Chief Scientific Officer Date: October 20, 2020



**Detection of human Senataxin by western blot.** *Samples:* Whole cell lysate (50 µg) from HEK293T, MCF-7, A-549, U2OS, and HeLa cells prepared using NETN lysis buffer. *Antibody:* Affinity purified rabbit anti-Senataxin antibody A301-105A (lot A301-105A-4) used for WB at 0.04 µg/ml. *Detection:* Chemiluminescence with an exposure time of 3 minutes.



**Detection of human Senataxin by western blot of immunoprecipitates.** *Samples:* Whole cell lysate (1.0 mg per IP reaction; 20% of IP loaded) from HEK293T cells prepared using NETN lysis buffer. *Antibodies:* Affinity purified rabbit anti-Senataxin antibody A301-105A (lot A301-105A-4) used for IP at 6 µg per reaction. Senataxin was also immunoprecipitated by a previous lot of this antibody (lot A301-105A-3) and rabbit recombinant monoclonal anti-Senataxin antibody A700-050. For blotting immunoprecipitated Senataxin, A301-105A was used at 0.04 µg/ml. *Detection:* Chemiluminescence with an exposure time of 10 seconds.