

# PPP2R5D Antibody

Rabbit Polyclonal

Antigen Affinity Purified

Protein ID NP\_006236.1

Catalog No. A301-099A

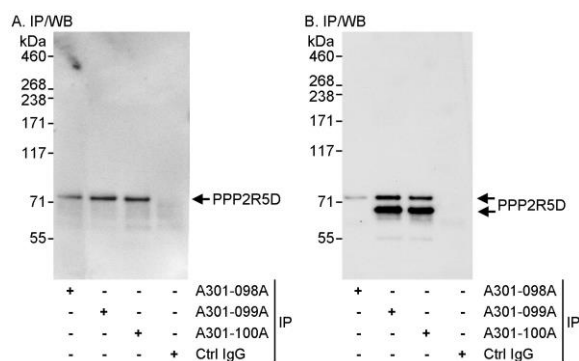
GeneID 5528

Lot No. A301-099A-1



<b>APPLICATIONS</b>	IP
<b>SPECIES REACTIVITY</b>	Human
<b>PRESUMED REACTIVITY</b>	Based on 100% sequence identity, this antibody is predicted to react with Rabbit
<b>AMOUNT</b>	100 µl
<b>CONCENTRATION</b>	1000 µg/ml
<b>STORAGE/SHELF LIFE</b>	2 - 8° C / 1 year from date of receipt
<b>PHYSICAL STATE</b>	Liquid
<b>BUFFER</b>	Tris-citrate/phosphate buffer, pH 7 to 8 containing 0.09% Sodium Azide
<b>ISOTYPE</b>	IgG
<b>ORIGIN</b>	USA
<b>PRODUCTION PROCEDURES</b>	<p>Antibody was affinity purified using an epitope specific to PPP2R5D immobilized on solid support.</p> <p>The epitope recognized by A301-099A maps to a region between residue 500 and 550 of human serine/threonine-protein phosphatase 2A 56 kDa regulatory subunit delta using the numbering given in entry NP_006236.1 (GeneID 5528).</p> <p>Immunoglobulin concentration was determined by extinction coefficient: absorbance at 280 nm of 1.4 equals 1.0 mg of IgG.</p>
<b>APPLICATIONS</b>	<p>Centrifuge tube to remove product from lid. Optimal working dilutions should be determined experimentally by the investigator. Prepare working dilution immediately before use.</p> <p>Western Blot                      Not recommended. Use rabbit anti-PPP2R5D antibody A301-098A or A301-100A.</p> <p>Immunoprecipitation      2 - 5 µg/mg lysate</p>
<b>APPLICATION NOTES</b>	Western blot of immunoprecipitates performed using Normal Pig Serum (Cat. No. S100-020), Goat anti-Rabbit Light Chain HRP Conjugate (Cat. No. A120-113P) and 4-8% SDS-PAGE (link to IP-western blot protocol in Additional Info section below).
<b>ADDITIONAL INFO</b>	<p><a href="https://www.bethyl.com/product/A301-099A">https://www.bethyl.com/product/A301-099A</a></p> <p>Use the link above to view SDS, a current list of citations, and other product specific information. IP-western blot protocol: <a href="https://www.bethyl.com/content/protocol_IP_WB">https://www.bethyl.com/content/protocol_IP_WB</a></p>

This document certifies that this product has met all of the quality control standards defined by Bethyl Laboratories, Inc.  
Eric McIntush, PhD | Chief Scientific Officer Date: June 21, 2019



**Detection of human PPP2R5D by western blot of immunoprecipitates.** *Samples:* Whole cell lysate (1 mg for IP, 20% of IP loaded) from HeLa cells. *Antibodies:* Affinity purified rabbit anti-PPP2R5D antibody A301-099A used for IP at 3 µg/mg lysate. PPP2R5D was also immunoprecipitated by rabbit anti-PPP2R5D antibodies A301-098A and A301-100A, which recognize other epitopes. For blotting immunoprecipitated PPP2R5D, A301-098A (A) and A301-100A (B) were used at 0.1 µg/ml. *Detection:* Chemiluminescence with exposure times of 10 seconds (A) and 30 seconds (B).