

# CSTF64 Antibody

Rabbit Polyclonal

Antigen Affinity Purified

Protein ID NP\_001316.1

Catalog No. A301-092A

GeneID 1478

Lot No. A301-092A-2



<b>APPLICATIONS</b>	WB, IP, IHC
<b>SPECIES REACTIVITY</b>	Human
<b>PRESUMED REACTIVITY</b>	Based on 100% sequence identity, this antibody is predicted to react with Bovine and Orangutan
<b>AMOUNT</b>	100 µl
<b>CONCENTRATION</b>	200 µg/ml
<b>STORAGE/SHELF LIFE</b>	2 - 8° C / 1 year from date of receipt
<b>PHYSICAL STATE</b>	Liquid
<b>BUFFER</b>	Tris-buffered Saline containing 0.1% BSA and 0.09% Sodium Azide
<b>ISOTYPE</b>	IgG
<b>ORIGIN</b>	USA
<b>PRODUCTION PROCEDURES</b>	Antibody was affinity purified using an epitope specific to CSTF64 immobilized on solid support.

The epitope recognized by A301-092A maps to a region between residue 375 and 425 of human cleavage stimulation factor, 3' pre-RNA, subunit 2, 64kDa using the numbering given in entry NP\_001316.1 (GeneID 1478).

Immunoglobulin concentration was determined by extinction coefficient: absorbance at 280 nm of 1.4 equals 1.0 mg of IgG.

**APPLICATIONS** Centrifuge tube to remove product from lid. Optimal working dilutions should be determined experimentally by the investigator. Prepare working dilution immediately before use.

Western Blot 1:2,000 - 1:10,000

Immunoprecipitation 2 - 5 µg/mg lysate

Immunohistochemistry 1:200 - 1:1,000. Epitope retrieval with citrate buffer pH 6.0 is recommended for FFPE tissue sections.

**APPLICATION NOTES** Western blot of immunoprecipitates performed using Normal Pig Serum (Cat. No. S100-020), Goat anti-Rabbit Light Chain HRP Conjugate (Cat. No. A120-113P) and 4-20% SDS-PAGE (link to IP-western blot protocol in Additional Info section below).

Western blot of lysates performed using standard western blot reagents and 4-20% SDS-PAGE.

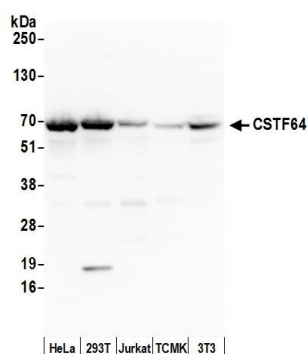
**IHC HUMAN CONTROLS** Breast Carcinoma, Colon Carcinoma, Linitis Plastica Stomach Cancer, Ovarian Carcinoma, Prostate Carcinoma, Testicular Seminoma

**ADDITIONAL INFO** <https://www.bethyl.com/product/A301-092A>

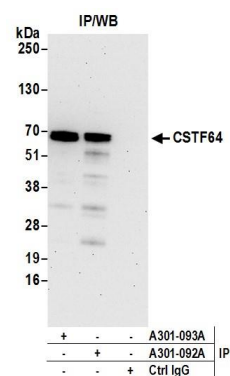
Use the link above to view SDS, a current list of citations, and other product specific information.

IP-western blot protocol: [https://www.bethyl.com/content/protocol\\_IP\\_WB](https://www.bethyl.com/content/protocol_IP_WB)

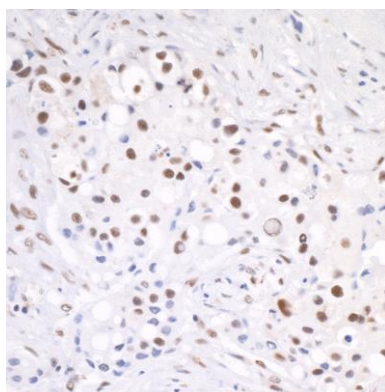
This document certifies that this product has met all of the quality control standards defined by Bethyl Laboratories, Inc.  
Eric McIntush, PhD | Chief Scientific Officer Date: June 21, 2019



**Detection of human and mouse CSTF64 by western blot.**  
*Samples:* Whole cell lysate (50 µg) from HeLa, HEK293T, Jurkat, mouse TCMK-1, and mouse NIH 3T3 cells prepared using NETN lysis buffer. *Antibody:* Affinity purified rabbit anti-CSTF64 antibody A301-092A (lot A301-092A-2) used for WB at 0.1 µg/ml. *Detection:* Chemiluminescence with an exposure time of 30 seconds.



**Detection of human CSTF64 by western blot of immunoprecipitates.**  
*Samples:* Whole cell lysate (1.0 mg per IP reaction; 20% of IP loaded) from HeLa cells prepared using NETN lysis buffer. *Antibodies:* Affinity purified rabbit anti-CSTF64 antibody CSTF64-A (lot CSTF64-A-2) used for IP at 3 µg per reaction. CSTF64 was also immunoprecipitated by rabbit anti-CSTF64 antibody A301-093A. For blotting immunoprecipitated CSTF64, A301-092A was used at 1 µg/ml. *Detection:* Chemiluminescence with an exposure time of 30 seconds.



**Detection of human CSTF64 by immunohistochemistry.**  
*Sample:* FFPE section of human lung carcinoma. *Antibody:* Affinity purified rabbit anti-CSTF64 (Cat. No. A301-092A Lot2) used at a dilution of 1:200 (1 µg/ml). *Detection:* DAB