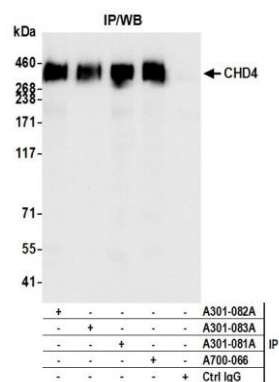


Detection of human and mouse CHD4 by western blot.

Samples: Whole cell lysate from HeLa (5, 15 and 50 µg, HEK293T (T; 50 µg) and mouse NIH 3T3 (M; 50 µg) cells.
Antibodies: Affinity purified rabbit anti-CHD4 antibody A301-082A (lot A301-082A-1) used at 0.04 µg/ml.
Detection: Chemiluminescence with exposure times of 10 seconds.



Detection of human CHD4 by western blot of immunoprecipitates.

Samples: Whole cell lysate (1.0 mg per IP reaction; 20% of IP loaded) from HeLa cells.
Antibodies: Affinity purified rabbit anti-CHD4 antibody A301-082A (lot A301-082A-1) used for IP at 6 µg per reaction. CHD4 was also immunoprecipitated by rabbit anti-CHD4 antibodies (A301-081A, A301-083A), and rabbit anti-CHD4 recombinant monoclonal antibody [BLR066G] (A700-066). For blotting immunoprecipitated CHD4, A700-066 was used at 1:1000. *Detection:* Chemiluminescence with an exposure time of 1 second.