

# CHD4 Antibody

Rabbit Polyclonal

Antigen Affinity Purified

Protein ID NP\_001264.2

Catalog No. A301-081A

GeneID 1108

Lot No. A301-081A-6



<b>APPLICATIONS</b>	WB, IP, ChIP-Seq
<b>SPECIES REACTIVITY</b>	Human, Mouse
<b>AMOUNT</b>	100 µl
<b>CONCENTRATION</b>	1000 µg/ml
<b>STORAGE/SHELF LIFE</b>	2 – 8° C / 1 year from date of receipt
<b>PHYSICAL STATE</b>	Liquid
<b>BUFFER</b>	Tris-citrate/phosphate buffer, pH 7 to 8 containing 0.09% Sodium Azide
<b>ISOTYPE</b>	IgG
<b>ORIGIN</b>	USA
<b>PRODUCTION PROCEDURES</b>	Antibody was affinity purified using an epitope specific to CHD4/Mi2 beta immobilized on solid support.

The epitope recognized by A301-081A maps to a region between residue 25 and 75 of human chromodomain helicase DNA binding protein 4 (Mi2 autoantigen 218 kDa protein) using the numbering given in entry NP\_001264.2 (GeneID 1108).

Immunoglobulin concentration was determined by extinction coefficient: absorbance at 280 nm of 1.4 equals 1.0 mg of IgG.

**APPLICATIONS** Centrifuge tube to remove product from lid. Optimal working dilutions should be determined experimentally by the investigator. Prepare working dilution immediately before use.

Western Blot 1:10,000 – 1:25,000

Immunoprecipitation 2 – 10 µg/mg lysate

ChIP-Seq ChIP-Seq 10 µg as per Ram O et al., Cell. 2011 Dec 23;147(7):1628–39. Previous lots of this antibody have performed in this application.

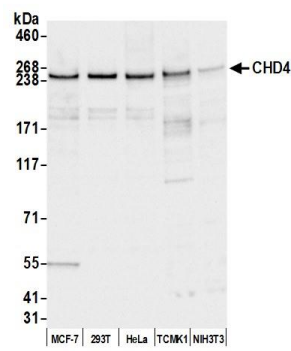
**APPLICATION NOTES** Western blot of immunoprecipitates performed using Normal Pig Serum (Cat. No. S100-020), Goat anti-Rabbit Light Chain HRP Conjugate (Cat. No. A120-113P) and 4–8% SDS-PAGE (link to IP-western blot protocol in Additional Info section below).

Western blot of lysates performed using standard western blot reagents and 4–8% SDS-PAGE.

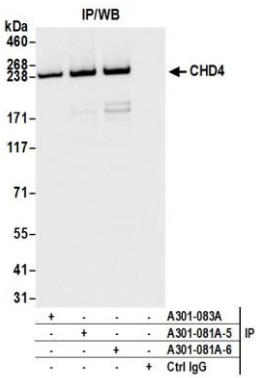
**ADDITIONAL INFO** <https://www.bethyl.com/product/A301-081A>

Use the link above to view SDS, a current list of citations, and other product specific information. IP-western blot protocol [https://www.bethyl.com/content/protocol\\_IP\\_WB](https://www.bethyl.com/content/protocol_IP_WB)

This document certifies that this product has met all of the quality control standards defined by Bethyl Laboratories, Inc.  
Eric McIntush, PhD | Chief Scientific Officer Date: July 1, 2019



**Detection of human and mouse CHD4 by western blot.**  
*Samples:* Whole cell lysate (50 µg) from MCF-7, HEK293T, HeLa, TCMK-1, and NIH 3T3 cells prepared using NETN lysis buffer. *Antibody:* Affinity purified rabbit anti-CHD4 antibody A301-081A (lot A301-081A-6) used for WB at 0.04 µg/ml. *Detection:* Chemiluminescence with an exposure time of 1 second.



**Detection of human CHD4 by western blot of immunoprecipitates.** *Samples:* Whole cell lysate (1.0 mg per IP reaction; 20% of IP loaded) from HEK293T cells prepared using NETN lysis buffer. *Antibodies:* Affinity purified rabbit anti-CHD4 antibody A301-081A (lot A301-081A-6) used for IP at 6 µg per reaction. CHD4 was also immunoprecipitated by a previous lot of this antibody (lot A301-081A-5) and rabbit anti-CHD4 antibody A301-083A. For blotting immunoprecipitated CHD4, A301-081A was used at 0.04 µg/ml. *Detection:* Chemiluminescence with an exposure time of 1 second.