

KIF18A Antibody

Rabbit Polyclonal

Antigen Affinity Purified

Catalog No. A301-080A

Lot No. A301-080A-5

Protein ID NP_112494.2

GeneID 81930



APPLICATIONS WB, IP

SPECIES REACTIVITY Human

AMOUNT 100 µl

CONCENTRATION 1000 µg/ml

STORAGE/SHELF LIFE 2 – 8° C / 1 year from date of receipt

PHYSICAL STATE Liquid

BUFFER Tris-buffered Saline containing 0.1% BSA and 0.09% Sodium Azide

ISOTYPE IgG

ORIGIN USA

PRODUCTION PROCEDURES Antibody was affinity purified using an epitope specific to KIF18A immobilized on solid support.

The epitope recognized by A301-080A maps to a region between residue 848 and the C-terminus (residue 898) of human kinesin family member 18A using the numbering given in entry NP_112494.2 (GeneID 81930).

Immunoglobulin concentration was determined by extinction coefficient: absorbance at 280 nm of 1.4 equals 1.0 mg of IgG.

APPLICATIONS Centrifuge tube to remove product from lid. Optimal working dilutions should be determined experimentally by the investigator. Prepare working dilution immediately before use.

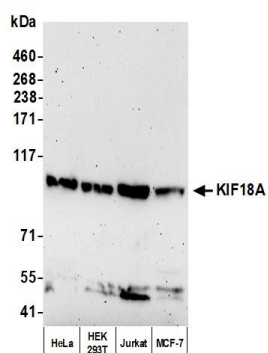
Western Blot 1:2,000 – 1:10,000

Immunoprecipitation 2 – 10 µg/mg lysate

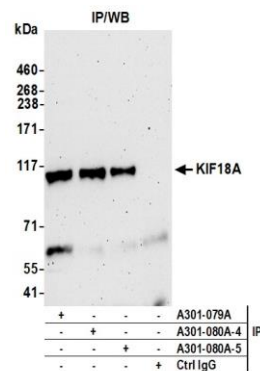
ADDITIONAL INFO <https://www.bethyl.com/product/A301-080A>

Use the link above to view SDS, a current list of citations, and other product specific information. IP-western blot protocol: https://www.bethyl.com/content/protocol_IP_WB

This document certifies that this product has met all of the quality control standards defined by Bethyl Laboratories, Inc.
Brian McWilliams, PhD Date: June 22, 2021



Detection of human KIF18A by western blot. *Samples:* Whole cell lysate (50 μ g) from HeLa, HEK293T, Jurkat, and MCF-7 cells prepared using NETN lysis buffer. *Antibody:* Affinity purified rabbit anti-KIF18A antibody (A301-080A lot 5) used for WB at 0.2 μ g/ml. *Detection:* Chemiluminescence with an exposure time of 3 minutes.



Detection of human KIF18A by western blot of immunoprecipitates. *Samples:* Whole cell lysate (1.0 mg per IP reaction; 20% of IP loaded) from HeLa cells prepared using NETN lysis buffer. *Antibodies:* Affinity purified rabbit anti-KIF18A antibody (A301-080A lot 5) used for IP at 6 μ g per reaction. KIF18A was also immunoprecipitated by a previous lot of this antibody (A301-080A lot 4) and a second antibody against a different epitope of KIF18A (A301-079A). For blotting immunoprecipitated KIF18A, A301-080A was used at 0.1 μ g/ml. *Detection:* Chemiluminescence with an exposure time of 3 minutes.