

KIF13A Antibody

Rabbit Polyclonal

Antigen Affinity Purified	RefSeq ID	NP_071396.3
Catalog No. A301-077A	Uniprot ID	Q9H1H9
Lot No. 2	GeneID	63971

APPLICATIONS	WB, IP
SPECIES REACTIVITY	Human
AMOUNT	100 µl
CONCENTRATION	1000 µg/ml
STORAGE/SHELF LIFE	2 – 8°C / 1 year from date of receipt
PHYSICAL STATE	Liquid
BUFFER	Tris–citrate/phosphate buffer, pH 7 to 8 containing 0.09% Sodium Azide
ISOTYPE	IgG
ORIGIN	USA
PRODUCTION PROCEDURES	Antibody was affinity purified using an epitope specific to KIF13A immobilized on solid support.

The epitope recognized by A301-077A maps to a region between residue 1675 and 1725 of human kinesin family member 13A using the numbering given in entry NP_071396.3 (GeneID 63971).

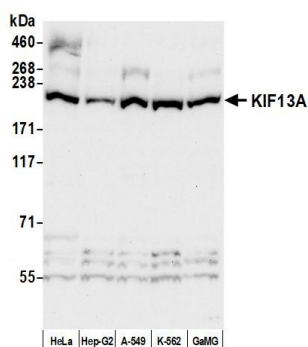
Immunoglobulin concentration was determined using Beer’s Law where 1 mg/mL IgG has an A280 of 1.4.

APPLICATIONS Centrifuge tube to remove product from lid. Optimal working dilutions should be determined experimentally by the investigator. Prepare working dilution immediately before use.

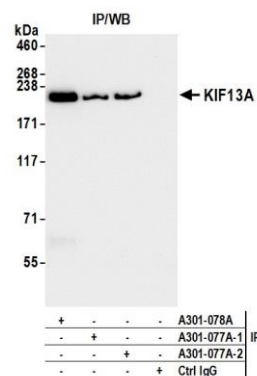
Western Blot	1:2000 – 1:10,000 (3–8% Tris–acetate gel recommended)
Immunoprecipitation	6 µg/mg lysate

ADDITIONAL INFO <https://www.fortislife.com/p/A301-077A>
Use the link above to view SDS, a current list of citations, and other product specific information.

This document certifies that this product has met all of the quality control standards defined by Bethyl Laboratories, Inc.
Michael Spencer, PhD Date: July 24, 2024



Detection of human KIF13A by western blot. *Samples:* Whole cell lysate (50 μ g) from HeLa, Hep-G2, A-549, K-562, and GaMG cells prepared using NETN lysis buffer. *Antibody:* Affinity purified rabbit anti-KIF13A antibody (A301-077A) used for WB at 1 μ g/ml. *Detection:* Chemiluminescence with an exposure time of 75 seconds.



Detection of human KIF13A by western blot of immunoprecipitates. *Samples:* Whole cell lysate (1.0 mg per IP reaction; 20% of IP loaded) from K-562 cells prepared using NETN lysis buffer. *Antibody:* Affinity purified rabbit anti-KIF13A antibody (A301-077A) used for IP at 6 μ g per reaction. KIF13A was also immunoprecipitated by a previous lot of this antibody (A301-077A lot 1) and a second antibody against a different epitope of KIF13A (A301-078A). For blotting immunoprecipitated KIF13A, A301-077A was used at 1 μ g/ml. *Detection:* Chemiluminescence with an exposure time of 30 seconds.