

# EG5/KIF11 Antibody

Rabbit Polyclonal

Antigen Affinity Purified

Protein ID NP\_004514.2

Catalog No. A301-075A

GeneID 3832

Lot No. A301-075A-1



<b>APPLICATIONS</b>	WB, IP
<b>SPECIES REACTIVITY</b>	Human
<b>AMOUNT</b>	100 µl
<b>CONCENTRATION</b>	200 µg/ml
<b>STORAGE/SHELF LIFE</b>	2 – 8° C / 1 year from date of receipt
<b>PHYSICAL STATE</b>	Liquid
<b>BUFFER</b>	Tris-buffered Saline containing 0.1% BSA and 0.09% Sodium Azide
<b>ISOTYPE</b>	IgG
<b>ORIGIN</b>	USA
<b>PRODUCTION PROCEDURES</b>	Antibody was affinity purified using an epitope specific to EG5/KIF11 immobilized on solid support.

The epitope recognized by A301-075A maps to a region between residue 925 and 975 of human kinesin-related motor protein Eg5 (kinesin family member 11) using the numbering given in entry NP\_004514.2 (GeneID 3832).

Immunoglobulin concentration was determined by extinction coefficient: absorbance at 280 nm of 1.4 equals 1.0 mg of IgG.

**APPLICATIONS** Centrifuge tube to remove product from lid. Optimal working dilutions should be determined experimentally by the investigator. Prepare working dilution immediately before use.

Western Blot 1:2,000 – 1:10,000

Immunoprecipitation 2 – 5 µg/mg lysate

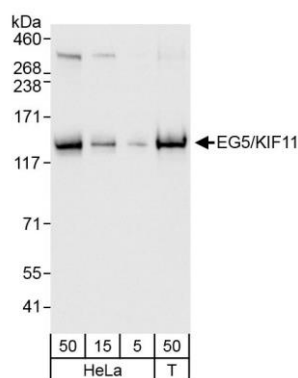
**APPLICATION NOTES** Western blot of immunoprecipitates performed using Normal Pig Serum (Cat. No. S100-020), Goat anti-Rabbit Light Chain HRP Conjugate (Cat. No. A120-113P) and 4-8% SDS-PAGE (link to IP-western blot protocol in Additional Info section below).

Western blot of lysates performed using standard western blot reagents and 4-8% SDS-PAGE.

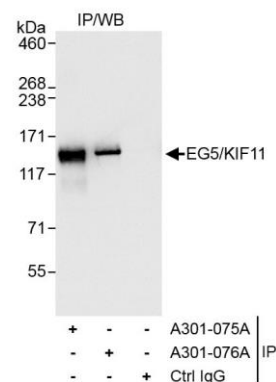
**ADDITIONAL INFO** <https://www.bethyl.com/product/A301-075A>

Use the link above to view SDS, a current list of citations, and other product specific information. IP-western blot protocol [https://www.bethyl.com/content/protocol\\_IP\\_WB](https://www.bethyl.com/content/protocol_IP_WB)

This document certifies that this product has met all of the quality control standards defined by Bethyl Laboratories, Inc.  
Eric McIntush, PhD | Chief Scientific Officer Date: October 17, 2019



**Detection of human EG5/KIF11 by western blot.** *Samples:* Whole cell lysate from HeLa (5, 15 and 50  $\mu$ g) and HEK293T (T; 50  $\mu$ g) cells. *Antibodies:* Affinity purified rabbit anti-EG5/KIF11 antibody A301-075A (lot A301-075A-1) used for WB at 0.04  $\mu$ g/ml. *Detection:* Chemiluminescence with exposure time of 3 seconds.



**Detection of human EG5/KIF11 by western blot of immunoprecipitates** *Samples:* Whole cell lysate (1 mg for IP, 20% of IP loaded) from HeLa cells. *Antibodies:* Affinity purified rabbit anti-EG5/KIF11 antibody A301-075A (lot A301-075A-1) used for IP at 3  $\mu$ g/mg lysate. EG5/KIF11 was also immunoprecipitated by rabbit anti-EG5/KIF11 antibody A301-076A, which recognizes a downstream epitope. For blotting immunoprecipitated EG5/KIF11, A301-075A was used at 1.0  $\mu$ g/ml. *Detection:* Chemiluminescence with exposure time of 1 second.