

# DDX46 Antibody

Rabbit Polyclonal

Antigen Affinity Purified

Protein ID NP\_055644.2

Catalog No. A301-052A

GeneID 9879

Lot No. A301-052A-1



<b>APPLICATIONS</b>	WB, IP, IHC
<b>SPECIES REACTIVITY</b>	Human, Mouse
<b>PRESUMED REACTIVITY</b>	Based on 100% sequence identity, this antibody is predicted to react with Rat and Orangutan
<b>AMOUNT</b>	100 µl
<b>CONCENTRATION</b>	200 µg/ml
<b>STORAGE/SHELF LIFE</b>	2 - 8° C / 1 year from date of receipt
<b>PHYSICAL STATE</b>	Liquid
<b>BUFFER</b>	Tris-buffered Saline containing 0.1% BSA and 0.09% Sodium Azide
<b>ISOTYPE</b>	IgG
<b>ORIGIN</b>	USA
<b>PRODUCTION PROCEDURES</b>	Antibody was affinity purified using an epitope specific to DDX46 immobilized on solid support.

The epitope recognized by A301-052A maps to a region between residue 981 and the C-terminus (residue 1031) of human DEAD (Asp-Glu-Ala-Asp) box polypeptide 46 using the numbering given in entry NP\_055644.2 (GeneID 9879).

Immunoglobulin concentration was determined by extinction coefficient: absorbance at 280 nm of 1.4 equals 1.0 mg of IgG.

**APPLICATIONS** Centrifuge tube to remove product from lid. Optimal working dilutions should be determined experimentally by the investigator. Prepare working dilution immediately before use.

Western Blot 1:2,000 - 1:10,000

Immunoprecipitation 2 - 5 µg/mg lysate

Immunohistochemistry 1:100 - 1:500. Epitope retrieval with citrate buffer pH 6.0 is recommended for FFPE tissue sections.

**APPLICATION NOTES** Western blot of immunoprecipitates performed using Normal Pig Serum (Cat. No. S100-020), Goat anti-Rabbit Light Chain HRP Conjugate (Cat. No. A120-113P) and 4-8% SDS-PAGE (link to IP-western blot protocol in Additional Info section below).

Western blot of lysates performed using standard western blot reagents and 4-8% SDS-PAGE.

**IHC HUMAN CONTROLS** Breast Carcinoma, Colon Carcinoma, Testicular Seminoma

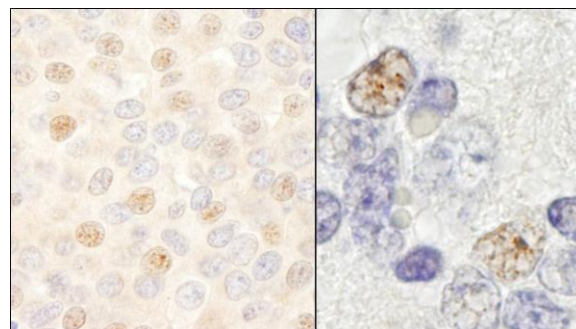
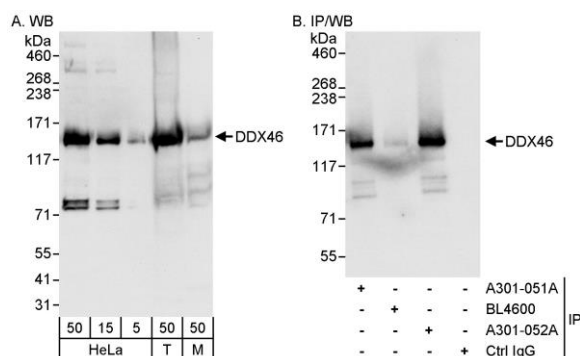
**IHC MOUSE CONTROLS** Teratoma

**ADDITIONAL INFO** <https://www.bethyl.com/product/A301-052A>

Use the link above to view SDS, a current list of citations, and other product specific information.

IP-western blot protocol: [https://www.bethyl.com/content/protocol\\_IP\\_WB](https://www.bethyl.com/content/protocol_IP_WB)

This document certifies that this product has met all of the quality control standards defined by Bethyl Laboratories, Inc.  
Eric McIntush, PhD | Chief Scientific Officer Date: June 21, 2019



**Detection of human and mouse DDX46 by western blot (h&m) and immunoprecipitation (h).** *Samples:* Whole cell lysate from HeLa (5, 15 and 50  $\mu$ g for WB; 1 mg for IP, 20% of IP loaded), HEK293T (T; 50  $\mu$ g) and mouse NIH 3T3 (M; 50  $\mu$ g) cells. *Antibodies:* Affinity purified rabbit anti-DDX46 antibody A301-052A used for WB at 0.04  $\mu$ g/ml (A) and 1  $\mu$ g/ml (B) and used for IP at 3  $\mu$ g/mg lysate. DDX46 was also immunoprecipitated by rabbit anti-DDX46 antibody A301-051A, which recognizes an upstream epitope. *Detection:* Chemiluminescence with exposure times of 10 seconds (A) and 3 seconds (B).

**Detection of human and mouse DDX46 by immunohistochemistry.** *Sample:* FFPE section of human breast carcinoma (left) and mouse teratoma (right). *Antibody:* Affinity purified rabbit anti-DDX46 (Cat. No. A301-052A) used at a dilution of 1:200 (1  $\mu$ g/ml). *Detection:* DAB