

SMARCC2/BAF170 Antibody

Rabbit Polyclonal

Antigen Affinity Purified

Protein ID NP_003066.2

Catalog No. A301-039A

GeneID 6601

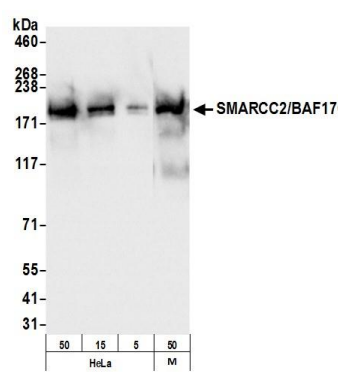
Lot No. A301-039A-1



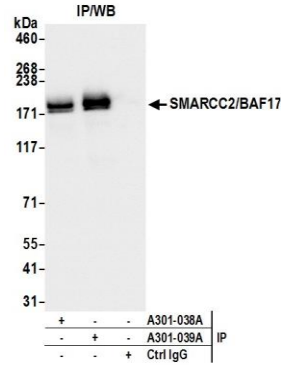
APPLICATIONS	WB, IP, IHC						
SPECIES REACTIVITY	Human, Mouse						
AMOUNT	100 µl						
CONCENTRATION	200 µg/ml						
STORAGE/SHELF LIFE	2 – 8° C / 1 year from date of receipt						
PHYSICAL STATE	Liquid						
BUFFER	Tris-buffered Saline containing 0.1% BSA and 0.09% Sodium Azide						
ISOTYPE	IgG						
ORIGIN	USA						
PRODUCTION PROCEDURES	<p>Antibody was affinity purified using an epitope specific to SMARCC2/BAF170 immobilized on solid support.</p> <p>The epitope recognized by A301-039A maps to a region between residue 1164 and the C-terminus (residue 1214) of human SWI/SNF related, matrix associated, actin dependent regulator of chromatin, subfamily c, member 2 (BRG1-associated factor 170) using the numbering given in entry NP_003066.2 (GeneID 6601).</p> <p>Immunoglobulin concentration was determined by extinction coefficient: absorbance at 280 nm of 1.4 equals 1.0 mg of IgG.</p>						
APPLICATIONS	<p>Centrifuge tube to remove product from lid. Optimal working dilutions should be determined experimentally by the investigator. Prepare working dilution immediately before use.</p> <table><tr><td>Western Blot</td><td>1:2,000 – 1:10,000</td></tr><tr><td>Immunoprecipitation</td><td>2 – 5 µg/mg lysate</td></tr><tr><td>Immunohistochemistry</td><td>1:200 – 1:1,000. Epitope retrieval with citrate buffer pH 6.0 is recommended for FFPE tissue sections.</td></tr></table>	Western Blot	1:2,000 – 1:10,000	Immunoprecipitation	2 – 5 µg/mg lysate	Immunohistochemistry	1:200 – 1:1,000. Epitope retrieval with citrate buffer pH 6.0 is recommended for FFPE tissue sections.
Western Blot	1:2,000 – 1:10,000						
Immunoprecipitation	2 – 5 µg/mg lysate						
Immunohistochemistry	1:200 – 1:1,000. Epitope retrieval with citrate buffer pH 6.0 is recommended for FFPE tissue sections.						
APPLICATION NOTES	<p>Western blot of immunoprecipitates performed using Normal Pig Serum (Cat. No. S100-020), Goat anti-Rabbit Light Chain HRP Conjugate (Cat. No. A120-113P) and 4-8% SDS-PAGE (link to IP-western blot protocol in Additional Info section below).</p> <p>Western blot of lysates performed using standard western blot reagents and 4-8% SDS-PAGE.</p>						
IHC HUMAN CONTROLS	Breast Carcinoma, Colon Carcinoma, Ovarian Carcinoma, Prostate Carcinoma, Skin Basal Cell Carcinoma, Testicular Seminoma						
IHC MOUSE CONTROLS	Squamous Cell Carcinoma						
ADDITIONAL INFO	<p>https://www.bethyl.com/product/A301-039A</p> <p>Use the link above to view SDS, a current list of citations, and other product specific information. IP-western blot protocol https://www.bethyl.com/content/protocol_IP_WB</p>						

This document certifies that this product has met all of the quality control standards defined by Bethyl Laboratories, Inc.
Eric McIntush, PhD | Chief Scientific Officer

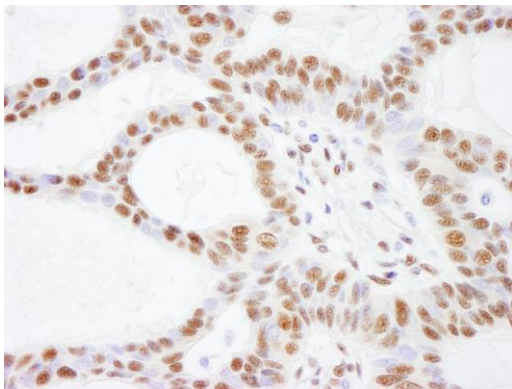
Date: October 17, 2019



Detection of human and mouse SMARCC2/BAF170 by western blot. *Samples:* Whole cell lysate from HeLa (5, 15, 50 µg) and mouse NIH 3T3 (M; 50 µg) cells. *Antibody:* Affinity purified rabbit anti-SMARCC2/BAF170 antibody A301-039A (lot A301-039A-1) used for WB at 0.04 µg/ml. *Detection:* Chemiluminescence with an exposure time of 1 second.



Detection of human SMARCC2/BAF170 by western blot of immunoprecipitates. *Samples:* Whole cell lysate (1.0 mg per IP reaction; 20% of IP loaded) from HeLa cells. *Antibodies:* Affinity purified rabbit anti-SMARCC2/BAF170 antibody A301-039A (lot A301-039A-1) used for IP at 3 µg per reaction. SMARCC2/BAF170 was also immunoprecipitated by rabbit anti-SMARCC2/BAF170 antibody A301-038A. For blotting immunoprecipitated SMARCC2/BAF170, A301-039A was used at 1 µg/ml. *Detection:* Chemiluminescence with an exposure time of 1 second.



Detection of human SMARCC2/BAF170 by immunohistochemistry. *Sample:* FFPE section of human skin basal cell carcinoma. *Antibody:* Affinity purified rabbit anti-SMARCC2/BAF170 (Cat. No. A301-039A Lot1) used at a dilution of 1:200 (1µg/ml). *Detection:* DAB