

RBM16 Antibody

Rabbit Polyclonal

Antigen Affinity Purified

Protein ID NP_055707.3

Catalog No. A301-037A

GeneID 22828

Lot No. A301-037A-1



APPLICATIONS	WB, IP, IHC
SPECIES REACTIVITY	Human, Mouse
AMOUNT	100 µl
CONCENTRATION	200 µg/ml
STORAGE/SHELF LIFE	2 - 8° C / 1 year from date of receipt
PHYSICAL STATE	Liquid
BUFFER	Tris-buffered Saline containing 0.1% BSA and 0.09% Sodium Azide
ISOTYPE	IgG
ORIGIN	USA
PRODUCTION PROCEDURES	Antibody was affinity purified using an epitope specific to RBM16 immobilized on solid support.

The epitope recognized by A301-037A maps to a region between residue 1221 and the C-terminus (residue 1271) of human RNA binding motif protein 16 using the numbering given in entry NP_055707.3 (GeneID 22828).

Immunoglobulin concentration was determined by extinction coefficient: absorbance at 280 nm of 1.4 equals 1.0 mg of IgG.

APPLICATIONS Centrifuge tube to remove product from lid. Optimal working dilutions should be determined experimentally by the investigator. Prepare working dilution immediately before use.

Western Blot 1:2,000 - 1:10,000

Immunoprecipitation 2 - 5 µg/mg lysate

Immunohistochemistry 1:500 - 1:2,000. Epitope retrieval with citrate buffer pH 6.0 is recommended for FFPE tissue sections.

APPLICATION NOTES Western blot of immunoprecipitates performed using Normal Pig Serum (Cat. No. S100-020), Goat anti-Rabbit Light Chain HRP Conjugate (Cat. No. A120-113P) and 4-8% SDS-PAGE (link to IP-western blot protocol in Additional Info section below).

IHC HUMAN CONTROLS Western blot of lysates performed using standard western blot reagents and 4-8% SDS-PAGE. Breast Carcinoma, Colon Carcinoma, Ovarian Carcinoma, Prostate Carcinoma, Skin Basal Cell Carcinoma

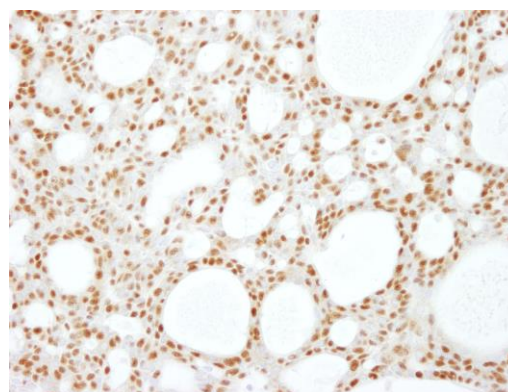
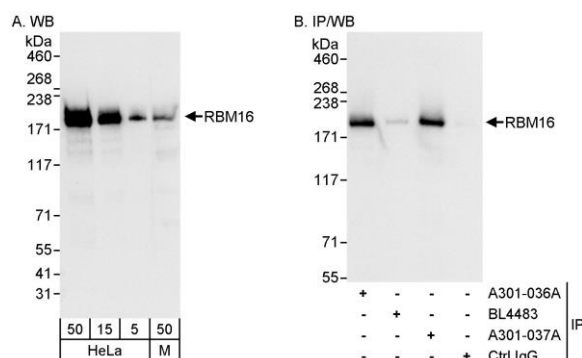
IHC MOUSE CONTROLS Colon Carcinoma CT26, Squamous Cell Carcinoma, Teratoma

ADDITIONAL INFO <https://www.bethyl.com/product/A301-037A>

Use the link above to view SDS, a current list of citations, and other product specific information.

IP-western blot protocol: https://www.bethyl.com/content/protocol_IP_WB

This document certifies that this product has met all of the quality control standards defined by Bethyl Laboratories, Inc.
Eric McIntush, PhD | Chief Scientific Officer Date: June 21, 2019



Detection of human and mouse RBM16 by western blot (h&m) and immunoprecipitation (h). *Samples:* Whole cell lysate from HeLa (5, 15 and 50 μ g for WB; 1 mg for IP, 20% of IP loaded) and mouse NIH 3T3 (M; 50 μ g) cells. *Antibodies:* Affinity purified rabbit anti-RBM16 antibody A301-037A used for WB at 0.04 μ g/ml (A) and 1 μ g/ml (B), and used for IP at 3 μ g/mg lysate. RBM16 was also immunoprecipitated by rabbit anti-RBM16 antibodies A301-036A and BL4483, which recognize upstream epitopes. *Detection:* Chemiluminescence with exposure times of 10 seconds (A) and 1 second (B).

Detection of human RBM16 by immunohistochemistry. *Sample:* FFPE section of human skin basal cell carcinoma. *Antibody:* Affinity purified rabbit anti-RBM16 (Cat. No. A301-037A Lot1) used at a dilution of 1:200 (1 μ g/ml). *Detection:* DAB