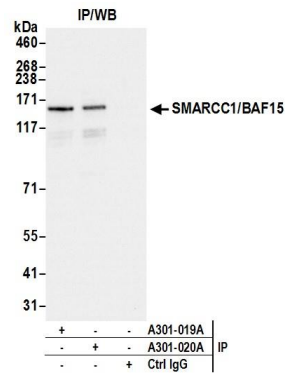


Detection of human and mouse SMARCC1/BAF155 by western blot. *Samples:* Whole cell lysate from HeLa (5, 15 and 50 µg), HEK293T (50 µg), and Jurkat (50 µg) cells prepared using NETN lysis buffer. *Antibody:* Affinity purified rabbit anti-SMARCC1/BAF155 antibody A301-020A (lot A301-020A-2) used for WB at 0.04 µg/ml. *Detection:* Chemiluminescence with an exposure time of 10 seconds.



Detection of human SMARCC1/BAF155 by western blot of immunoprecipitates. *Samples:* Whole cell lysate (1.0 mg per IP reaction; 20% of IP loaded) from HeLa cells prepared using NETN lysis buffer. *Antibodies:* Affinity purified rabbit anti-SMARCC1/BAF155 antibody A301-020A (lot A301-020A-2) used for IP at 3 µg per reaction. SMARCC1/BAF155 was also immunoprecipitated by rabbit anti-SMARCC1/BAF155 antibody A301-019A. For blotting immunoprecipitated SMARCC1/BAF155, A301-020A was used at 0.4 µg/ml. *Detection:* Chemiluminescence with an exposure time of 3 seconds.