

# SMARCC1 /BAF155 Antibody

Rabbit Polyclonal

Antigen Affinity Purified Protein ID NP\_003065.2

Catalog No. A301-019A GeneID 6599

Lot No. A301-019A-1



<b>APPLICATIONS</b>	WB, IP
<b>SPECIES REACTIVITY</b>	Human
<b>PRESUMED REACTIVITY</b>	Based on 100% sequence identity, this antibody is predicted to react with Mouse
<b>AMOUNT</b>	100 µl
<b>CONCENTRATION</b>	200 µg/ml
<b>STORAGE/SHELF LIFE</b>	2 – 8° C / 1 year from date of receipt
<b>PHYSICAL STATE</b>	Liquid
<b>BUFFER</b>	Tris-buffered Saline containing 0.1% BSA and 0.09% Sodium Azide
<b>ISOTYPE</b>	IgG
<b>ORIGIN</b>	USA
<b>PRODUCTION PROCEDURES</b>	Antibody was affinity purified using an epitope specific to SMARCC1 /BAF155 immobilized on solid support.

The epitope recognized by A301-019A maps to a region between residue 300 and 350 of human SWI/SNF related, matrix associated, actin dependent regulator of chromatin, subfamily c, member 1 /BRG1-associated factor 155 using the numbering given in entry NP\_003065.2 (GeneID 6599).

Immunoglobulin concentration was determined by extinction coefficient: absorbance at 280 nm of 1.4 equals 1.0 mg of IgG.

**APPLICATIONS** Centrifuge tube to remove product from lid. Optimal working dilutions should be determined experimentally by the investigator. Prepare working dilution immediately before use.

Western Blot 1:2,000 – 1:10,000

Immunoprecipitation 2 – 5 µg/mg lysate

**APPLICATION NOTES** Western blot of immunoprecipitates performed using Normal Pig Serum (Cat. No. S100-020), Goat anti-Rabbit Light Chain HRP Conjugate (Cat. No. A120-113P) and 4-8% SDS-PAGE (link to IP-western blot protocol in Additional Info section below).

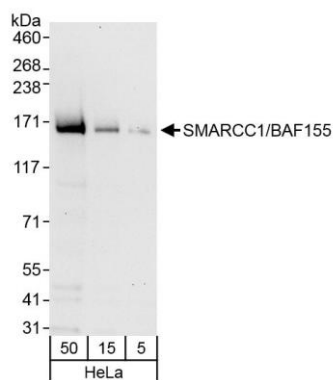
Western blot of lysates performed using standard western blot reagents and 4-8% SDS-PAGE.

**ADDITIONAL INFO** <https://www.bethyl.com/product/A301-019A>

Use the link above to view SDS, a current list of citations, and other product specific information.

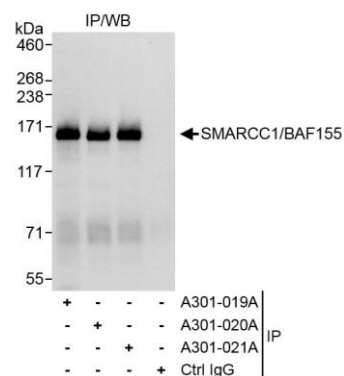
IP-western blot protocol [https://www.bethyl.com/content/protocol\\_IP\\_WB](https://www.bethyl.com/content/protocol_IP_WB)

This document certifies that this product has met all of the quality control standards defined by Bethyl Laboratories, Inc.  
Eric McIntush, PhD | Chief Scientific Officer Date: October 17, 2019



**Detection of human SMARCC1/BAF155 by western blot.**

*Samples:* Whole cell lysate (5, 15 and 50 µg) from HeLa cells. *Antibodies:* Affinity purified rabbit anti-SMARCC1/BAF155 antibody A301-019A (lot A301-019A-1) used for WB at 0.04 µg/ml. *Detection:* Chemiluminescence with exposure time of 30 seconds.



**Detection of human SMARCC1/BAF155 by western blot of immunoprecipitates.**

*Samples:* Whole cell lysate (1 mg for IP, 20% of IP loaded) from HeLa cells. *Antibodies:* Affinity purified rabbit anti-SMARCC1/BAF155 antibody A301-019A (lot A301-019A-1) used for IP at 3 µg/mg lysate. SMARCC1/BAF155 was also immunoprecipitated by rabbit anti-SMARCC1/BAF155 antibodies A301-020A and A301-021A, which recognize downstream epitopes. For blotting immunoprecipitated SMARCC1/BAF155, A301-019A was used at 1.0 µg/ml. *Detection:* Chemiluminescence with exposure time of 3 seconds.