

PAPOLA Antibody

Rabbit Polyclonal

Antigen Affinity Purified

Protein ID NP_116021.2

Catalog No. A301-010A

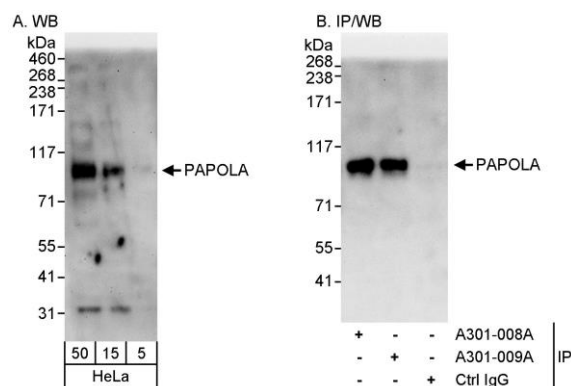
GeneID 10914

Lot No. A301-010A-1



APPLICATIONS	WB				
SPECIES REACTIVITY	Human				
PRESUMED REACTIVITY	Based on 100% sequence identity, this antibody is predicted to react with Mouse, X. laevis and Bovine				
AMOUNT	100 µl				
CONCENTRATION	200 µg/ml				
STORAGE/SHELF LIFE	2 - 8° C / 1 year from date of receipt				
PHYSICAL STATE	Liquid				
BUFFER	Tris-buffered Saline containing 0.1% BSA and 0.09% Sodium Azide				
ISOTYPE	IgG				
ORIGIN	USA				
PRODUCTION PROCEDURES	<p>Antibody was affinity purified using an epitope specific to PAPOLA immobilized on solid support.</p> <p>The epitope recognized by A301-010A maps to a region between residue 694 and the C-terminus (residue 744) of human poly(A) polymerase alpha using the numbering given in entry NP_116021.2 (GeneID 10914).</p> <p>Immunoglobulin concentration was determined by extinction coefficient: absorbance at 280 nm of 1.4 equals 1.0 mg of IgG.</p>				
APPLICATIONS	<p>Centrifuge tube to remove product from lid. Optimal working dilutions should be determined experimentally by the investigator. Prepare working dilution immediately before use.</p> <table><tr><td>Western Blot</td><td>1:2,000 - 1:10,000</td></tr><tr><td>Immunoprecipitation</td><td>Not recommended. Use rabbit anti-PAPOLA antibody A301-008A or A301-009A.</td></tr></table>	Western Blot	1:2,000 - 1:10,000	Immunoprecipitation	Not recommended. Use rabbit anti-PAPOLA antibody A301-008A or A301-009A.
Western Blot	1:2,000 - 1:10,000				
Immunoprecipitation	Not recommended. Use rabbit anti-PAPOLA antibody A301-008A or A301-009A.				
APPLICATION NOTES	Western blot of lysates performed using standard western blot reagents and 4-8% SDS-PAGE.				
ADDITIONAL INFO	<p>https://www.bethyl.com/product/A301-010A</p> <p>Use the link above to view SDS, a current list of citations, and other product specific information.</p>				

This document certifies that this product has met all of the quality control standards defined by Bethyl Laboratories, Inc.
Eric McIntush, PhD | Chief Scientific Officer Date: June 21, 2019



Detection of human PAPOLA by western blot and immunoprecipitation. *Samples:* Whole cell lysate (5, 15 and 50 µg for WB; 1 mg for IP, 20% of IP loaded) from HeLa cells. *Antibody:* Affinity purified rabbit anti-PAPOLA antibody A301-010A used for WB at 0.04 µg/ml (A) and 1 µg/ml (B). PAPOLA was immunoprecipitated by rabbit anti-PAPOLA antibodies A301-008A and A301-009A, which recognize upstream epitopes. *Detection:* Chemiluminescence with exposure times of 3 minutes (A) and 10 seconds (B).