

MKRN2 Antibody

Rabbit Polyclonal

Antigen Affinity Purified

Protein ID NP_054879.3

Catalog No. A300-991A

GeneID 23609

Lot No. A300-991A-1



APPLICATIONS	WB, IP, IHC
SPECIES REACTIVITY	Human, Mouse
AMOUNT	100 µl
CONCENTRATION	1000 µg/ml
STORAGE/SHELF LIFE	2 - 8° C / 1 year from date of receipt
PHYSICAL STATE	Liquid
BUFFER	Tris-citrate/phosphate buffer, pH 7 to 8 containing 0.09% Sodium Azide
ISOTYPE	IgG
ORIGIN	USA
PRODUCTION PROCEDURES	Antibody was affinity purified using an epitope specific to MKRN2 immobilized on solid support.

The epitope recognized by A300-991A maps to a region between residue 366 and the C-terminus (residue 416) of human makorin, ring finger protein, 2 using the numbering given in entry NP_054879.3 (GeneID 23609).

Immunoglobulin concentration was determined by extinction coefficient: absorbance at 280 nm of 1.4 equals 1.0 mg of IgG.

APPLICATIONS Centrifuge tube to remove product from lid. Optimal working dilutions should be determined experimentally by the investigator. Prepare working dilution immediately before use.

Western Blot 1:2,000 - 1:10,000

Immunoprecipitation 2 - 5 µg/mg lysate

Immunohistochemistry 1:1,000 - 1:5,000. Epitope retrieval with Tris-EDTA pH 9.0 is recommended for FFPE tissue sections.

APPLICATION NOTES Western blot of immunoprecipitates performed using Normal Pig Serum (Cat. No. S100-020), Goat anti-Rabbit Light Chain HRP Conjugate (Cat. No. A120-113P) and 4-20% SDS-PAGE (link to IP-western blot protocol in Additional Info section below).

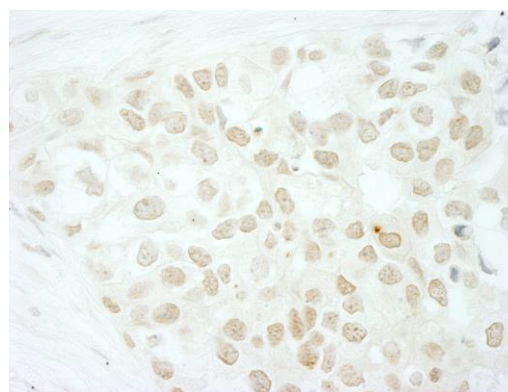
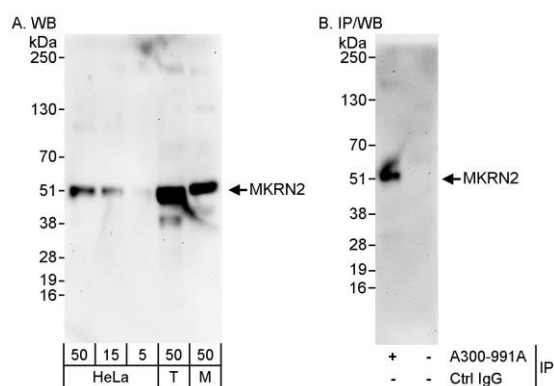
IHC HUMAN CONTROLS Western blot of lysates performed using standard western blot reagents and 4-20% SDS-PAGE. Breast Carcinoma, Ovarian Carcinoma

ADDITIONAL INFO <https://www.bethyl.com/product/A300-991A>

Use the link above to view SDS, a current list of citations, and other product specific information.

IP-western blot protocol: https://www.bethyl.com/content/protocol_IP_WB

This document certifies that this product has met all of the quality control standards defined by Bethyl Laboratories, Inc.
Eric McIntush, PhD | Chief Scientific Officer Date: June 21, 2019



Detection of human and mouse MKRN2 by western blot (h&m) and immunoprecipitation (h). *Samples:* Whole cell lysate from HeLa (5, 15 and 50 µg for WB; 1 mg for IP, 20% of IP loaded), HEK293T (T; 50 µg) and mouse NIH 3T3 (M; 50 µg) cells. *Antibody:* Affinity purified rabbit anti-MKRN2 antibody A300-991A used for WB at 0.1 µg/ml (A) and 1 µg/ml (B), and used for IP at 3 µg/mg lysate (B). *Detection:* Chemiluminescence with exposure times of 3 minutes (A and B).

Detection of human MKRN2 by immunohistochemistry.

Sample: FFPE section of human breast carcinoma.

Antibody: Affinity purified rabbit anti-MKRN2 (Cat. No. A300-991A Lot1) used at a dilution of 1:1,000 (1 µg/ml).

Detection: DAB