

# CBX3 Antibody

Rabbit Polyclonal

Antigen Affinity Purified

Protein ID NP\_009207.2

Catalog No. A300-984A

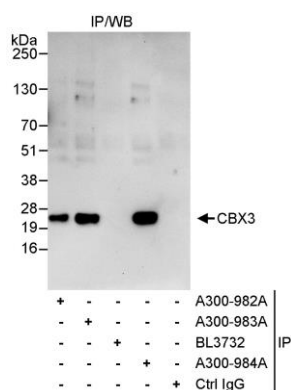
GeneID 11335

Lot No. A300-984A-1

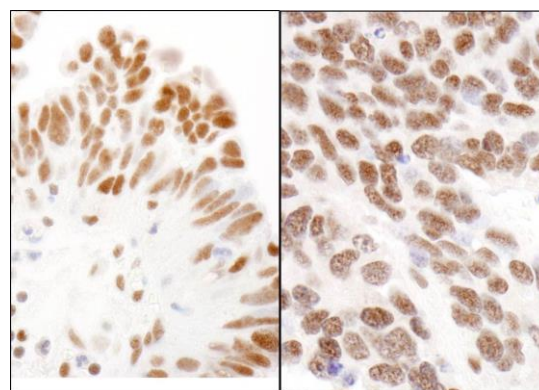


|                              |  |              |                 |                     |                    |                      |   |
|------------------------------|--|--------------|-----------------|---------------------|--------------------|----------------------|---|
| <b>APPLICATIONS</b>          | IP, IHC  |              |                 |                     |                    |                      |   |
| <b>SPECIES REACTIVITY</b>    | Human, Mouse   |              |                 |                     |                    |                      |   |
| <b>PRESUMED REACTIVITY</b>   | Based on 100% sequence identity, this antibody is predicted to react with Orangutan  |              |                 |                     |                    |                      |   |
| <b>AMOUNT</b>                | 100 µl   |              |                 |                     |                    |                      |   |
| <b>CONCENTRATION</b>         | 1000 µg/ml   |              |                 |                     |                    |                      |   |
| <b>STORAGE/SHELF LIFE</b>    | 2 - 8° C / 1 year from date of receipt   |              |                 |                     |                    |                      |   |
| <b>PHYSICAL STATE</b>        | Liquid   |              |                 |                     |                    |                      |   |
| <b>BUFFER</b>                | Tris-citrate/phosphate buffer, pH 7 to 8 containing 0.09% Sodium Azide   |              |                 |                     |                    |                      |   |
| <b>ISOTYPE</b>               | IgG  |              |                 |                     |                    |                      |   |
| <b>ORIGIN</b>                | USA  |              |                 |                     |                    |                      |   |
| <b>PRODUCTION PROCEDURES</b> | <p>Antibody was affinity purified using an epitope specific to CBX3 immobilized on solid support.</p> <p>The epitope recognized by A300-984A maps to a region between residue 133 and the C-terminus (residue 183) of human chromobox homolog 3 using the numbering given in entry NP_009207.2 (GeneID 11335).</p> <p>Immunoglobulin concentration was determined by extinction coefficient: absorbance at 280 nm of 1.4 equals 1.0 mg of IgG.</p>                                 |              |                 |                     |                    |                      |   |
| <b>APPLICATIONS</b>          | <p>Centrifuge tube to remove product from lid. Optimal working dilutions should be determined experimentally by the investigator. Prepare working dilution immediately before use.</p> <table><tr><td>Western Blot</td><td>Not recommended</td></tr><tr><td>Immunoprecipitation</td><td>2 - 5 µg/mg lysate</td></tr><tr><td>Immunohistochemistry</td><td>1:2,000 - 10,000. Epitope retrieval with citrate buffer pH 6.0 is recommended for FFPE tissue sections.</td></tr></table> | Western Blot | Not recommended | Immunoprecipitation | 2 - 5 µg/mg lysate | Immunohistochemistry | 1:2,000 - 10,000. Epitope retrieval with citrate buffer pH 6.0 is recommended for FFPE tissue sections. |
| Western Blot                 | Not recommended  |              |                 |                     |                    |                      |   |
| Immunoprecipitation          | 2 - 5 µg/mg lysate   |              |                 |                     |                    |                      |   |
| Immunohistochemistry         | 1:2,000 - 10,000. Epitope retrieval with citrate buffer pH 6.0 is recommended for FFPE tissue sections.  |              |                 |                     |                    |                      |   |
| <b>APPLICATION NOTES</b>     | Western blot of immunoprecipitates performed using Normal Pig Serum (Cat. No. S100-020), Goat anti-Rabbit Light Chain HRP Conjugate (Cat. No. A120-113P) and 4-12% SDS-PAGE (link to IP-western blot protocol in Additional Info section below).   |              |                 |                     |                    |                      |   |
| <b>IHC HUMAN CONTROLS</b>    | Breast Carcinoma, Colon Carcinoma, Laryngeal Squamous Cell Carcinoma, Ovarian Carcinoma, Prostate Carcinoma, Small Cell Lung Cancer, Testicular Seminoma   |              |                 |                     |                    |                      |   |
| <b>IHC MOUSE CONTROLS</b>    | Squamous Cell Carcinoma, Teratoma  |              |                 |                     |                    |                      |   |
| <b>ADDITIONAL INFO</b>       | <p><a href="https://www.bethyl.com/product/A300-984A">https://www.bethyl.com/product/A300-984A</a></p> <p>Use the link above to view SDS, a current list of citations, and other product specific information. IP-western blot protocol: <a href="https://www.bethyl.com/content/protocol_IP_WB">https://www.bethyl.com/content/protocol_IP_WB</a></p>   |              |                 |                     |                    |                      |   |

This document certifies that this product has met all of the quality control standards defined by Bethyl Laboratories, Inc.  
Eric McIntush, PhD | Chief Scientific Officer Date: June 21, 2019



**Detection of human CBX3 by western blot of immunoprecipitates.** *Samples:* Whole cell lysate (1 mg for IP, 20% of IP loaded) from HeLa cells. *Antibodies:* Affinity purified rabbit anti-CBX3 antibody A300-984A used for IP at 3  $\mu\text{g}/\text{mg}$  lysate. CBX3 was also immunoprecipitated by rabbit anti-CBX3 antibodies A300-982A and A300-983A, which recognize upstream epitopes. For blotting immunoprecipitated CBX3, A300-983A was used at 1  $\mu\text{g}/\text{ml}$ . *Detection:* Chemiluminescence with an exposure time of 30 seconds.



**Detection of human and mouse CBX3 by immunohistochemistry.** *Sample:* FFPE section of human ovarian carcinoma (left) and mouse teratoma (right). *Antibody:* Affinity purified rabbit anti-CBX3 (Cat. No. A300-984A Lot1) used at a dilution of 1:5,000 (0.2  $\mu\text{g}/\text{ml}$ ). *Detection:* DAB