

PPP2R3B Antibody

Rabbit Polyclonal

Antigen Affinity Purified

Protein ID NP_037371.2

Catalog No. A300-965A

GeneID 28227

Lot No. A300-965A-1



APPLICATIONS	IP
SPECIES REACTIVITY	Human
AMOUNT	100 µl
CONCENTRATION	1000 µg/ml
STORAGE/SHELF LIFE	2 - 8° C / 1 year from date of receipt
PHYSICAL STATE	Liquid
BUFFER	Tris-citrate/phosphate buffer, pH 7 to 8 containing 0.09% Sodium Azide
ISOTYPE	IgG
ORIGIN	USA
PRODUCTION PROCEDURES	Antibody was affinity purified using an epitope specific to PPP2R3B immobilized on solid support.

The epitope recognized by A300-965A maps to a region between residue 300 and 350 of human protein phosphatase 2 (formerly 2A), regulatory subunit B", beta using the numbering given in entry NP_037371.2 (GeneID 28227).

Immunoglobulin concentration was determined by extinction coefficient: absorbance at 280 nm of 1.4 equals 1.0 mg of IgG.

APPLICATIONS Centrifuge tube to remove product from lid. Optimal working dilutions should be determined experimentally by the investigator. Prepare working dilution immediately before use.

Western Blot Not recommended. Use rabbit anti-PPP2R3B antibody A300-966A.

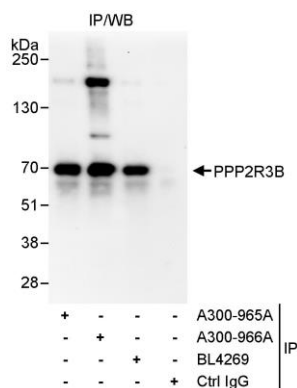
Immunoprecipitation 2 - 5 µg/mg lysate

APPLICATION NOTES Western blot of immunoprecipitates performed using Normal Pig Serum (Cat. No. S100-020), Goat anti-Rabbit Light Chain HRP Conjugate (Cat. No. A120-113P) and 4-20% SDS-PAGE (link to IP-western blot protocol in Additional Info section below).

ADDITIONAL INFO <https://www.bethyl.com/product/A300-965A>

Use the link above to view SDS, a current list of citations, and other product specific information. IP-western blot protocol: https://www.bethyl.com/content/protocol_IP_WB

This document certifies that this product has met all of the quality control standards defined by Bethyl Laboratories, Inc.
Eric McIntush, PhD | Chief Scientific Officer Date: June 21, 2019



Detection of human PPP2R3B by western blot of immunoprecipitates. *Samples:* Whole cell lysate (1 mg for IP, 20% of IP loaded) from HeLa cells. *Antibodies:* Affinity purified rabbit anti-PPP2R3B antibody A300-965A used for IP at 3 μ g/mg lysate. PPP2R3B was also immunoprecipitated by rabbit anti-PPP2R3B antibodies A300-966A and BL4269, which recognize downstream epitopes. For blotting immunoprecipitated PPP2R3B, A300-966A was used at 1 μ g/ml. *Detection:* Chemiluminescence with an exposure time of 30 seconds.