

# Timeless Antibody

Rabbit Polyclonal

Antigen Affinity Purified

Protein ID NP\_003911.1

Catalog No. A300-961A

GeneID 8914

Lot No. A300-961A-3



<b>APPLICATIONS</b>	WB, IP, IHC
<b>SPECIES REACTIVITY</b>	Human
<b>AMOUNT</b>	100 µl
<b>CONCENTRATION</b>	200 µg/ml
<b>STORAGE/SHELF LIFE</b>	2 – 8° C / 1 year from date of receipt
<b>PHYSICAL STATE</b>	Liquid
<b>BUFFER</b>	Tris-buffered Saline containing 0.1% BSA and 0.09% Sodium Azide
<b>ISOTYPE</b>	IgG
<b>ORIGIN</b>	USA
<b>PRODUCTION PROCEDURES</b>	Antibody was affinity purified using an epitope specific to Timeless immobilized on solid support.

The epitope recognized by A300-961A maps to a region between residue 1170 and the C-terminus (residue 1208) of human Timeless using the numbering given in entry NP\_003911.1 (GeneID 8914).

Immunoglobulin concentration was determined by extinction coefficient: absorbance at 280 nm of 1.4 equals 1.0 mg of IgG.

**APPLICATIONS** Centrifuge tube to remove product from lid. Optimal working dilutions should be determined experimentally by the investigator. Prepare working dilution immediately before use.

- Western Blot 1:2,000 – 1:10,000
- Immunoprecipitation 2 – 5 µg/mg lysate
- Immunohistochemistry 1:200 – 1:1,000. Epitope retrieval with citrate buffer pH 6.0 is recommended for FFPE tissue sections.

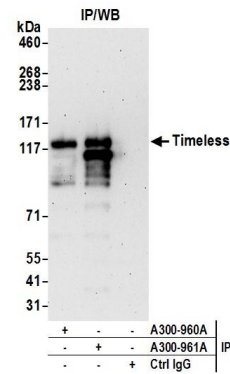
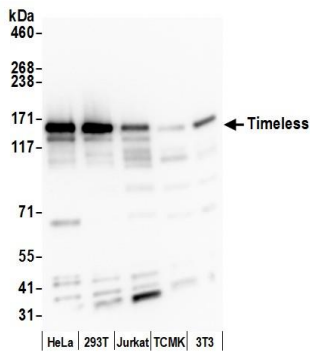
**APPLICATION NOTES** Western blot of immunoprecipitates performed using Normal Pig Serum (Cat. No. S100-020), Goat anti-Rabbit Light Chain HRP Conjugate (Cat. No. A120-113P) and 4-8% SDS-PAGE (link to IP-western blot protocol in Additional Info section below).

**IHC HUMAN CONTROLS** Western blot of lysates performed using standard western blot reagents and 4-8% SDS-PAGE. Breast Carcinoma, Colon Carcinoma, Ovarian Carcinoma, Testicular Seminoma

**ADDITIONAL INFO** <https://www.bethyl.com/product/A300-961A>  
Use the link above to view SDS, a current list of citations, and other product specific information.  
IP-western blot protocol: [https://www.bethyl.com/content/protocol\\_IP\\_WB](https://www.bethyl.com/content/protocol_IP_WB)

This document certifies that this product has met all of the quality control standards defined by Bethyl Laboratories, Inc.  
Eric McIntush, PhD | Chief Scientific Officer Date: June 24, 2019

For in vitro laboratory use only. Not for any clinical, therapeutic or diagnostic use in humans or animals. Not for human or animal consumption. This product may not be resold or modified for resale without the prior written approval of Bethyl Laboratories, Inc. The information provided in this data sheet is believed to be correct but does not purport to be all-inclusive and is intended to be used as a guide. Bethyl Laboratories, Inc. shall not be liable or responsible in any way for use of either this information or the material supplied. Disposal of hazardous material may be subject to federal, state or local laws or regulations.

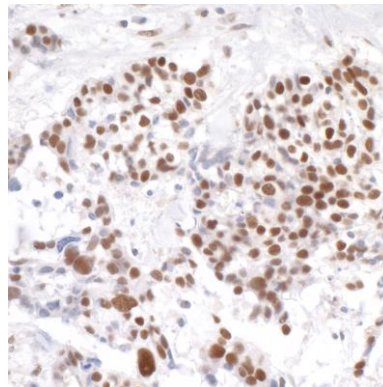


#### Detection of human and mouse Timeless by western blot.

**Samples:** Whole cell lysate (15 µg) from HeLa, HEK293T, Jurkat, mouse TCMK-1, and mouse NIH 3T3 cells prepared using NETN lysis buffer. **Antibody:** Affinity purified rabbit anti-Timeless antibody A300-961A (lot A300-961A lot 3) used for WB at 0.1 µg/ml. **Detection:** Chemiluminescence with an exposure time of 75 seconds.

#### Detection of human Timeless by western blot of immunoprecipitates.

**Samples:** Whole cell lysate (1.0 mg per IP reaction; 20% of IP loaded) from HeLa cells prepared using NETN lysis buffer. **Antibodies:** Affinity purified rabbit anti-Timeless antibody A300-961A (lot A300-961A-3) used for IP at 3 µg per reaction. Timeless was also immunoprecipitated by rabbit anti-Timeless antibody A300-960A. For blotting immunoprecipitated Timeless, A300-961A was used at 0.4 µg/ml. **Detection:** Chemiluminescence with an exposure time of 75 seconds.



#### Detection of human Timeless by immunohistochemistry.

**Sample:** FFPE section of human ovarian carcinoma. **Antibody:** Affinity purified rabbit anti-Timeless (Cat. No. A300-961A Lot3) used at a dilution of 1:1000 (0.2 µg/ml). **Detection:** DAB