

DOT1L Antibody

Rabbit Polyclonal

Antigen Affinity Purified

Protein ID NP_115871.1

Catalog No. A300-953A

GeneID 84444

Lot No. A300-953A-1



APPLICATIONS	WB, IP, IHC, ChIP-Seq
SPECIES REACTIVITY	Human
AMOUNT	100 µl
CONCENTRATION	200 µg/ml
STORAGE/SHELF LIFE	2 - 8° C / 1 year from date of receipt
PHYSICAL STATE	Liquid
BUFFER	Tris-buffered Saline containing 0.1% BSA and 0.09% Sodium Azide
ISOTYPE	IgG
ORIGIN	USA
PRODUCTION PROCEDURES	Antibody was affinity purified using an epitope specific to DOT1L immobilized on solid support.

The epitope recognized by A300-953A maps to a region between residue 1000 and 1050 of human DOT1-Like using the numbering given in entry NP_115871.1 (GeneID 84444).

Immunoglobulin concentration was determined by extinction coefficient: absorbance at 280 nm of 1.4 equals 1.0 mg of IgG.

APPLICATIONS Centrifuge tube to remove product from lid. Optimal working dilutions should be determined experimentally by the investigator. Prepare working dilution immediately before use.

Western Blot 1:2,000 - 1:10,000

Immunoprecipitation 2 - 5 µg/mg lysate

Immunohistochemistry 1:200 - 1:1,000. Epitope retrieval with Tris-EDTA pH 9.0 is recommended for FFPE tissue sections.

ChIP-Seq ChIP-Seq 4 µg/30 µg chromatin

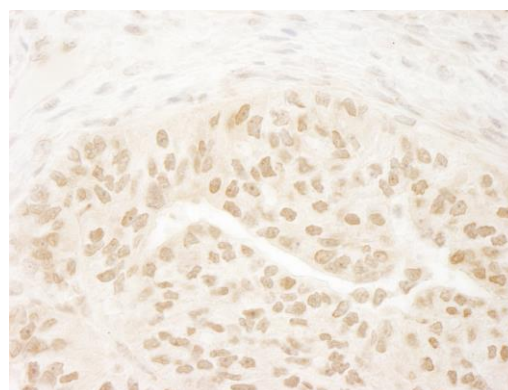
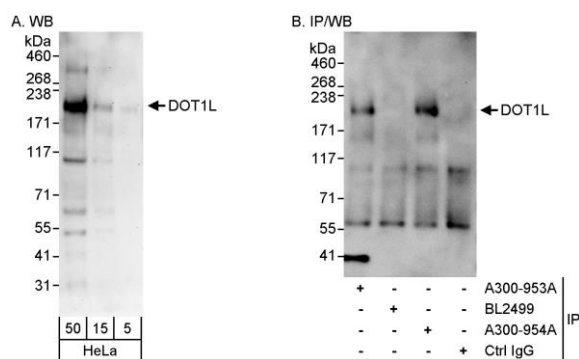
APPLICATION NOTES Western blot of immunoprecipitates performed using Normal Pig Serum (Cat. No. S100-020), Goat anti-Rabbit Light Chain HRP Conjugate (Cat. No. A120-113P) and 4-8% SDS-PAGE (link to IP-western blot protocol in Additional Info section below).

IHC HUMAN CONTROLS Western blot of lysates performed using standard western blot reagents and 4-8% SDS-PAGE. Breast Carcinoma, Colon Carcinoma, Ovarian Carcinoma, Prostate Carcinoma

ADDITIONAL INFO <https://www.bethyl.com/product/A300-953A>

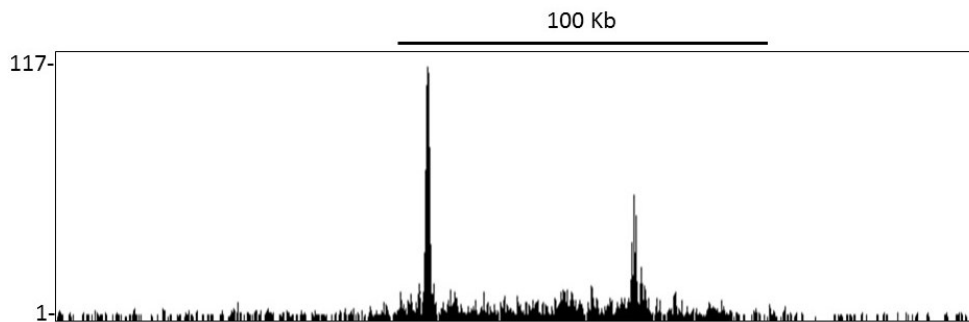
Use the link above to view SDS, a current list of citations, and other product specific information. IP-western blot protocol: https://www.bethyl.com/content/protocol_IP_WB

This document certifies that this product has met all of the quality control standards defined by Bethyl Laboratories, Inc.
Eric McIntush, PhD | Chief Scientific Officer Date: June 21, 2019



Detection of human DOT1L by western blot and immunoprecipitation. *Samples:* Whole cell lysate (5, 15 and 50 μg for WB; 1 mg for IP, 20% of IP loaded) from HeLa cells. *Antibodies:* Affinity purified rabbit anti-DOT1L antibody A300-953A used for WB at 0.04 μg/ml (A) and 1 μg/ml (B) and used for IP at 3 μg/mg lysate (B). DOT1L was also immunoprecipitated by rabbit anti-DOT1L antibody A300-954A, which recognizes a downstream epitope. *Detection:* Chemiluminescence with exposure times of 3 minutes (A) and 10 seconds (B).

Detection of human DOT1L by immunohistochemistry. *Sample:* FFPE section of human lung carcinoma. *Antibody:* Affinity purified rabbit anti-DOT1L (Cat. No. A300-953A Lot1) used at a dilution of 1:200 (1 μg/ml). *Detection:* DAB



Localization of DOT1L Binding Sites by ChIP–sequencing. Chromatin from KOPN–8 cell line was immunoprecipitated with anti–DOT1L antibody A300–953A and analyzed by DNA sequencing. The figure illustrates the peak distribution of DOT1L binding within a 250 Kb region of chromosome 10 as detected using anti–DOT1L antibody A300–953A. ChIP–seq validation performed by Active Motif, Carlsbad, CA.