

KIFC1 Antibody

Rabbit Polyclonal

Antigen Affinity Purified

Protein ID NP_002254.1

Catalog No. A300-952A

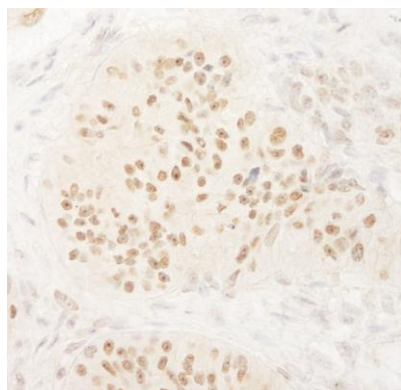
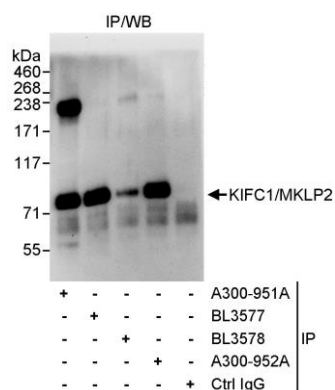
GeneID 3833

Lot No. A300-952A-1



APPLICATIONS	IP, IHC
SPECIES REACTIVITY	Human
AMOUNT	100 µl
CONCENTRATION	1000 µg/ml
STORAGE/SHELF LIFE	2 - 8° C / 1 year from date of receipt
PHYSICAL STATE	Liquid
BUFFER	Tris-citrate/phosphate buffer, pH 7 to 8 containing 0.09% Sodium Azide
ISOTYPE	IgG
ORIGIN	USA
PRODUCTION PROCEDURES	<p>Antibody was affinity purified using an epitope specific to KIFC1 immobilized on solid support.</p> <p>The epitope recognized by A300-952A maps to a region between residue 625 and 673 of human Kinesin Family Member C1 using the numbering given in entry NP_002254.1 (GeneID 3833).</p> <p>Immunoglobulin concentration was determined by extinction coefficient: absorbance at 280 nm of 1.4 equals 1.0 mg of IgG.</p>
APPLICATIONS	<p>Centrifuge tube to remove product from lid. Optimal working dilutions should be determined experimentally by the investigator. Prepare working dilution immediately before use.</p> <p>Western Blot Not recommended. Use rabbit anti-KIFC1 antibody A300-951A.</p> <p>Immunoprecipitation 2 - 5 µg/mg lysate</p> <p>Immunohistochemistry 1:1,000 - 1:5,000. Epitope retrieval with Tris-EDTA pH 9.0 is recommended for FFPE tissue sections.</p>
APPLICATION NOTES	Western blot of immunoprecipitates performed using Normal Pig Serum (Cat. No. S100-020), Goat anti-Rabbit Light Chain HRP Conjugate (Cat. No. A120-113P) and 4-8% SDS-PAGE (link to IP-western blot protocol in Additional Info section below).
IHC HUMAN CONTROLS	Non-Small Cell Lung Cancer, Ovarian Carcinoma
ADDITIONAL INFO	<p>https://www.bethyl.com/product/A300-952A</p> <p>Use the link above to view SDS, a current list of citations, and other product specific information.</p> <p>IP-western blot protocol: https://www.bethyl.com/content/protocol_IP_WB</p>

This document certifies that this product has met all of the quality control standards defined by Bethyl Laboratories, Inc.
Eric McIntush, PhD | Chief Scientific Officer Date: June 21, 2019



Detection of human KIFC1/MKLP2 by western blot of immunoprecipitates. *Samples:* Whole cell lysate (1 mg for IP, 20% of IP loaded) from HeLa cells. *Antibodies:* Affinity purified rabbit anti-KIFC1/MKLP2 antibody A300-952A used for IP at 3 µg/mg lysate. KIFC1/MKLP2 was also immunoprecipitated by rabbit anti-KIFC1/MKLP2 antibodies A300-951A, BL3577, and BL3578, which recognize upstream epitopes. For blotting immunoprecipitated KIFC1/MKLP2, A300-951A was used at 1 µg/ml. *Detection:* Chemiluminescence with an exposure time 30 seconds.

Detection of human KIFC1/MKLP2 by immunohistochemistry. *Sample:* FFPE section of human ovarian carcinoma. *Antibody:* Affinity purified rabbit anti-KIFC1/MKLP2 (Cat. No. A300-952A Lot1) used at a dilution of 1:5,000 (0.2µg/ml). *Detection:* DAB