

# DTL/CTD2 Antibody

Rabbit Polyclonal

Antigen Affinity Purified

Protein ID NP\_057532.1

Catalog No. A300-947A

GeneID 51514

Lot No. A300-947A-1



**APPLICATIONS** IP, IHC

**SPECIES REACTIVITY** Human

**AMOUNT** 100 µl

**CONCENTRATION** 1000 µg/ml

**STORAGE/SHELF LIFE** 2 – 8° C / 1 year from date of receipt

**PHYSICAL STATE** Liquid

**BUFFER** Tris-citrate/phosphate buffer, pH 7 to 8 containing 0.09% Sodium Azide

**ISOTYPE** IgG

**ORIGIN** USA

**PRODUCTION PROCEDURES** Antibody was affinity purified using an epitope specific to DTL/CDT2 immobilized on solid support.

The epitope recognized by A300-947A maps to a region between residue 375 and 425 of human Denticleless Homolog (Chromatin Licensing and DNA Replicating Factor 2) using the numbering given in entry NP\_057532.1 (GeneID 51514).

Immunoglobulin concentration was determined by extinction coefficient: absorbance at 280 nm of 1.4 equals 1.0 mg of IgG.

**APPLICATIONS** Centrifuge tube to remove product from lid. Optimal working dilutions should be determined experimentally by the investigator. Prepare working dilution immediately before use.

Western Blot Not recommended. Use rabbit anti-DTL/CDT2 antibody A300-948A.

Immunoprecipitation 2 – 5 µg/mg lysate

Immunohistochemistry 1:500 – 1:2,000. Epitope retrieval with Tris-EDTA pH 9.0 is recommended for FFPE tissue sections.

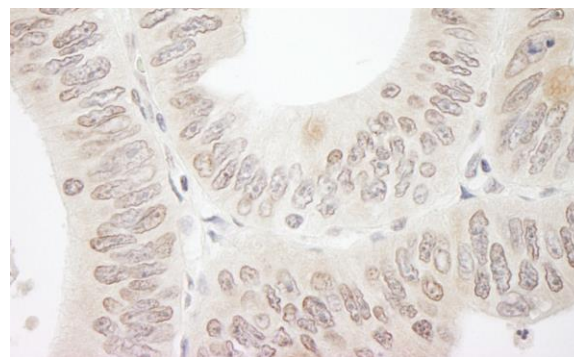
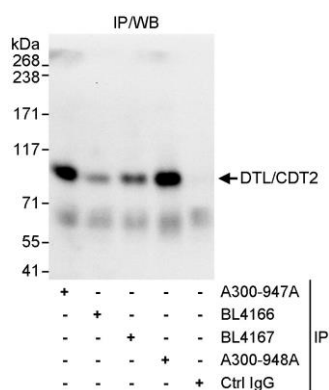
**APPLICATION NOTES** Western blot of immunoprecipitates performed using Normal Pig Serum (Cat. No. S100-020), Goat anti-Rabbit Light Chain HRP Conjugate (Cat. No. A120-113P) and 4-8% SDS-PAGE (link to IP-western blot protocol in Additional Info section below).

**IHC HUMAN CONTROLS** Colon Carcinoma, Ovarian Carcinoma

**ADDITIONAL INFO** <https://www.bethyl.com/product/A300-947A>

Use the link above to view SDS, a current list of citations, and other product specific information. IP-western blot protocol: [https://www.bethyl.com/content/protocol\\_IP\\_WB](https://www.bethyl.com/content/protocol_IP_WB)

This document certifies that this product has met all of the quality control standards defined by Bethyl Laboratories, Inc.  
Eric McIntush, PhD | Chief Scientific Officer Date: June 21, 2019



**Detection of human DTL/CTD2 by western blot of immunoprecipitates.** *Samples:* Whole cell lysate (1 mg for IP, 20% of IP loaded) from HeLa cells. *Antibodies:* Affinity purified rabbit anti-DTL/CTD2 antibody A300-947A used for IP at 3 µg/mg lysate. DTL/CTD2 was also immunoprecipitated by rabbit anti-DTL/CTD2 antibodies BL4166, BL4167 and A300-948A, which recognize downstream epitopes. For blotting immunoprecipitated DTL/CTD2, A300-948A was used at 1 µg/ml. *Detection:* Chemiluminescence with an exposure time 10 seconds.

**Detection of human DTL/CTD2 by immunohistochemistry.** *Sample:* FFPE section of human colon carcinoma. *Antibody:* Affinity purified rabbit anti-DTL/CTD2 (Cat. No. A300-947A Lot1) used at a dilution of 1:1,000 (1 µg/ml). *Detection:* DAB