

# USP24 Antibody

Rabbit Polyclonal

Antigen Affinity Purified Protein ID XP\_371254.5

Catalog No. A300-938A GeneID 23358

Lot No. A300-938A-2



<b>APPLICATIONS</b>	WB, IP
<b>SPECIES REACTIVITY</b>	Human
<b>PRESUMED REACTIVITY</b>	Based on 100% sequence identity, this antibody is predicted to react with Mouse
<b>AMOUNT</b>	100 µl
<b>CONCENTRATION</b>	1000 µg/ml
<b>STORAGE/SHELF LIFE</b>	2 – 8° C / 1 year from date of receipt
<b>PHYSICAL STATE</b>	Liquid
<b>BUFFER</b>	Tris-citrate/phosphate buffer, pH 7 to 8 containing 0.09% Sodium Azide
<b>ISOTYPE</b>	IgG
<b>ORIGIN</b>	USA
<b>PRODUCTION PROCEDURES</b>	Antibody was affinity purified using an epitope specific to USP24 immobilized on solid support.

The epitope recognized by A300-938A maps to a region between residue 2410 and the C-terminus (residue 2460) of human Ubiquitin Specific Peptidase 24 using the numbering given in entry XP\_371254.5 (GeneID 23358).

Immunoglobulin concentration was determined by extinction coefficient: absorbance at 280 nm of 1.4 equals 1.0 mg of IgG.

**APPLICATIONS** Centrifuge tube to remove product from lid. Optimal working dilutions should be determined experimentally by the investigator. Prepare working dilution immediately before use.

Western Blot 1:2,000 – 1:10,000

Immunoprecipitation 2 – 10 µg/mg lysate

**APPLICATION NOTES** Western blot of immunoprecipitates performed using Normal Pig Serum (Cat. No. S100-020), Goat anti-Rabbit Light Chain HRP Conjugate (Cat. No. A120-113P) and 4-8% SDS-PAGE (link to IP-western blot protocol in Additional Info section below).

Western blot of lysates performed using standard western blot reagents and 4-8% SDS-PAGE.

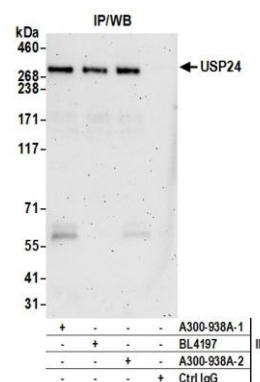
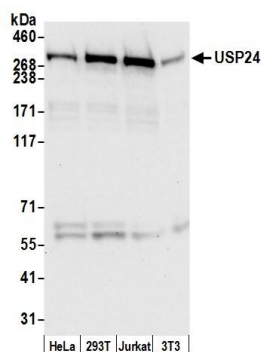
## ADDITIONAL INFO

<https://www.bethyl.com/product/A300-938A>

Use the link above to view SDS, a current list of citations, and other product specific information.

IP-western blot protocol: [https://www.bethyl.com/content/protocol\\_IP\\_WB](https://www.bethyl.com/content/protocol_IP_WB)

This document certifies that this product has met all of the quality control standards defined by Bethyl Laboratories, Inc.  
Eric McIntush, PhD | Chief Scientific Officer Date: June 21, 2019



**Detection of human and mouse USP24 by western blot.**  
*Samples:* Whole cell lysate (50 µg) from HeLa, HEK293T, Jurkat, and mouse NIH 3T3 cells prepared using NETN lysis buffer. *Antibody:* Affinity purified rabbit anti-USP24 antibody A300-938A (lot A300-938A-2) used for WB at 0.1 µg/ml. *Detection:* Chemiluminescence with an exposure time of 10 seconds.

**Detection of human USP24 by western blot of immunoprecipitates.** *Samples:* Whole cell lysate (1.0 mg per IP reaction; 20% of IP loaded) from HeLa and cells prepared using NETN lysis buffer. *Antibodies:* Affinity purified rabbit anti-USP24 antibody A300-938A (lot A300-938A-2) used for IP at 3 µg per reaction. USP24 was also immunoprecipitated by a previous lot of this antibody (lot A300-938A-1) and rabbit anti-USP24 antibody BL4197. For blotting immunoprecipitated USP24, A300-938A was used at 1 µg/ml. *Detection:* Chemiluminescence with an exposure time of 3 minutes.