

SPTBN1 Antibody

Rabbit Polyclonal

Antigen Affinity Purified	RefSeq ID	NP_003119.2
Catalog No. A300-936A	Uniprot ID	Q01082
Lot No. 3	GeneID	6711

APPLICATIONS	WB, IP, IHC
SPECIES REACTIVITY	Human, Mouse
AMOUNT	100 µl
CONCENTRATION	200 µg/ml
STORAGE/SHELF LIFE	2 – 8°C / 1 year from date of receipt
PHYSICAL STATE	Liquid
BUFFER	Tris-buffered Saline containing 0.1% BSA and 0.09% Sodium Azide
ISOTYPE	IgG
ORIGIN	USA
PRODUCTION PROCEDURES	Antibody was affinity purified using an epitope specific to SPTBN1 immobilized on solid support.

The epitope recognized by A300-936A maps to a region between residue 2100 and 2150 of human Spectrin Non-Erythroid Beta 1 using the numbering given in entry NP_003119.2 (GeneID 6711).

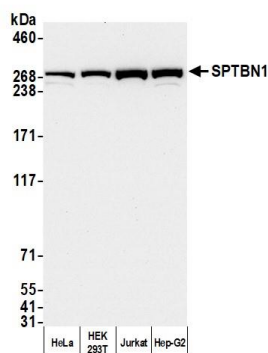
Immunoglobulin concentration was determined using Beer's Law where 1mg/mL IgG has an A280 of 1.4.

APPLICATIONS	Centrifuge tube to remove product from lid. Optimal working dilutions should be determined experimentally by the investigator. Prepare working dilution immediately before use.
	Western Blot 1:2,000 – 1:10,000
	Immunoprecipitation 2 – 10 µg/mg lysate
	Immunohistochemistry 1:100 to 1:500. Epitope retrieval with citrate buffer pH6.0 is recommended for FFPE tissue sections.

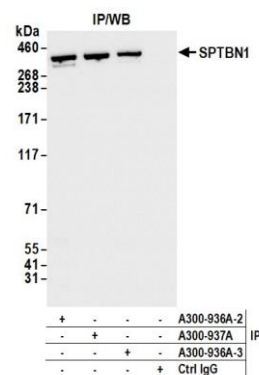
IHC HUMAN CONTROLS Colon Carcinoma, Ovarian Carcinoma

ADDITIONAL INFO <https://www.fortislife.com/p/A300-936A>
Use the link above to view SDS, a current list of citations, and other product specific information.

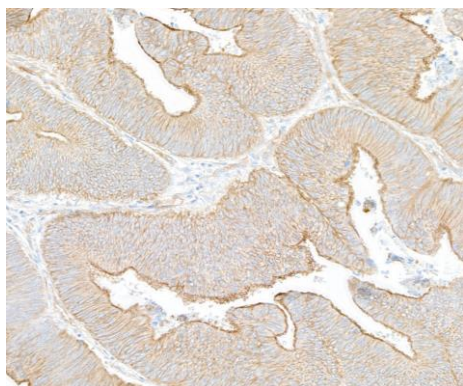
This document certifies that this product has met all of the quality control standards defined by Bethyl Laboratories, Inc.
Michael Spencer, PhD Date: November 29, 2023



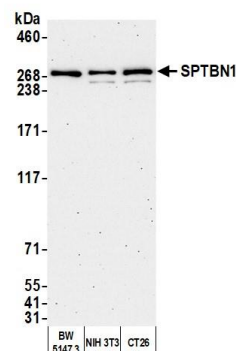
Detection of human SPTBN1 by western blot. *Samples:* Whole cell lysate (25 µg) from HeLa, HEK293T, Jurkat, and Hep-G2 cells prepared using NETN lysis buffer. *Antibody:* Affinity purified rabbit anti-SPTBN1 antibody (A300-936A lot 3) used for WB at 0.04 µg/ml. *Detection:* Chemiluminescence with an exposure time of 10 seconds.



Detection of human SPTBN1 by western blot of immunoprecipitates. *Samples:* Whole cell lysate (1.0 mg per IP reaction; 20% of IP loaded) from HEK293T cells prepared using NETN lysis buffer. *Antibodies:* Affinity purified rabbit anti-SPTBN1 antibody (A300-936A lot 3) used for IP at 6 µg per reaction. SPTBN1 was also immunoprecipitated by a previous lot of this antibody (A300-936A lot 2) and a second antibody against a different epitope of SPTBN1 (A300-937A). For blotting immunoprecipitated SPTBN1, A300-936A was used at 0.04 µg/ml. *Detection:* Chemiluminescence with an exposure time of 1 second.



Detection of human SPTBN1 by immunohistochemistry. *Sample:* FFPE section of human colon carcinoma. *Antibody:* Affinity purified rabbit anti-SPTBN1 (A300-936A Lot 3) used at a dilution of 1:200 (1 µg/ml). *Detection:* DAB



Detection of mouse SPTBN1 by western blot. *Samples:* Whole cell lysate (10 µg) from BW5147.3, NIH 3T3, and CT26 cells prepared using NETN lysis buffer. *Antibody:* Affinity purified rabbit anti-SPTBN1 antibody (A300-936A lot 3) used for WB at 0.04 µg/ml. *Detection:* Chemiluminescence with an exposure time of 75 seconds.