

# G9A/EHMT2 Antibody

Rabbit Polyclonal

Antigen Affinity Purified

Protein ID NP\_006700.2

Catalog No. A300-933A

GeneID 10919

Lot No. A300-933A-2



**APPLICATIONS** WB, IP, IHC

**SPECIES REACTIVITY** Human

**AMOUNT** 100 µl

**CONCENTRATION** 1000 µg/ml

**STORAGE/SHELF LIFE** 2 – 8° C / 1 year from date of receipt

**PHYSICAL STATE** Liquid

**BUFFER** Tris-citrate/phosphate buffer, pH 7 to 8 containing 0.09% Sodium Azide

**ISOTYPE** IgG

**ORIGIN** USA

**PRODUCTION PROCEDURES** Antibody was affinity purified using an epitope specific to G9A/EHMT2 immobilized on solid support.

The epitope recognized by A300-933A maps to a region between residue 1160 and the C-terminus (residue 1210) of human G9A (Euchromatic Histone-Lysine N-Methyltransferase 2) using the numbering given in entry NP\_006700.2 (GeneID 10919).

Immunoglobulin concentration was determined by extinction coefficient: absorbance at 280 nm of 1.4 equals 1.0 mg of IgG.

**APPLICATIONS** Centrifuge tube to remove product from lid. Optimal working dilutions should be determined experimentally by the investigator. Prepare working dilution immediately before use.

Western Blot 1:2,000 – 1:10,000

Immunoprecipitation 2 – 10 µg/mg lysate

Immunohistochemistry 1:1,000 – 1:5,000. Epitope retrieval with Tris-EDTA pH 9.0 is recommended for FFPE tissue sections.

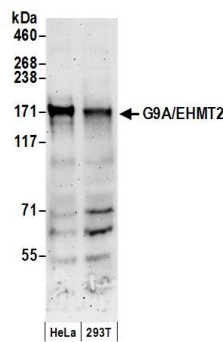
**APPLICATION NOTES** Western blot of immunoprecipitates performed using Normal Pig Serum (Cat. No. S100-020), Goat anti-Rabbit Light Chain HRP Conjugate (Cat. No. A120-113P) and 4-8% SDS-PAGE (link to IP-western blot protocol in Additional Info section below).

**IHC HUMAN CONTROLS** Western blot of lysates performed using standard western blot reagents and 4-8% SDS-PAGE. Breast Carcinoma

**ADDITIONAL INFO** <https://www.bethyl.com/product/A300-933A>

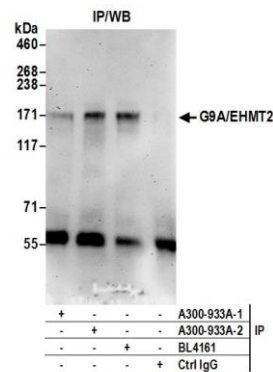
Use the link above to view SDS, a current list of citations, and other product specific information. IP-western blot protocol: [https://www.bethyl.com/content/protocol\\_IP\\_WB](https://www.bethyl.com/content/protocol_IP_WB)

This document certifies that this product has met all of the quality control standards defined by Bethyl Laboratories, Inc.  
Eric McIntush, PhD | Chief Scientific Officer Date: June 21, 2019



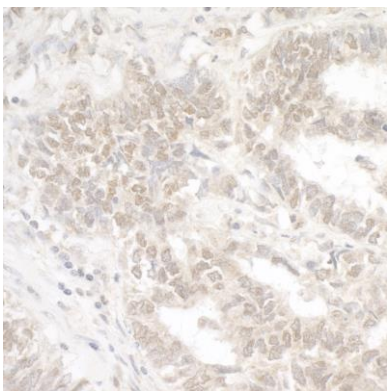
**Detection of human G9A/EHMT2 by western blot.**

*Samples:* Whole cell lysate (50 µg) from HeLa and HEK293T cells prepared using NETN lysis buffer. *Antibody:* Affinity purified rabbit anti-G9A/EHMT2 antibody A300-933A (lot A300-933A-2) used for WB at 0.1 µg/ml. *Detection:* Chemiluminescence with an exposure time of 3 minutes.



**Detection of human G9A/EHMT2 by western blot of immunoprecipitates.**

*Samples:* Whole cell lysate (0.5 or 1.0 mg per IP reaction; 20% of IP loaded) from HeLa cells prepared using NETN lysis buffer. *Antibody:* Affinity purified rabbit anti-G9A/EHMT2 antibody A300-933A (lot A300-933A-2) used for IP at 6 µg per reaction. G9A/EHMT2 was also immunoprecipitated by a previous lot of this antibody (A300-933A-1) and rabbit anti-G9A/EHMT2 antibody BL4161. For blotting immunoprecipitated G9A/EHMT2, A300-933A was used at 1 µg/ml. *Detection:* Chemiluminescence with an exposure time of 3 minutes.



**Detection of human G9A/EHMT2 by immunohistochemistry.** *Sample:* FFPE section of human lung carcinoma. *Antibody:* Affinity purified rabbit anti-G9A/EHMT2 (Cat. No. A300-933A Lot2) used at a dilution of 1:5,000 (0.2µg/ml). *Detection:* DAB