

Coronin 1 Antibody

Rabbit Polyclonal

Antigen Affinity Purified

Protein ID NP_009005.1

Catalog No. A300-931A

GeneID 11151

Lot No. A300-931A-1



APPLICATIONS	WB, IP, IHC
SPECIES REACTIVITY	Human, Mouse
PRESUMED REACTIVITY	Based on 100% sequence identity, this antibody is predicted to react with Rat and Bovine
AMOUNT	100 µl
CONCENTRATION	200 µg/ml
STORAGE/SHELF LIFE	2 - 8° C / 1 year from date of receipt
PHYSICAL STATE	Liquid
BUFFER	Tris-buffered Saline containing 0.1% BSA and 0.09% Sodium Azide
ISOTYPE	IgG
ORIGIN	USA
PRODUCTION PROCEDURES	Antibody was affinity purified using an epitope specific to Coronin 1 immobilized on solid support.

The epitope recognized by A300-931A maps to a region between residue 250 and 300 of human Coronin 1 (Coronin, Actin Binding Protein 1A) using the numbering given in entry NP_009005.1 (GeneID 11151).

Immunoglobulin concentration was determined by extinction coefficient: absorbance at 280 nm of 1.4 equals 1.0 mg of IgG.

APPLICATIONS Centrifuge tube to remove product from lid. Optimal working dilutions should be determined experimentally by the investigator. Prepare working dilution immediately before use.

Western Blot 1:2,000 - 1:10,000

Immunoprecipitation 2 - 5 µg/mg lysate

Immunohistochemistry 1:500 - 1:2,000. Epitope retrieval with citrate buffer pH 6.0 is recommended for FFPE tissue sections.

APPLICATION NOTES Western blot of immunoprecipitates performed using Normal Pig Serum (Cat. No. S100-020), Goat anti-Rabbit Light Chain HRP Conjugate (Cat. No. A120-113P) and 4-20% SDS-PAGE (link to IP-western blot protocol in Additional Info section below).

Western blot of lysates performed using standard western blot reagents and 4-20% SDS-PAGE.

IHC HUMAN CONTROLS Pancreatic Islet Cell Tumor, Stomach Adenocarcinoma

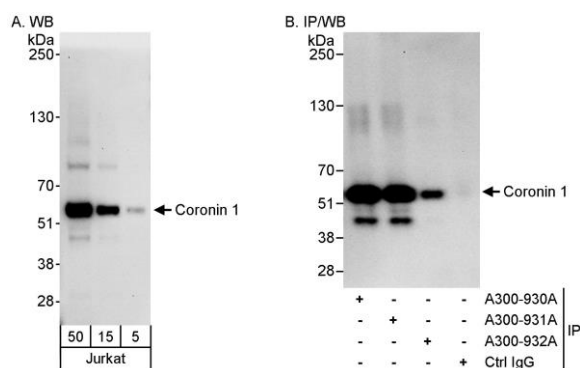
IHC MOUSE CONTROLS Fibroma, Teratoma

ADDITIONAL INFO <https://www.bethyl.com/product/A300-931A>

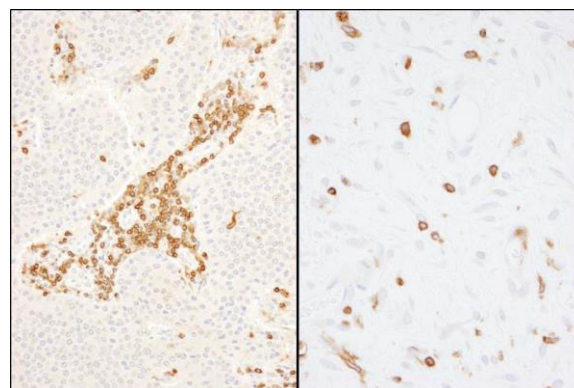
Use the link above to view SDS, a current list of citations, and other product specific information.

IP-western blot protocol: https://www.bethyl.com/content/protocol_IP_WB

This document certifies that this product has met all of the quality control standards defined by Bethyl Laboratories, Inc.
Eric McIntush, PhD | Chief Scientific Officer Date: June 21, 2019



Detection of human Coronin 1 by western blot and immunoprecipitation. *Samples:* Whole cell lysate (5, 15 and 50 µg for WB; 1 mg for IP, 20% of IP loaded) from Jurkat cells. *Antibodies:* Affinity purified rabbit anti-Coronin 1 antibody A300-931A used for WB at 0.04 µg/ml (A) and 1 µg/ml (B) and used for IP at 3 µg/mg lysate (B). Coronin 1 was also immunoprecipitated by rabbit anti-Coronin 1 antibodies A300-930A and A300-932A, which recognize other epitopes. *Detection:* Chemiluminescence with exposure times of 30 seconds (A) and 10 seconds (B).



Detection of human and mouse Coronin 1 by immunohistochemistry. *Sample:* FFPE section of human pancreatic islet cell tumor (left) and mouse fibroma (right). *Antibody:* Affinity purified rabbit anti-Coronin 1 (Cat. No. A300-931A Lot1) used at a dilution of 1:200 (1 µg/ml) and 1:1,000 (0.2 µg/ml). *Detection:* DAB