

USP14 Antibody

Rabbit Polyclonal

Antigen Affinity Purified

Protein ID NP_005142.1

Catalog No. A300-920A

GeneID 9097

Lot No. A300-920A-1



APPLICATIONS	WB, IP, IHC
SPECIES REACTIVITY	Human, Mouse
PRESUMED REACTIVITY	Based on 100% sequence identity, this antibody is predicted to react with Bovine
AMOUNT	100 µl
CONCENTRATION	1000 µg/ml
STORAGE/SHELF LIFE	2 - 8° C / 1 year from date of receipt
PHYSICAL STATE	Liquid
BUFFER	Tris-citrate/phosphate buffer, pH 7 to 8 containing 0.09% Sodium Azide
ISOTYPE	IgG
ORIGIN	USA
PRODUCTION PROCEDURES	Antibody was affinity purified using an epitope specific to USP14 immobilized on solid support.

The epitope recognized by A300-920A maps to a region between residue 450 and the C-terminus (residue 494) of human Ubiquitin Specific Peptidase 14 using the numbering given in entry NP_005142.1 (GeneID 9097).

Immunoglobulin concentration was determined by extinction coefficient: absorbance at 280 nm of 1.4 equals 1.0 mg of IgG.

APPLICATIONS Centrifuge tube to remove product from lid. Optimal working dilutions should be determined experimentally by the investigator. Prepare working dilution immediately before use.

Western Blot 1:2,000 - 1:10,000

Immunoprecipitation 2 - 5 µg/mg lysate

Immunohistochemistry 1:500 - 1:2,000. Epitope retrieval with citrate buffer pH 6.0 is recommended for FFPE tissue sections.

APPLICATION NOTES Western blot of immunoprecipitates performed using Normal Pig Serum (Cat. No. S100-020), Goat anti-Rabbit Light Chain HRP Conjugate (Cat. No. A120-113P) and 4-20% SDS-PAGE (link to IP-western blot protocol in Additional Info section below).

Western blot of lysates performed using standard western blot reagents and 4-20% SDS-PAGE.

IHC HUMAN CONTROLS Colon Carcinoma, Ovarian Carcinoma

ADDITIONAL INFO <https://www.bethyl.com/product/A300-920A>

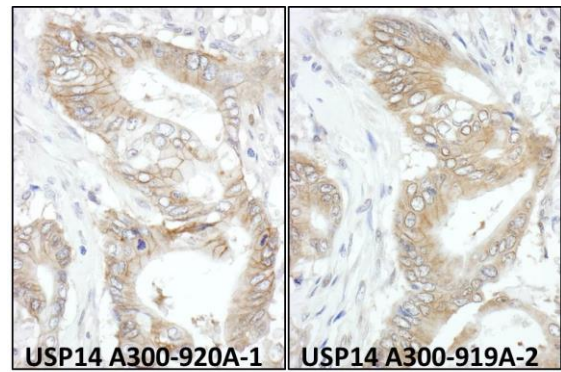
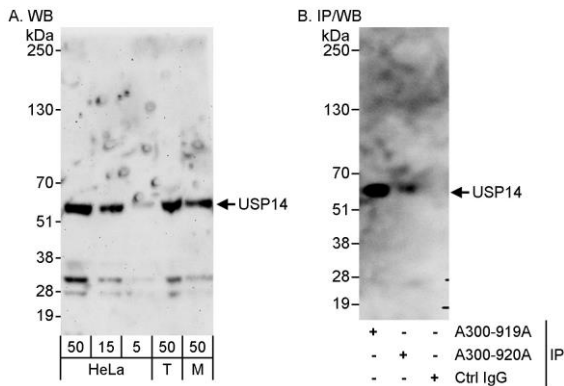
Use the link above to view SDS, a current list of citations, and other product specific information.

IP-western blot protocol: https://www.bethyl.com/content/protocol_IP_WB

This document certifies that this product has met all of the quality control standards defined by Bethyl Laboratories, Inc.

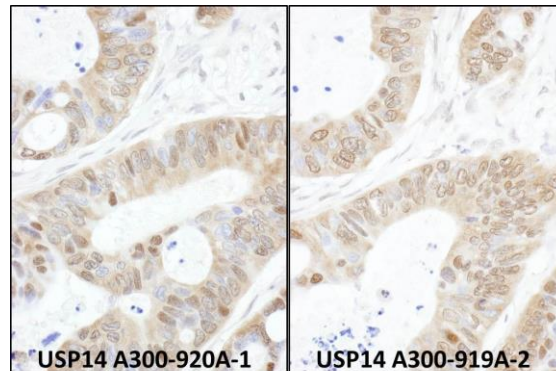
Eric McIntush, PhD | Chief Scientific Officer

Date: June 21, 2019



Detection of human and mouse USP14 by western blot (h&m) and immunoprecipitation (h). *Samples:* Whole cell lysate from HeLa (5, 15 and 50 µg for WB; 1 mg for IP, 20% of IP loaded), HEK293T (T; 50 µg), and mouse NIH 3T3 (M; 50 µg) cells. *Antibodies:* Affinity purified rabbit anti-USP14 antibody A300-920A used for WB at 0.1 µg/ml (A) and 1.0 µg/ml (B) and used for IP at 3 µg/mg lysate (B). USP14 was also immunoprecipitated by rabbit anti-USP14 antibody A300-919A, which recognizes an upstream epitope. *Detection:* Chemiluminescence with exposure times of 3 minutes (A) and 30 seconds (B).

Detection of human USP14 by immunohistochemistry. *Samples:* FFPE sections of human colon carcinoma. *Antibody:* Affinity purified rabbit anti-USP14 (Cat. No. A300-920A Lot1 – left and Cat. No. A300-919A Lot2 – right) used at a dilution of 1:1,000 (1 µg/ml). *Detection:* DAB.



Detection of human USP14 by immunohistochemistry. *Samples:* FFPE sections of human ovarian carcinoma. *Antibody:* Affinity purified rabbit anti-USP14 (Cat. No. A300-920A Lot1 – left and Cat. No. A300-919A Lot2 – right) used at a dilution of 1:1,000 (1 µg/ml). *Detection:* DAB