

# USP14 Antibody

Rabbit Polyclonal

Antigen Affinity Purified

Protein ID NP\_005142.1

Catalog No. A300-919A

GeneID 9097

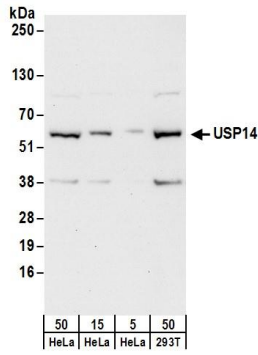
Lot No. A300-919A-2



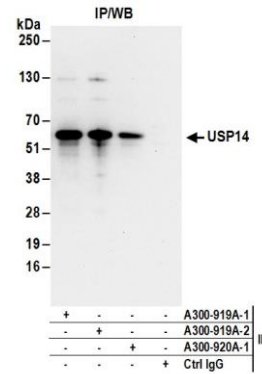
<b>APPLICATIONS</b>	WB, IP, IHC
<b>SPECIES REACTIVITY</b>	Human
<b>PRESUMED REACTIVITY</b>	Based on 100% sequence identity, this antibody is predicted to react with Chimpanzee
<b>AMOUNT</b>	100 µl
<b>CONCENTRATION</b>	1000 µg/ml
<b>STORAGE/SHELF LIFE</b>	2 - 8° C / 1 year from date of receipt
<b>PHYSICAL STATE</b>	Liquid
<b>BUFFER</b>	Tris-citrate/phosphate buffer, pH 7 to 8 containing 0.09% Sodium Azide
<b>ISOTYPE</b>	IgG
<b>ORIGIN</b>	USA
<b>PRODUCTION PROCEDURES</b>	<p>Antibody was affinity purified using an epitope specific to USP14 immobilized on solid support.</p> <p>The epitope recognized by A300-919A maps to a region between residue 350 and 400 of human Ubiquitin Specific Peptidase 14 using the numbering given in entry NP_005142.1 (GeneID 9097).</p> <p>Immunoglobulin concentration was determined by extinction coefficient: absorbance at 280 nm of 1.4 equals 1.0 mg of IgG.</p>
<b>APPLICATIONS</b>	<p>Centrifuge tube to remove product from lid. Optimal working dilutions should be determined experimentally by the investigator. Prepare working dilution immediately before use.</p> <p>Western Blot 1:2,000 - 1:10,000</p> <p>Immunoprecipitation 2 - 5 µg/mg lysate</p> <p>Immunohistochemistry 1:500 - 1:2,000. Epitope retrieval with citrate buffer pH 6.0 is recommended for FFPE tissue sections.</p>
<b>APPLICATION NOTES</b>	<p>Western blot of immunoprecipitates performed using Normal Pig Serum (Cat. No. S100-020), Goat anti-Rabbit Light Chain HRP Conjugate (Cat. No. A120-113P) and 4-20% SDS-PAGE (link to IP-western blot protocol in Additional Info section below).</p> <p>Western blot of lysates performed using standard western blot reagents and 4-20% SDS-PAGE.</p>
<b>IHC HUMAN CONTROLS</b>	Colon Carcinoma, Ovarian Carcinoma
<b>ADDITIONAL INFO</b>	<p><a href="https://www.bethyl.com/product/A300-919A">https://www.bethyl.com/product/A300-919A</a></p> <p>Use the link above to view SDS, a current list of citations, and other product specific information.</p> <p>IP-western blot protocol: <a href="https://www.bethyl.com/content/protocol_IP_WB">https://www.bethyl.com/content/protocol_IP_WB</a></p>

This document certifies that this product has met all of the quality control standards defined by Bethyl Laboratories, Inc.  
Eric McIntush, PhD | Chief Scientific Officer

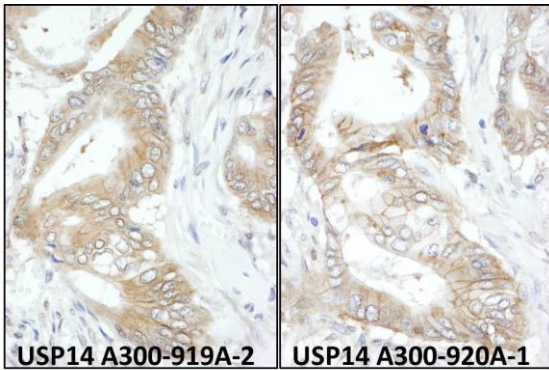
Date: June 21, 2019



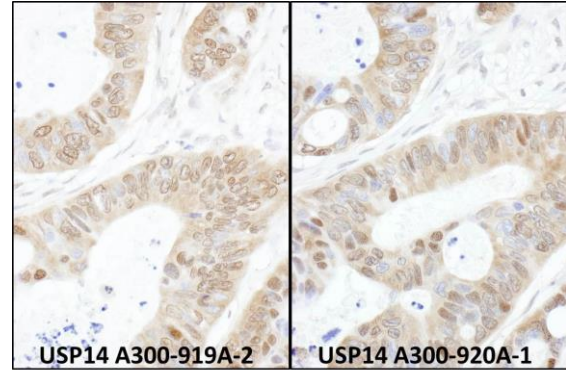
**Detection of human USP14 by western blot.** *Samples:* Whole cell lysate from HeLa (5, 15 and 50 μg) and HEK293T(50 μg) cells. *Antibodies:* Affinity purified rabbit anti-USP14 antibody A300-919A (lot A300-919A-2) used for WB at 0.04 μg/ml. *Detection:* Chemiluminescence with an exposure time of 30 seconds.



**Detection of human USP14 by western blot of immunoprecipitates.** *Samples:* Whole cell lysate (1 mg for IP; 20% of IP loaded) from HeLa cells. *Antibodies:* Affinity purified rabbit anti-USP14 antibody A300-919A (lot A300-919A-2) used for IP at 6 μg/mg lysate. USP14 was also immunoprecipitated by a previous lot of this antibody (lot A300-919A-1) and rabbit anti-USP14 antibody A300-920A. For blotting immunoprecipitated USP14, A300-919A was used at 1 μg/ml. *Detection:* Chemiluminescence with an exposure time of 30 seconds.



**Detection of human USP14 by immunohistochemistry.** *Samples:* FFPE sections of human colon carcinoma. *Antibody:* Affinity purified rabbit anti-USP14 (Cat. No. A300-919A Lot2 – left and Cat. No. A300-920A Lot1 – right) used at a dilution of 1:1,000 (1 μg/ml). *Detection:* DAB



**Detection of human USP14 by immunohistochemistry.** *Samples:* FFPE sections of human ovarian carcinoma. *Antibody:* Affinity purified rabbit anti-USP14 (Cat. No. A300-919A Lot2 – left and Cat. No. A300-920A Lot1 – right) used at a dilution of 1:1,000 (1 μg/ml). *Detection:* DAB