

BCAS3 Antibody

Rabbit Polyclonal

Antigen Affinity Purified

Protein ID BAB15156.1

Catalog No. A300-916A

GeneID 54828

Lot No. A300-916A-1



APPLICATIONS	WB, IP, IHC
SPECIES REACTIVITY	Human
PRESUMED REACTIVITY	Based on 100% sequence identity, this antibody is predicted to react with Mouse
AMOUNT	100 µl
CONCENTRATION	200 µg/ml
STORAGE/SHELF LIFE	2 - 8° C / 1 year from date of receipt
PHYSICAL STATE	Liquid
BUFFER	Tris-buffered Saline containing 0.1% BSA and 0.09% Sodium Azide
ISOTYPE	IgG
ORIGIN	USA
PRODUCTION PROCEDURES	Antibody was affinity purified using an epitope specific to BCAS2 immobilized on solid support.

The epitope recognized by A300-916A maps to a region between residue 870 and the C-terminus (residue 928) of human Breast Carcinoma Amplified Sequence 3 using the numbering given in entry BAB15156.1 (GeneID 54828).

Immunoglobulin concentration was determined by extinction coefficient: absorbance at 280 nm of 1.4 equals 1.0 mg of IgG.

APPLICATIONS Centrifuge tube to remove product from lid. Optimal working dilutions should be determined experimentally by the investigator. Prepare working dilution immediately before use.

Western Blot 1:2,000 - 1:10,000

Immunoprecipitation 2 - 5 µg/mg lysate

Immunohistochemistry 1:100 - 1:500. Epitope retrieval with citrate buffer pH 6.0 or Tris-EDTA pH 9.0 is recommended for FFPE tissue sections.

APPLICATION NOTES Western blot of immunoprecipitates performed using Normal Pig Serum (Cat. No. S100-020), Goat anti-Rabbit Light Chain HRP Conjugate (Cat. No. A120-113P) and 4-8% SDS-PAGE (link to IP-western blot protocol in Additional Info section below).

Western blot of lysates performed using standard western blot reagents and 4-8% SDS-PAGE.

IHC HUMAN CONTROLS Breast Carcinoma, Ovarian Carcinoma, Prostate Carcinoma

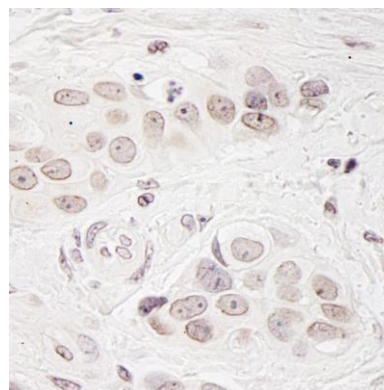
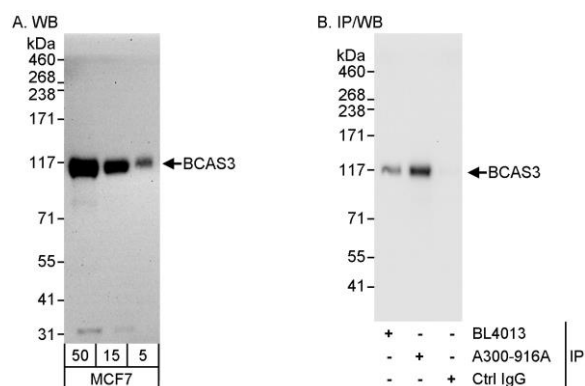
ADDITIONAL INFO <https://www.bethyl.com/product/A300-916A>

Use the link above to view SDS, a current list of citations, and other product specific information.

IP-western blot protocol: https://www.bethyl.com/content/protocol_IP_WB

This document certifies that this product has met all of the quality control standards defined by Bethyl Laboratories, Inc.
Eric McIntush, PhD | Chief Scientific Officer

Date: June 21, 2019



Detection of human BCAS3 by western blot and immunoprecipitation. *Samples:* Whole cell lysate (5, 15, and 50 µg for WB; 1 mg for IP, 20% of IP loaded) from MCF-7 cells. *Antibodies:* Affinity purified rabbit anti-BCAS3 antibody A300-916A used for WB at 0.04 µg/ml (A) and 1 µg/ml (B) and used for IP at 3 µg/mg lysate (B). BCAS3 was also immunoprecipitated by rabbit anti-BCAS3 antibody BL4013, which recognizes an upstream epitope. *Detection:* Chemiluminescence with exposure times of 1 minute (A) and 1 second (B).

Detection of human BCAS3 by immunohistochemistry. *Sample:* FFPE section of human breast carcinoma. *Antibody:* Affinity purified rabbit anti-BCAS3 (Cat. No. A300-916A Lot1) used at a dilution of 1:200 (1 µg/ml). *Detection:* DAB