

BCAS2 Antibody

Rabbit Polyclonal

Antigen Affinity Purified

Protein ID NP_005863.1

Catalog No. A300-915A

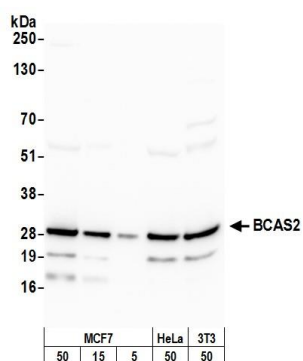
GeneID 10286

Lot No. A300-915A-2



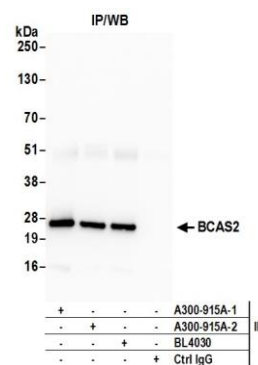
APPLICATIONS	WB, IP, IHC
SPECIES REACTIVITY	Human, Mouse
PRESUMED REACTIVITY	Based on 100% sequence identity, this antibody is predicted to react with Zebrafish and Orangutan
AMOUNT	100 µl
CONCENTRATION	1000 µg/ml
STORAGE/SHELF LIFE	2 - 8° C / 1 year from date of receipt
PHYSICAL STATE	Liquid
BUFFER	Tris-citrate/phosphate buffer, pH 7 to 8 containing 0.09% Sodium Azide
ISOTYPE	IgG
ORIGIN	USA
PRODUCTION PROCEDURES	<p>Antibody was affinity purified using an epitope specific to BCAS2 immobilized on solid support.</p> <p>The epitope recognized by A300-915A maps to a region between residue 175 and the C-terminus (residue 225) of human Breast Cancer Amplified Sequence 2 using the numbering given in entry NP_005863.1 (GeneID 10286).</p> <p>Immunoglobulin concentration was determined by extinction coefficient: absorbance at 280 nm of 1.4 equals 1.0 mg of IgG.</p>
APPLICATIONS	<p>Centrifuge tube to remove product from lid. Optimal working dilutions should be determined experimentally by the investigator. Prepare working dilution immediately before use.</p> <p>Western Blot 1:2,000 - 1:10,000</p> <p>Immunoprecipitation 2 - 10 µg/mg lysate</p> <p>Immunohistochemistry 1:1,000 - 1:5,000. Epitope retrieval with citrate buffer pH 6.0 is recommended for FFPE tissue sections.</p>
APPLICATION NOTES	<p>Western blot of immunoprecipitates performed using Normal Pig Serum (Cat. No. S100-020), Goat anti-Rabbit Light Chain HRP Conjugate (Cat. No. A120-113P) and 4-20% SDS-PAGE (link to IP-western blot protocol in Additional Info section below).</p> <p>Western blot of lysates performed using standard western blot reagents and 4-20% SDS-PAGE.</p>
IHC HUMAN CONTROLS	Anaplastic Thyroid Carcinoma, Breast Carcinoma, Laryngeal Squamous Cell Carcinoma, Ovarian Carcinoma, Pancreatic Islet Cell Tumor, Prostate Carcinoma, Small Cell Lung Cancer
IHC MOUSE CONTROLS	Plasmacytoma
ADDITIONAL INFO	<p>https://www.bethyl.com/product/A300-915A</p> <p>Use the link above to view SDS, a current list of citations, and other product specific information.</p> <p>IP-western blot protocol: https://www.bethyl.com/content/protocol_IP_WB</p>

This document certifies that this product has met all of the quality control standards defined by Bethyl Laboratories, Inc.
Eric McIntush, PhD | Chief Scientific Officer Date: June 21, 2019



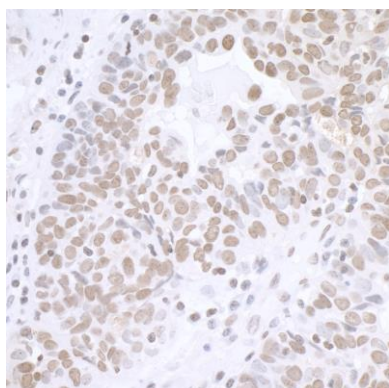
Detection of human and mouse BCAS2 by western blot.

Samples: Whole cell lysate from MCF-7 (5, 15 and 50 µg), and HeLa (50µg), and mouse NIH 3T3 (50µg) cells prepared using NETN lysis buffer. *Antibody:* Affinity purified rabbit anti-BCAS2 antibody A300-915A (lot A300-915A-2) used for WB at 0.1 µg/ml. *Detection:* Chemiluminescence with an exposure time of 30 seconds.



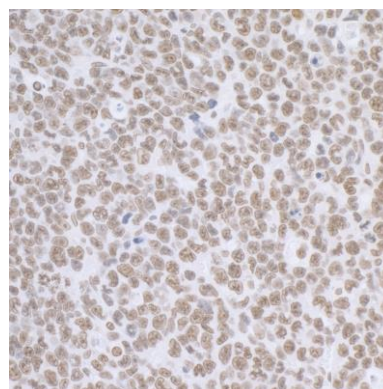
Detection of human BCAS2 by western blot of immunoprecipitates.

Samples: Whole cell lysate (0.5 or 1.0 mg per IP reaction; 20% of IP loaded) from MCF-7 cells prepared using NETN lysis buffer. *Antibodies:* Affinity purified rabbit anti-BCAS2 antibody A300-915A (lot A300-915A-2) used for IP at 6 µg per reaction. BCAS2 was also immunoprecipitated by a previous lot of this antibody (lot A300-915A-1) and rabbit anti-BCAS2 antibody BL4030. For blotting immunoprecipitated BCAS2, A300-915A was used at 1 µg/ml. *Detection:* Chemiluminescence with an exposure time of 30 seconds.



Detection of human BCAS2 by immunohistochemistry.

Sample: FFPE section of human ovarian carcinoma. *Antibody:* Affinity purified rabbit anti-BCAS2 (Cat. No. A300-915A Lot2) used at a dilution of 1:1,000 (1 µg/ml). *Detection:* DAB



Detection of mouse BCAS2 by immunohistochemistry.

Sample: FFPE section of mouse plasmacytoma. *Antibody:* Affinity purified rabbit anti-BCAS2 (Cat. No. A300-915A Lot2) used at a dilution of 1:1,000 (1 µg/ml). *Detection:* DAB