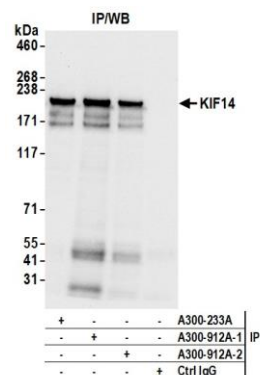
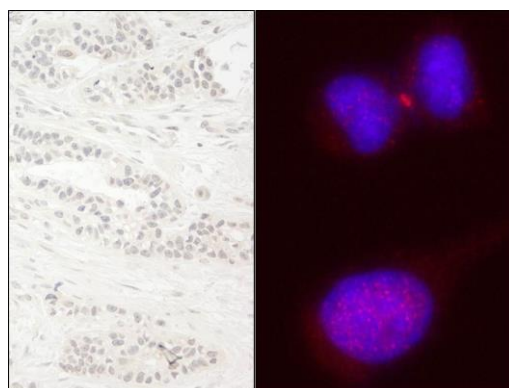


Detection of human KIF14 by western blot. *Samples:* Whole cell lysate (25 μ g) from HeLa, HEK293T, K-562, and Jurkat cells prepared using NETN lysis buffer. *Antibody:* Affinity purified rabbit anti-KIF14 antibody (A300-912A lot 2) used for WB at 0.1 μ g/ml. *Detection:* Chemiluminescence with an exposure time of 30 seconds.



Detection of human KIF14 by western blot of immunoprecipitates. *Samples:* Whole cell lysate (1.0 mg per IP reaction; 20% of IP loaded) from HeLa cells prepared using NETN lysis buffer. *Antibodies:* Affinity purified rabbit anti-KIF14 antibody (A300-912A lot 2) used for IP at 6 μ g per reaction. KIF14 was also immunoprecipitated by a previous lot of this antibody (A300-912A lot 1) and a second antibody against a different epitope of KIF14 (A300-233A). For blotting immunoprecipitated KIF14, A300-912A was used at 0.04 μ g/ml. *Detection:* Chemiluminescence with an exposure time of 3 seconds.



Detection of human KIF14 by immunohistochemistry and immunocytochemistry. *Sample:* FFPE section of human breast carcinoma (left) and formaldehyde-fixed HeLa cells (right). *Antibody:* Affinity purified rabbit anti-KIF14 (Cat. No. A300-912A Lot1) used at a dilution of 1:200 (1 μ g/ml) and 1:100 (2 μ g/ml). *Detection:* DAB (left) and red-fluorescent goat anti-rabbit IgG highly cross-adsorbed Antibody used at a dilution of 1:100 (right).