

MTA1 Antibody

Rabbit Polyclonal

Antigen Affinity Purified

Protein ID NP_004680.1

Catalog No. A300-911A

GeneID 9112

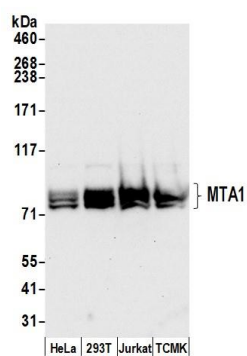
Lot No. A300-911A-2



APPLICATIONS	WB, IP, IHC						
SPECIES REACTIVITY	Human, Mouse						
PRESUMED REACTIVITY	Based on 100% sequence identity, this antibody is predicted to react with Rat						
AMOUNT	100 µl						
CONCENTRATION	200 µg/ml						
STORAGE/SHELF LIFE	2 - 8° C / 1 year from date of receipt						
PHYSICAL STATE	Liquid						
BUFFER	Tris-buffered Saline containing 0.1% BSA and 0.09% Sodium Azide						
ISOTYPE	IgG						
ORIGIN	USA						
PRODUCTION PROCEDURES	<p>Antibody was affinity purified using an epitope specific to MTA1 immobilized on solid support.</p> <p>The epitope recognized by A300-911A maps to a region between residue 665 and the C-terminus (residue 715) of human Metastasis Associated 1 using the numbering given in entry NP_004680.1 (GeneID 9112).</p> <p>Immunoglobulin concentration was determined by extinction coefficient: absorbance at 280 nm of 1.4 equals 1.0 mg of IgG.</p>						
APPLICATIONS	<p>Centrifuge tube to remove product from lid. Optimal working dilutions should be determined experimentally by the investigator. Prepare working dilution immediately before use.</p> <table><tr><td>Western Blot</td><td>1:2,000 - 1:10,000</td></tr><tr><td>Immunoprecipitation</td><td>5 - 10 µg/mg lysate</td></tr><tr><td>Immunohistochemistry</td><td>1:500 - 1:2,000. Epitope retrieval with citrate buffer pH 6.0 is recommended for FFPE tissue sections.</td></tr></table>	Western Blot	1:2,000 - 1:10,000	Immunoprecipitation	5 - 10 µg/mg lysate	Immunohistochemistry	1:500 - 1:2,000. Epitope retrieval with citrate buffer pH 6.0 is recommended for FFPE tissue sections.
Western Blot	1:2,000 - 1:10,000						
Immunoprecipitation	5 - 10 µg/mg lysate						
Immunohistochemistry	1:500 - 1:2,000. Epitope retrieval with citrate buffer pH 6.0 is recommended for FFPE tissue sections.						
APPLICATION NOTES	<p>Western blot of immunoprecipitates performed using Normal Pig Serum (Cat. No. S100-020), Goat anti-Rabbit Light Chain HRP Conjugate (Cat. No. A120-113P) and 4-8% SDS-PAGE (link to IP-western blot protocol in Additional Info section below).</p> <p>Western blot of lysates performed using standard western blot reagents and 4-8% SDS-PAGE.</p>						
IHC HUMAN CONTROLS	Bladder Cell Carcinoma, Breast Carcinoma, Colon Carcinoma, Non-Small Cell Lung Cancer, Prostate Carcinoma, Testicular Seminoma						
IHC MOUSE CONTROLS	Squamous Cell Carcinoma, Teratoma						
ADDITIONAL INFO	<p>https://www.bethyl.com/product/A300-911A</p> <p>Use the link above to view SDS, a current list of citations, and other product specific information.</p> <p>IP-western blot protocol: https://www.bethyl.com/content/protocol_IP_WB</p>						

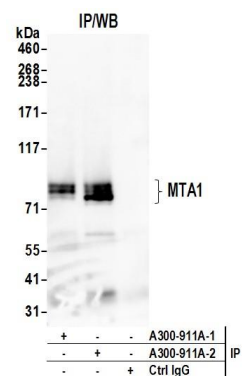
This document certifies that this product has met all of the quality control standards defined by Bethyl Laboratories, Inc.
Eric McIntush, PhD | Chief Scientific Officer

Date: June 21, 2019



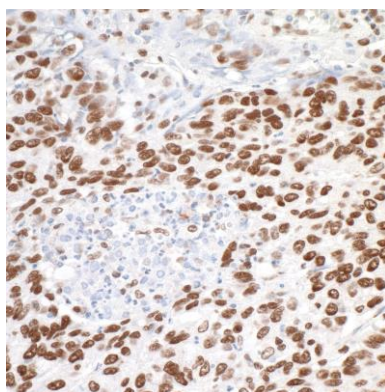
Detection of human and mouse MTA1 by western blot.

Samples: Whole cell lysate (50 µg) from HeLa, HEK293T, Jurkat, and mouse TCMK-1 cells prepared using NETN lysis buffer. **Antibody:** Affinity purified rabbit anti-MTA1 antibody A300-911A (lot A300-911A-2) used for WB at 0.1 µg/ml. **Detection:** Chemiluminescence with an exposure time of 10 seconds.



Detection of human MTA1 by western blot of immunoprecipitates.

Samples: Whole cell lysate (1.0 mg per IP reaction; 20% of IP loaded) from HeLa cells prepared using NETN lysis buffer. **Antibodies:** Affinity purified rabbit anti-MTA1 antibody A300-911A (lot A300-911A-2) used for IP at 6 µg per reaction. MTA1 was also immunoprecipitated by a previous lot of this antibody (lot A300-911A-1). For blotting immunoprecipitated MTA1, A300-911A was used at 1 µg/ml. **Detection:** Chemiluminescence with an exposure time of 3 minutes.



Detection of human MTA1 by immunohistochemistry.

Sample: FFPE section of human non-small cell lung cancer. **Antibody:** Affinity purified rabbit anti-MTA1 (Cat. No. A300-911A Lot 2) used at a dilution of 1:1,000 (0.2 µg/ml). **Detection:** DAB