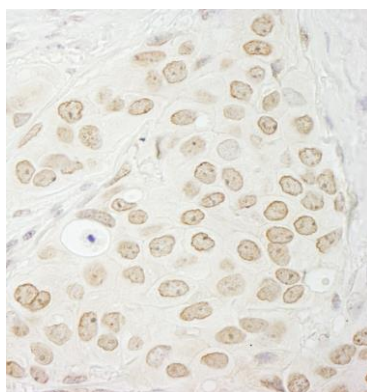


Detection of human PPP1CC by western blot and immunoprecipitation. *Samples:* Whole cell lysate (50, 15 and 5 µg for WB; 1 mg for IP, 20% of IP loaded) from HeLa cells. *Antibodies:* Affinity purified rabbit anti-PPP1CC antibody A300-906A used for WB at 0.1 µg/ml (A) and 1 µg/ml (B) and used for IP at 3 µg/mg lysate (B). PPP1CB was immunoprecipitated by rabbit anti-PPP1CB antibody A300-905A. *Detection:* Chemiluminescence with exposure times of 3 minutes (A) and 30 seconds (B).



Detection of human PPP1CC by immunohistochemistry. *Sample:* FFPE section of human breast carcinoma. *Antibody:* Affinity purified rabbit anti- PPP1CC (Cat. No. A300-906A Lot1) used at a dilution of 1:1,000 (1 µg/ml). *Detection:* DAB