

# Pescadillo Antibody

Rabbit Polyclonal

Antigen Affinity Purified

Protein ID NP\_055118.1

Catalog No. A300-902A

GeneID 23481

Lot No. A300-902A-1



<b>APPLICATIONS</b>	IP, IHC
<b>SPECIES REACTIVITY</b>	Human
<b>PRESUMED REACTIVITY</b>	Based on 100% sequence identity, this antibody is predicted to react with Mouse, Rat, Zebrafish, <i>X. laevis</i> and <i>X. tropicalis</i>
<b>AMOUNT</b>	100 $\mu$ l
<b>CONCENTRATION</b>	1000 $\mu$ g/ml
<b>STORAGE/SHELF LIFE</b>	2 - 8° C / 1 year from date of receipt
<b>PHYSICAL STATE</b>	Liquid
<b>BUFFER</b>	Tris-citrate/phosphate buffer, pH 7 to 8 containing 0.09% Sodium Azide
<b>ISOTYPE</b>	IgG
<b>ORIGIN</b>	USA
<b>PRODUCTION PROCEDURES</b>	Antibody was affinity purified using an epitope specific to Pescadillo immobilized on solid support.

The epitope recognized by A300-902A maps to a region between residue 25 and 75 of human Pescadillo using the numbering given in entry NP\_055118.1 (GeneID 23481).

Immunoglobulin concentration was determined by extinction coefficient: absorbance at 280 nm of 1.4 equals 1.0 mg of IgG.

**APPLICATIONS** Centrifuge tube to remove product from lid. Optimal working dilutions should be determined experimentally by the investigator. Prepare working dilution immediately before use.

Western Blot Not recommended. Use rabbit anti-Pescadillo antibody A300-903A.

Immunoprecipitation 2 - 5  $\mu$ g/mg lysate

Immunohistochemistry 1:1,000 - 1:5,000. Epitope retrieval with citrate buffer pH 6.0 is recommended for FFPE tissue sections.

**APPLICATION NOTES** Western blot of immunoprecipitates performed using Normal Pig Serum (Cat. No. S100-020), Goat anti-Rabbit Light Chain HRP Conjugate (Cat. No. A120-113P) and 4-20% SDS-PAGE (link to IP-western blot protocol in Additional Info section below).

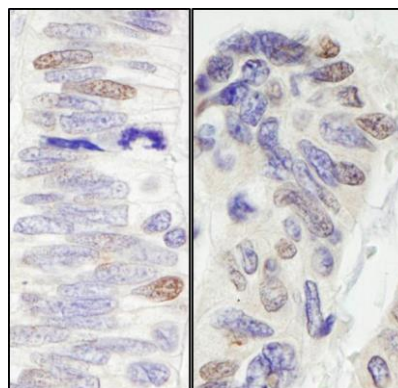
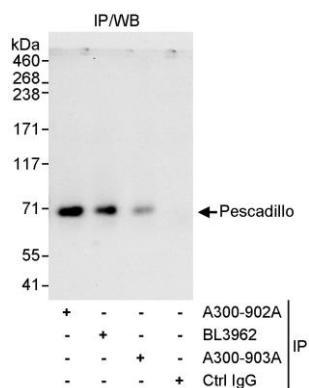
**IHC HUMAN CONTROLS** Colon Carcinoma, Metastatic Lymph Node, Ovarian Carcinoma

**ADDITIONAL INFO** <https://www.bethyl.com/product/A300-902A>

Use the link above to view SDS, a current list of citations, and other product specific information.

IP-western blot protocol: [https://www.bethyl.com/content/protocol\\_IP\\_WB](https://www.bethyl.com/content/protocol_IP_WB)

This document certifies that this product has met all of the quality control standards defined by Bethyl Laboratories, Inc.  
Eric McIntush, PhD | Chief Scientific Officer Date: June 21, 2019



**Detection of human Pescadillo by western blot of immunoprecipitates.** *Samples:* Whole cell lysate (1 mg for IP, 20% of IP loaded) from HeLa cells. *Antibodies:* Affinity purified rabbit anti-Pescadillo antibody A300-902A used for IP at 3 µg/mg lysate. Pescadillo was also immunoprecipitated by rabbit anti-Pescadillo antibodies A300-903A and BL3962, which recognize downstream epitopes. For blotting immunoprecipitated Pescadillo, A300-903A was used at 1 µg/ml. *Detection:* Chemiluminescence with an exposure time of 30 seconds.

**Detection of human Pescadillo by immunohistochemistry.** *Sample:* FFPE sections of human colon carcinoma (left) and ovarian carcinoma (right). *Antibody:* Affinity purified rabbit anti-Pescadillo (Cat. No. A300-902A Lot1) used at a dilution of 1:1,000 (1 µg/ml). *Detection:* DAB