

# USP28 Antibody

Rabbit Polyclonal

Antigen Affinity Purified

Protein ID NP\_065937.1

Catalog No. A300-898A

GeneID 57646

Lot No. A300-898A-2



**APPLICATIONS** WB, IP, IHC

**SPECIES REACTIVITY** Human

**AMOUNT** 100 µl

**CONCENTRATION** 200 µg/ml

**STORAGE/SHELF LIFE** 2 – 8° C / 1 year from date of receipt

**PHYSICAL STATE** Liquid

**BUFFER** Tris-buffered Saline containing 0.1% BSA and 0.09% Sodium Azide

**ISOTYPE** IgG

**ORIGIN** USA

**PRODUCTION PROCEDURES** Antibody was affinity purified using an epitope specific to USP28 immobilized on solid support.

The epitope recognized by A300-898A maps to a region between residue 50 and 100 of human Ubiquitin Specific Peptidase 28 using the numbering given in entry NP\_065937.1 (GeneID 57646).

Immunoglobulin concentration was determined by extinction coefficient: absorbance at 280 nm of 1.4 equals 1.0 mg of IgG.

**APPLICATIONS** Centrifuge tube to remove product from lid. Optimal working dilutions should be determined experimentally by the investigator. Prepare working dilution immediately before use.

Western Blot 1:2,000 – 1:10,000

Immunoprecipitation 2 – 10 µg/mg lysate

Immunohistochemistry 1:500 to 1:2,000. Epitope retrieval with citrate buffer pH6.0 is recommended for FFPE tissue sections.

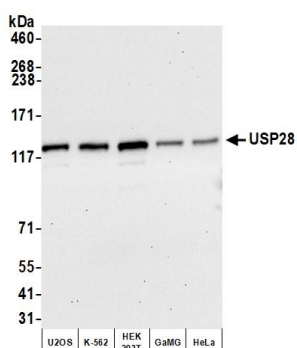
**IHC HUMAN CONTROLS** Breast Carcinoma, Colon Carcinoma, Ovarian Carcinoma, Small Cell Lung Cancer, Stomach Adenocarcinoma

**ADDITIONAL INFO** <https://www.bethyl.com/product/A300-898A>

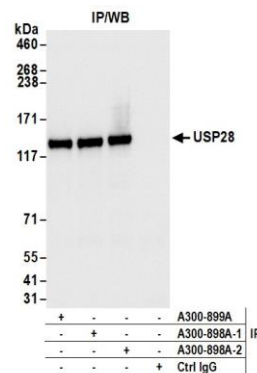
Use the link above to view SDS, a current list of citations, and other product specific information.

IP-western blot protocol: [https://www.bethyl.com/content/protocol\\_IP\\_WB](https://www.bethyl.com/content/protocol_IP_WB)

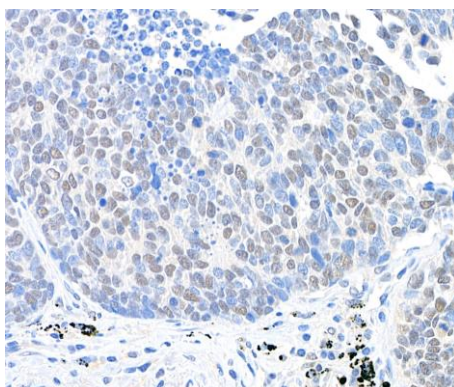
This document certifies that this product has met all of the quality control standards defined by Bethyl Laboratories, Inc.  
Eric McIntush, PhD | Chief Scientific Officer Date: July 2, 2020



**Detection of human USP28 by western blot.** *Samples:* Whole cell lysate (5 µg) from U2OS, K-562, HEK293T, GaMG, and HeLa cells prepared using NETN lysis buffer. *Antibody:* Affinity purified rabbit anti-USP28 antibody A300-898A (lot A300-898A-2) used for WB at 0.04 µg/ml. *Detection:* Chemiluminescence with an exposure time of 30 seconds.



**Detection of human USP28 by western blot of immunoprecipitates.** *Samples:* Whole cell lysate (1.0 mg per IP reaction; 20% of IP loaded) from HeLa cells prepared using NETN lysis buffer. *Antibodies:* Affinity purified rabbit anti-USP28 antibody A300-898A (lot A300-898A-2) used for IP at 6 µg per reaction. USP28 was also immunoprecipitated by a previous lot of this antibody (lot A300-898A) and rabbit anti-USP28 antibody A300-899A. For blotting immunoprecipitated USP28, A300-898A was used at 0.04 µg/ml. *Detection:* Chemiluminescence with an exposure time of 30 seconds.



**Detection of human USP28 by immunohistochemistry.** *Sample:* FFPE section of human lung carcinoma. *Antibody:* Affinity purified rabbit anti-USP28 (A300-898A Lot 2) used at a dilution of 1:1,000 (0.2µg/ml). *Detection:* DAB