

JARID1A/RBP2 Antibody

Rabbit Polyclonal

Antigen Affinity Purified

Protein ID NP_005047.1

Catalog No. A300-897A

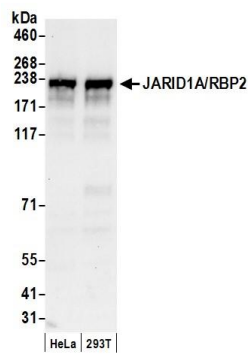
GeneID 5927

Lot No. A300-897A-3

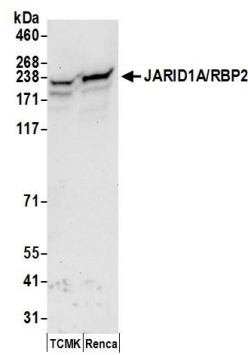


APPLICATIONS	WB, IP
SPECIES REACTIVITY	Human, Mouse
AMOUNT	100 µl
CONCENTRATION	200 µg/ml
STORAGE/SHELF LIFE	2 – 8° C / 1 year from date of receipt
PHYSICAL STATE	Liquid
BUFFER	Tris-buffered Saline containing 0.1% BSA and 0.09% Sodium Azide
ISOTYPE	IgG
ORIGIN	USA
PRODUCTION PROCEDURES	<p>Antibody was affinity purified using an epitope specific to JARID1A/RBP2 immobilized on solid support.</p> <p>The epitope recognized by A300-897A maps to a region between residue 1640 and 1690 of human Jumonji/ARID Domain-Containing Protein 1A/Retinoblastoma Binding Protein 2 Homolog 1 using the numbering given in entry NP_001036068.1 (GeneID 5927).</p> <p>Immunoglobulin concentration was determined by extinction coefficient: absorbance at 280 nm of 1.4 equals 1.0 mg of IgG.</p>
APPLICATIONS	<p>Centrifuge tube to remove product from lid. Optimal working dilutions should be determined experimentally by the investigator. Prepare working dilution immediately before use.</p> <p>Western Blot 1:2,000 – 1:10,000</p> <p>Immunoprecipitation 2 – 10 µg/mg lysate</p>
APPLICATION NOTES	<p>Western blot of immunoprecipitates performed using Normal Pig Serum (Cat. No. S100-020), Goat anti-Rabbit Light Chain HRP Conjugate (Cat. No. A120-113P) and 4-8% SDS-PAGE (link to IP-western blot protocol in Additional Info section below).</p> <p>Western blot of lysates performed using standard western blot reagents and 4-8% SDS-PAGE.</p>
ADDITIONAL INFO	<p>https://www.bethyl.com/product/A300-897A</p> <p>Use the link above to view SDS, a current list of citations, and other product specific information.</p> <p>IP-western blot protocol: https://www.bethyl.com/content/protocol_IP_WB</p>

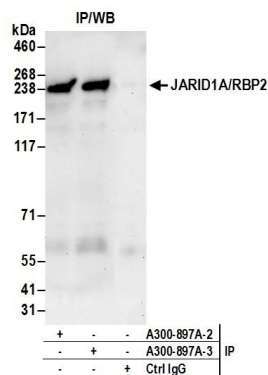
This document certifies that this product has met all of the quality control standards defined by Bethyl Laboratories, Inc.
Eric McIntush, PhD | Chief Scientific Officer Date: June 21, 2019



Detection of human JARID1A/RBP2 by western blot.
Samples: Whole cell lysate (50 µg) from HeLa and HEK293T cells prepared using NETN lysis buffer. *Antibody:* Affinity purified rabbit anti-JARID1A/RBP2 antibody A300-897A (lot A300-897A-3) used for WB at 0.1 µg/ml. *Detection:* Chemiluminescence with an exposure time of 30 seconds.



Detection of mouse JARID1A/RBP2 by western blot.
Samples: Whole cell lysate (50 µg) from TCMK-1 and Renca cells prepared using NETN lysis buffer. *Antibody:* Affinity purified rabbit anti-JARID1A/RBP2 antibody A300-897A (lot A300-897A-3) used for WB at 0.1 µg/ml. *Detection:* Chemiluminescence with an exposure time of 30 seconds.



Detection of human JARID1A/RBP2 by western blot of immunoprecipitates. *Samples:* Whole cell lysate (0.5 or 1.0 mg per IP reaction; 20% of IP loaded) from HeLa cells prepared using NETN lysis buffer. *Antibodies:* Affinity purified rabbit anti-JARID1A/RBP2 antibody A300-897A (lot A300-897A-3) used for IP at 6 µg per reaction. JARID1A/RBP2 was also immunoprecipitated by a previous lot of this antibody (lot A300-897A-2). For blotting immunoprecipitated JARID1A/RBP2, A300-897A was used at 1 µg/ml. *Detection:* Chemiluminescence with an exposure time of 30 seconds.