

COP1 /RFWD2 Antibody

Rabbit Polyclonal

Antigen Affinity Purified

Protein ID NP_071902.2

Catalog No. A300-895A

GeneID 64326

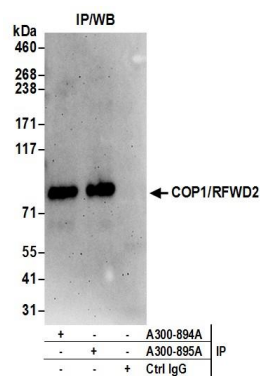
Lot No. A300-895A-2



APPLICATIONS	IP				
SPECIES REACTIVITY	Human				
AMOUNT	100 µl				
CONCENTRATION	1000 µg/ml				
STORAGE/SHELF LIFE	2 – 8° C / 1 year from date of receipt				
PHYSICAL STATE	Liquid				
BUFFER	Tris-citrate/phosphate buffer, pH 7 to 8 containing 0.09% Sodium Azide				
ISOTYPE	IgG				
ORIGIN	USA				
PRODUCTION PROCEDURES	<p>Antibody was affinity purified using an epitope specific to COP1 /RFWD2 immobilized on solid support.</p> <p>The epitope recognized by A300-895A maps to a region between residue 100 and 150 of human Constitutive Photomorphogenic Protein-1 /Ring Finger and WD Repeat Domain 2 using the numbering given in entry NP_071902.2 (GeneID 64326).</p> <p>Immunoglobulin concentration was determined by extinction coefficient: absorbance at 280 nm of 1.4 equals 1.0 mg of IgG.</p>				
APPLICATIONS	<p>Centrifuge tube to remove product from lid. Optimal working dilutions should be determined experimentally by the investigator. Prepare working dilution immediately before use.</p> <table><tr><td>Western Blot</td><td>Not recommended. Use rabbit anti-COP1 /RFWD2 antibody A300-894A.</td></tr><tr><td>Immunoprecipitation</td><td>2 – 10 µg/mg lysate</td></tr></table>	Western Blot	Not recommended. Use rabbit anti-COP1 /RFWD2 antibody A300-894A.	Immunoprecipitation	2 – 10 µg/mg lysate
Western Blot	Not recommended. Use rabbit anti-COP1 /RFWD2 antibody A300-894A.				
Immunoprecipitation	2 – 10 µg/mg lysate				
APPLICATION NOTES	Western blot of immunoprecipitates performed using Normal Pig Serum (Cat. No. S100-020), Goat anti-Rabbit Light Chain HRP Conjugate (Cat. No. A120-113P) and 4-8% SDS-PAGE (link to IP-western blot protocol in Additional Info section below).				
ADDITIONAL INFO	<p>https://www.bethyl.com/product/A300-895A</p> <p>Use the link above to view SDS, a current list of citations, and other product specific information.</p> <p>IP-western blot protocol: https://www.bethyl.com/content/protocol_IP_WB</p>				

This document certifies that this product has met all of the quality control standards defined by Bethyl Laboratories, Inc.
Eric McIntush, PhD | Chief Scientific Officer

Date: June 21, 2019



Detection of human COP1/RFWD2 by western blot of immunoprecipitates. *Samples:* Whole cell lysate (0.5 or 1.0 mg per IP reaction; 20% of IP loaded) from HeLa cells prepared using NETN lysis buffer. *Antibodies:* Affinity purified rabbit anti-COP1/RFWD2 antibody A300-895A (lot A300-895A-2) used for IP at 6 µg per reaction. COP1/RFWD2 was also immunoprecipitated by rabbit anti-COP1/RFWD2 antibody A300-894A. For blotting immunoprecipitated COP1/RFWD2, A300-894A was used at 1 µg/ml. *Detection:* Chemiluminescence with an exposure time of 3 minutes.