

# PPM1B Antibody

Rabbit Polyclonal

Antigen Affinity Purified

Protein ID NP\_002697.1

Catalog No. A300-887A

GeneID 5495

Lot No. A300-887A-2



<b>APPLICATIONS</b>	WB, IP
<b>SPECIES REACTIVITY</b>	Human
<b>AMOUNT</b>	100 µl
<b>CONCENTRATION</b>	200 µg/ml
<b>STORAGE/SHELF LIFE</b>	2 – 8° C / 1 year from date of receipt
<b>PHYSICAL STATE</b>	Liquid
<b>BUFFER</b>	Tris-buffered Saline containing 0.1% BSA and 0.09% Sodium Azide
<b>ISOTYPE</b>	IgG
<b>ORIGIN</b>	USA
<b>PRODUCTION PROCEDURES</b>	Antibody was affinity purified using an epitope specific to PPM1B immobilized on solid support.

The epitope recognized by A300-887A maps to a region between residue 450 and the C-terminus (residue 479) of human Protein Phosphatase 1B, Magnesium-Dependent, Beta Isoform using the numbering given in entry NP\_002697.1 (GeneID 5495).

Immunoglobulin concentration was determined by extinction coefficient: absorbance at 280 nm of 1.4 equals 1.0 mg of IgG.

**APPLICATIONS** Centrifuge tube to remove product from lid. Optimal working dilutions should be determined experimentally by the investigator. Prepare working dilution immediately before use.

Western Blot 1:2,000 – 1:10,000

Immunoprecipitation 2 – 10 µg/mg lysate

**APPLICATION NOTES** Western blot of immunoprecipitates performed using Normal Pig Serum (Cat. No. S100-020), Goat anti-Rabbit Light Chain HRP Conjugate (Cat. No. A120-113P) and 4-20% SDS-PAGE (link to IP-western blot protocol in Additional Info section below).

Western blot of lysates performed using standard western blot reagents and 4-20% SDS-PAGE.

**ADDITIONAL INFO** <https://www.bethyl.com/product/A300-887A>

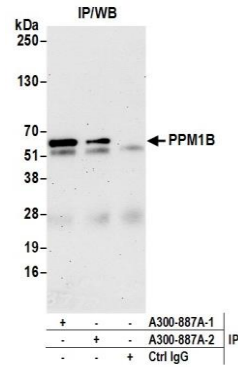
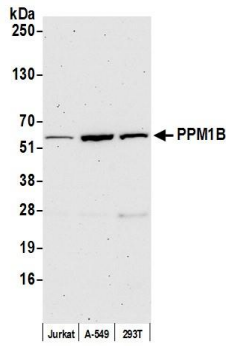
Use the link above to view SDS, a current list of citations, and other product specific information.

IP-western blot protocol [https://www.bethyl.com/content/protocol\\_IP\\_WB](https://www.bethyl.com/content/protocol_IP_WB)

This document certifies that this product has met all of the quality control standards defined by Bethyl Laboratories, Inc.

Eric McIntush, PhD | Chief Scientific Officer

Date: October 1, 2019



**Detection of human PPM1B by western blot.** *Samples:* Whole cell lysate (50 µg) from Jurkat, A-549, and HEK293T cells prepared using NETN lysis buffer. *Antibody:* Affinity purified rabbit anti-PPM1B antibody A300-887A (lot A300-887A-2) used for WB at 0.04 µg/ml. *Detection:* Chemiluminescence with an exposure time of 75 seconds.

**Detection of human PPM1B by western blot of immunoprecipitates.** *Samples:* Whole cell lysate (1.0 mg per IP reaction; 20% of IP loaded) from Jurkat cells prepared using NETN lysis buffer. *Antibodies:* Affinity purified rabbit anti-PPM1B antibody A300-887A (lot A300-887A-2) used for IP at 6 µg per reaction. PPM1B was also immunoprecipitated by a previous lot of this antibody (lot A300-887A-1). For blotting immunoprecipitated PPM1B, A300-887A was used at 0.04 µg/ml. *Detection:* Chemiluminescence with an exposure time of 75 seconds.